

Plotted EA

PLAN No 15419

Deposited in the Land Registry Office at Kamloops on the 1st day of Sept. 1965.

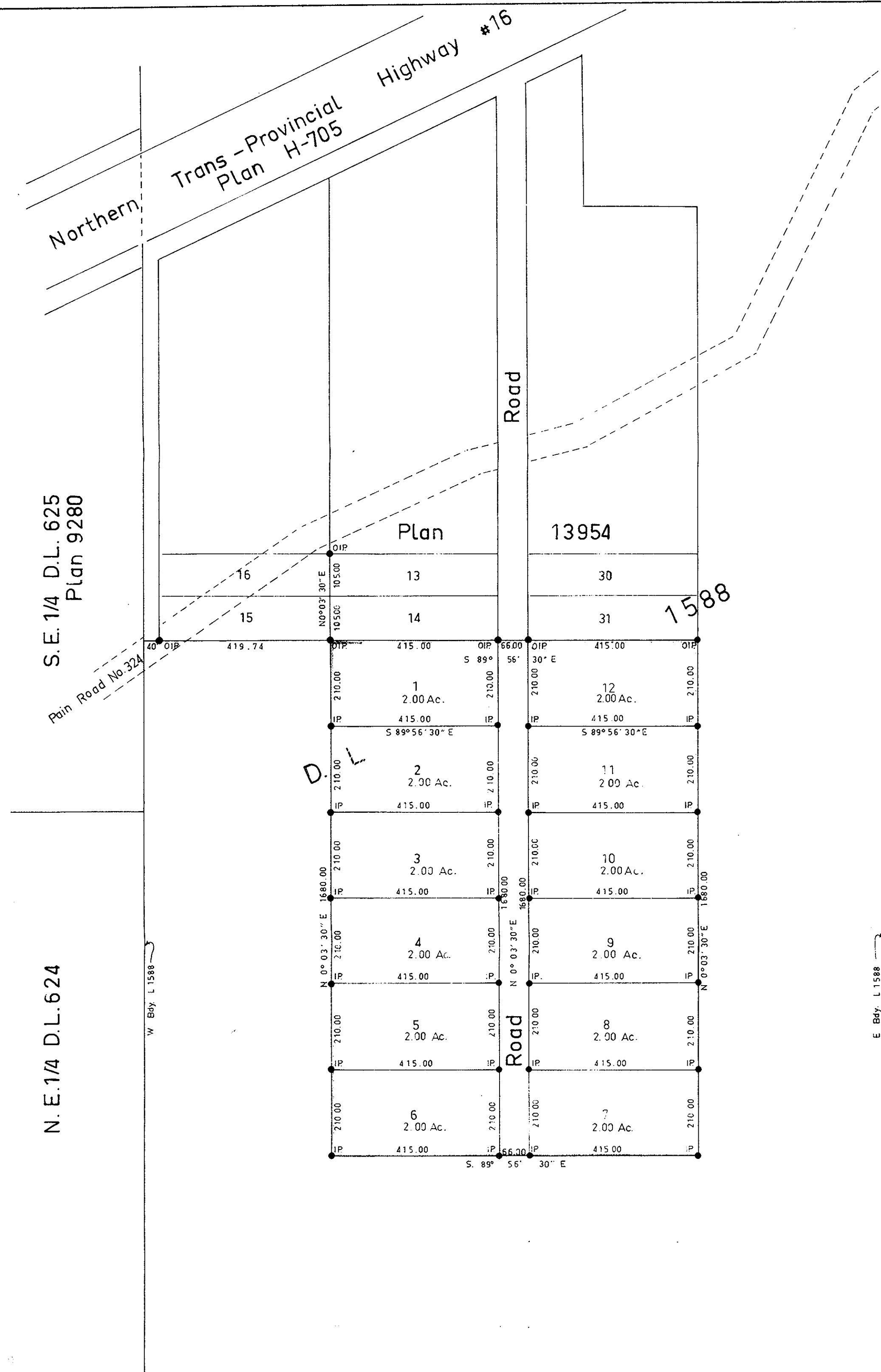
[Signature]
Registrar

Plan of Subdivision of
Part of District Lot 1588 Except
Plan 13954 and Plan H-705
CARIBOO DISTRICT

SCALE 1" = 200'

N.W. 1/4 D.L. 1594

S.W. 1/4 D.L. 1594



Bearings are astronomic and are derived from OIPs found on the South boundary of Plan 13954 shown as S 89° 56' 30" E

- ⊙ P.con. Standard Concrete Post.
- ⊙ P.Rock Standard Rock Post.
- P.P. Standard Pipe Post.
- I.P. Standard Iron Post.
- P. Wooden Post.
- L.P. Lead Plug.
- Denoting "Old"
- WT. Denoting "Witness"

I, R.J. Goble, of the City of Prince George, British Columbia Land Surveyor, make oath and say that I was present at and did personally superintend the survey represented by this plan and that the survey and plan are correct.

The said survey was completed on the 17th day of JUNE 1965.

Sworn before me at PRINCE GEORGE this 17th day of JUNE 1965.

Approved under the Land Registry Act on the 27th day of July 1965.

[Signature]
A Commissioner for taking affidavits within British Columbia.
Thora Kristine Jensen
Department of Highways Prince George
Owner *[Signature]*

Witness *[Signature]*