

~~NON-METRIC BASE MAP~~  
(DA)

PLAN No 15340

Deposited in the Land Registry  
Office at Kamloops, B.C. this  
29th day of July, 1965.

*[Signature]*  
Registrar

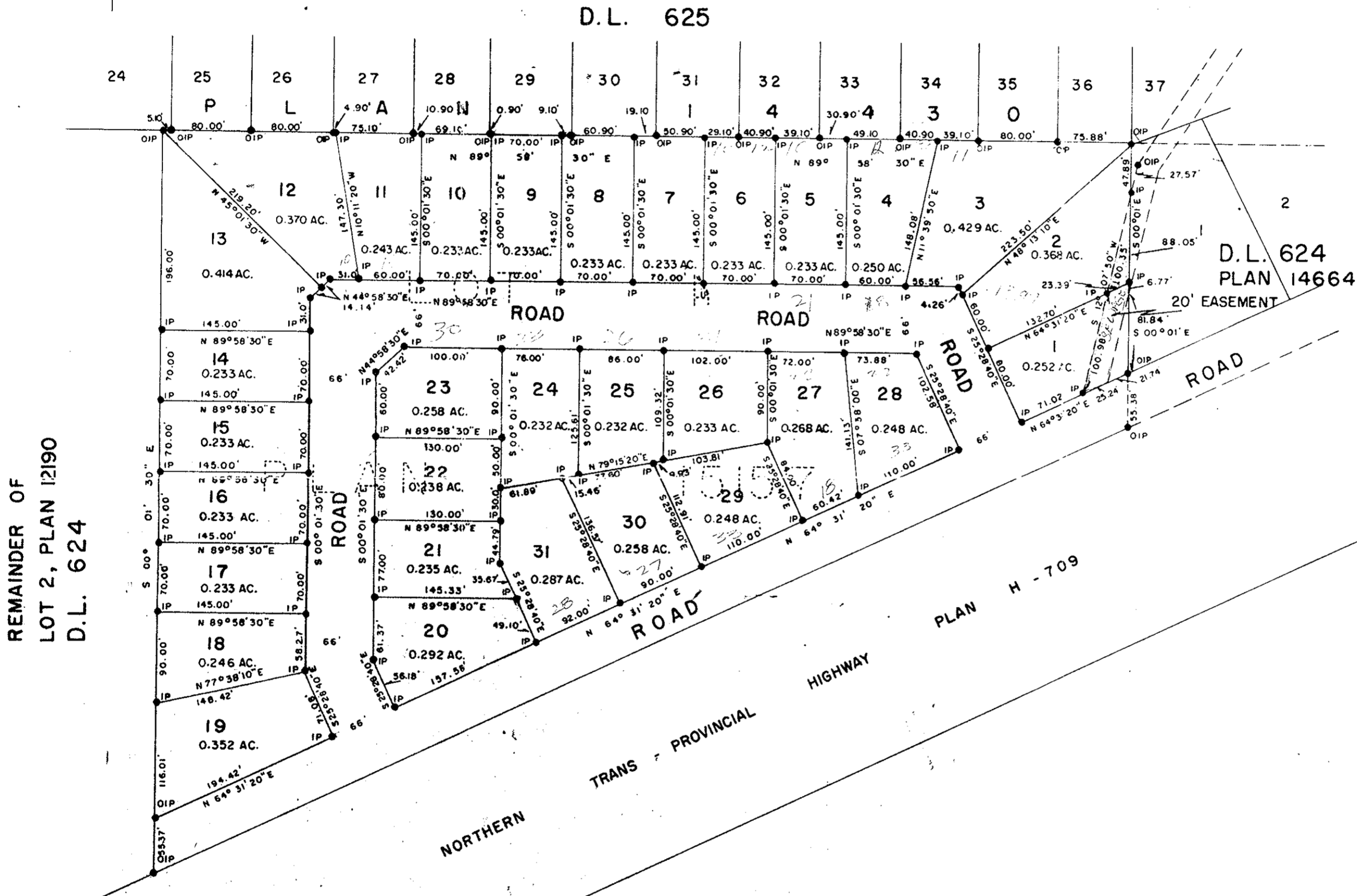
PLAN OF SUBDIVISION OF  
LOT A, PLAN 15157  
DISTRICT LOT 624  
CARIBOO DISTRICT - BRITISH COLUMBIA

SCALE: 1" = 100'

NOTE: Bearings are astronomic, derived from the North  
boundary of D.L. 624, Plan 14430.

LEGEND: ● OIP denotes an old iron pin found.  
● IP denotes an iron pin placed on this survey.

Easement for sewerage purposes is shown outlined in green



I, DONALD A. DUFFY of the City of Prince George, a  
British Columbia Land Surveyor, make oath and say that  
I was present at and did personally supervise the survey  
represented by this plan and that the survey and plan are  
correct. The said survey was completed on the 23rd day  
of June, 1965.

*[Signature of Donald A. Duffy]*

Sworn before me this 25th  
day of July, 1965

Prince George Developments Ltd.

*[Signature: R.A. Nelson]* Director

*[Signature: Bruce D. Macdonald]* Director

Mortgages  
*[Signature: MERVIN ENTERTAINERS LTD]*  
*[Signature: Bruce D. Macdonald]*  
M&S

Approved under the Land Registry Act  
this 23rd day of July, 1965.

*[Signature]*  
Approving Officer, Dept. of Highways.

W.D. USHER & ASSOCIATES  
LAND SURVEYORS  
PRINCE GEORGE, B.C.  
AR 1.2 1578