

PLAN OF SUBDIVISION OF
 LOTS 1 to 7 INCLUSIVE and LOTS 14 to 20 INCLUSIVE,
 BLOCK 201 and LOTS 1 to 7 INCLUSIVE BLOCK 210,
 PLAN 1268, DISTRICT LOT 343,
 CARIBOO DISTRICT.

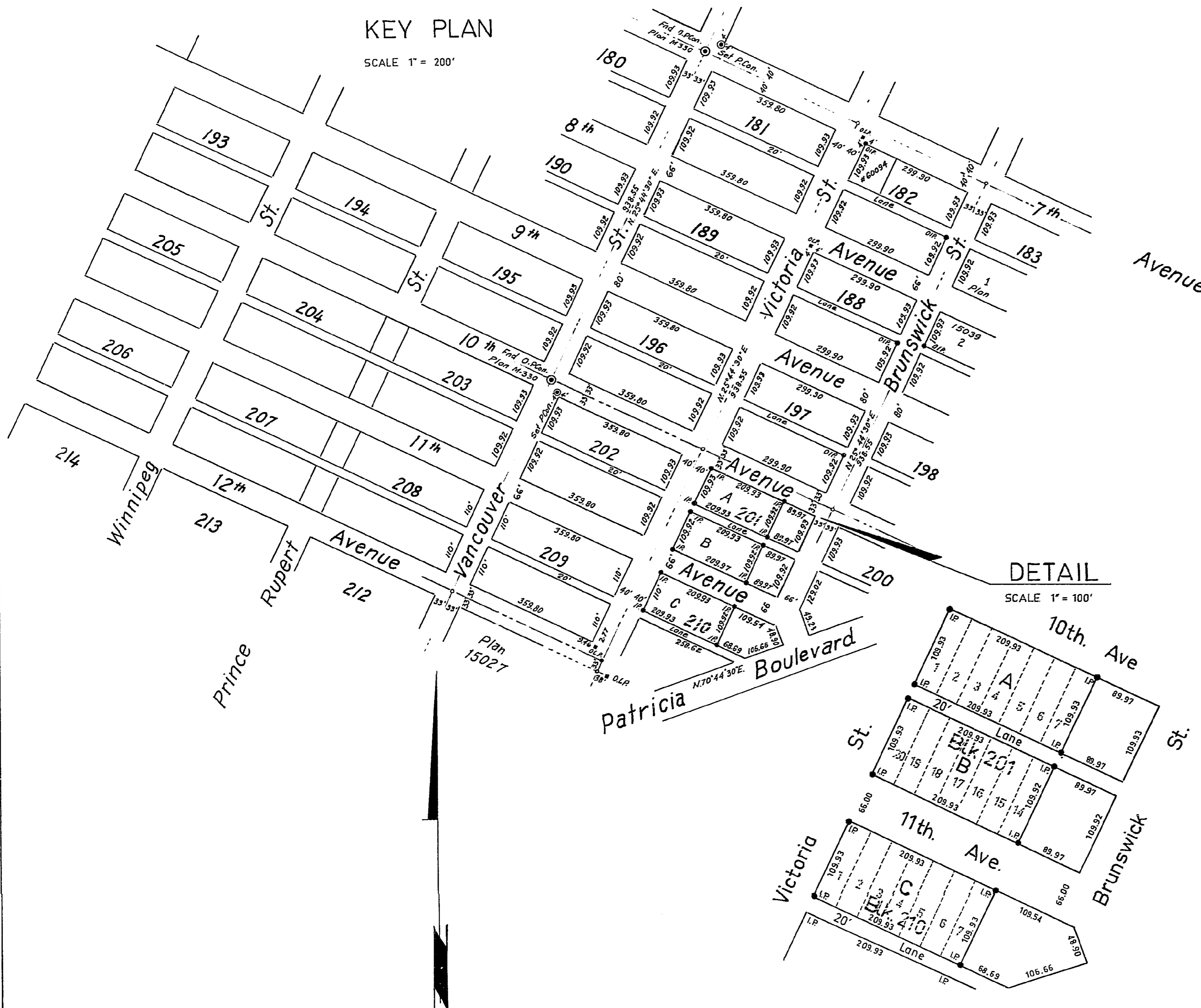
PLAN No 15319

Deposited in the Land Registry Office
 at Kamloops on the 22nd day of June 1965.

[Signature]
 Registrar.

KEY PLAN

SCALE 1" = 200'



DETAIL

SCALE 1" = 100'

- Bearings are astronomic and are derived from Old concrete monuments & of Victoria Street shown on Plan M-330 as N25°44'30"E
- ⊙ Rcon. ----- Standard Concrete Post.
 - ⊙ P.Rock ----- Standard Rock Post.
 - ⊙ P.P. ----- Standard Pipe Post.
 - L.P. ----- Standard Iron Post.
 - P. ----- Wooden Post.
 - L.P. ----- Lead Plug.
 - ----- Denoting "Old"
 - WT. ----- Denoting "Witness".

Approved under the Land Registry Act on the 15 day of June 1965

[Signature]
 Approving Officer
 City of Prince George B.C.

I, R.J. Goble... of the City of Prince George British Columbia Land Surveyor, make oath and say that I was present at and did personally superintend the survey represented by this plan and that the survey and plan are correct. The said survey was completed on the 22nd day of June 1965.

Sworn before me at PRINCE GEORGE B.C. this 3 day of JUNE 1965.

[Signature]
 A Commissioner for taking affidavits within British Columbia.

Owner, Elizabeth Doreen Shields
 Charles Meyer Shires.

Witness *[Signature]*
 AS TO BOTH SIGNATURES