

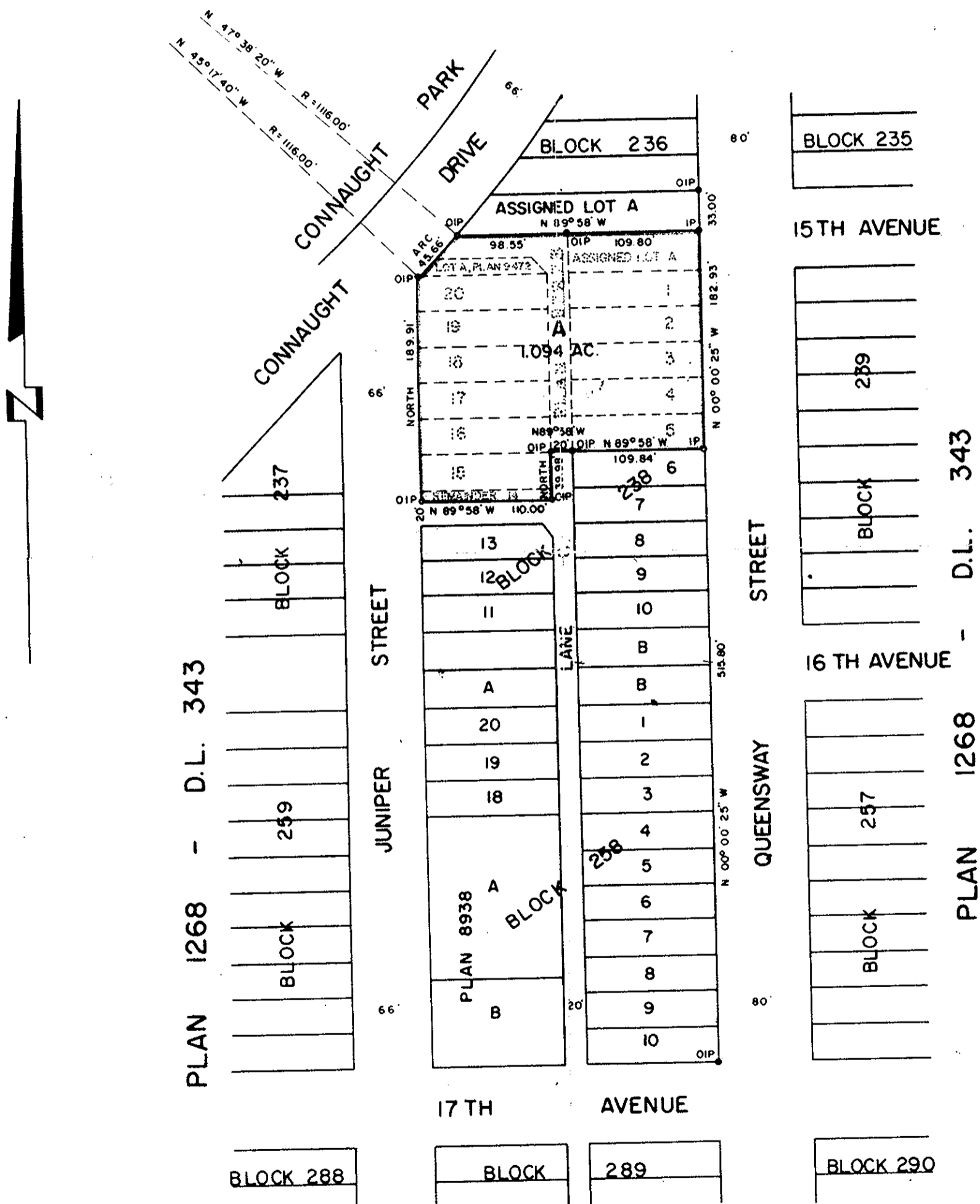
PLAN OF SUBDIVISION OF
 LOTS 1 TO 5 INCLUSIVE, REMAINDER OF LOT 14,
 LOTS 15 TO 20 INCLUSIVE, & ASSIGNED LOT A,
 BLOCK 238, PLAN 1268, LOT A, PLAN 9472,
 AND PLAN B7873
DISTRICT LOT 343
 CARIBOO DISTRICT - BRITISH COLUMBIA
 SCALE: 1" = 100'

PLAN No. **15252**
 Deposited in the Land Registry
 Office at Kamloops, B.C. this
 28 day of June, 1965.

Chapman
 Registrar

NOTE: Bearings are astronomic, derived from the west
 boundary of Block 238, Plan 1268.

LEGEND: ● OIP denotes an old iron pin found.
 ● IP denotes an iron pin placed on this survey.



I, DONALD A. DUFFY of the City of Prince George, a
 British Columbia Land Surveyor, make oath and say
 that I was present at and did personally superintend
 the survey represented by this plan and that the survey
 and plan are correct. The said survey was completed
 on the 14th day of October, 1964.

Donald A. Duffy
 B.C.L.S.

METRO PROPERTIES LTD.

John W. Bennett
 Vice-President
Robert A. Bennett
 Treasurer

Approved under the Land Registry Act
 this 4 day of May, 1965.

C. Currier
 Approving Officer, City of Prince George.

Sworn before me this
 3rd day of May, 1965.