

PLAN NO 15238

Deposited in the Land Registry  
Office at Kamloops, BC  
this 21<sup>st</sup> day of JUNE, 1966.

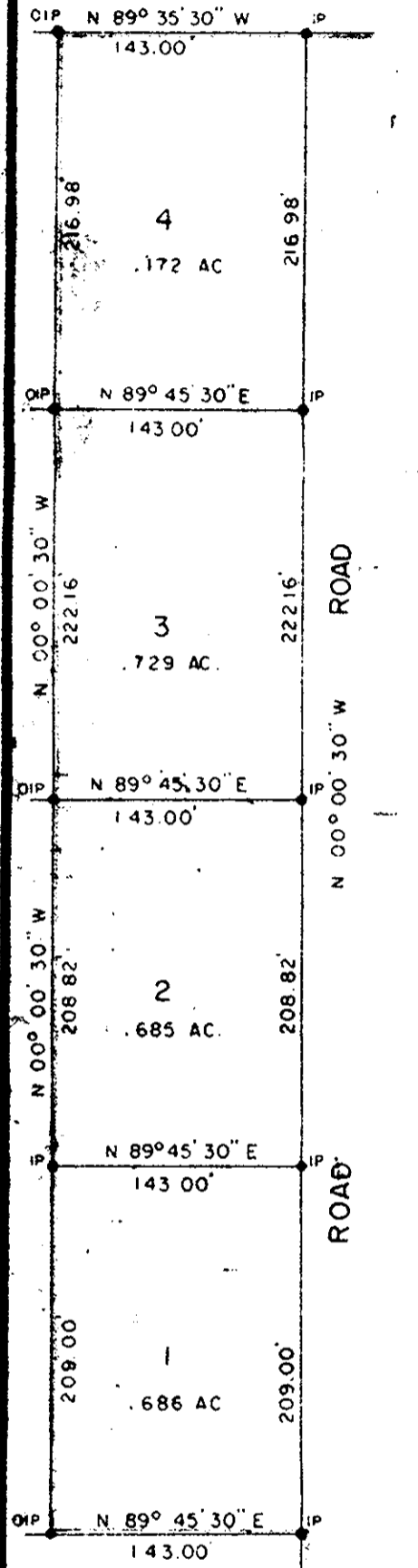
*W.D. Usher*  
Registrar

PLAN OF SUBDIVISION OF PART OF  
LOT 7 - PLAN 9298 & PART OF  
S. 1/2 OF S.W. 1/4 LOT 633  
EXCEPT PLANS 9298, 9397, 11162 & 12216  
CARIBOO DISTRICT - BRITISH COLUMBIA

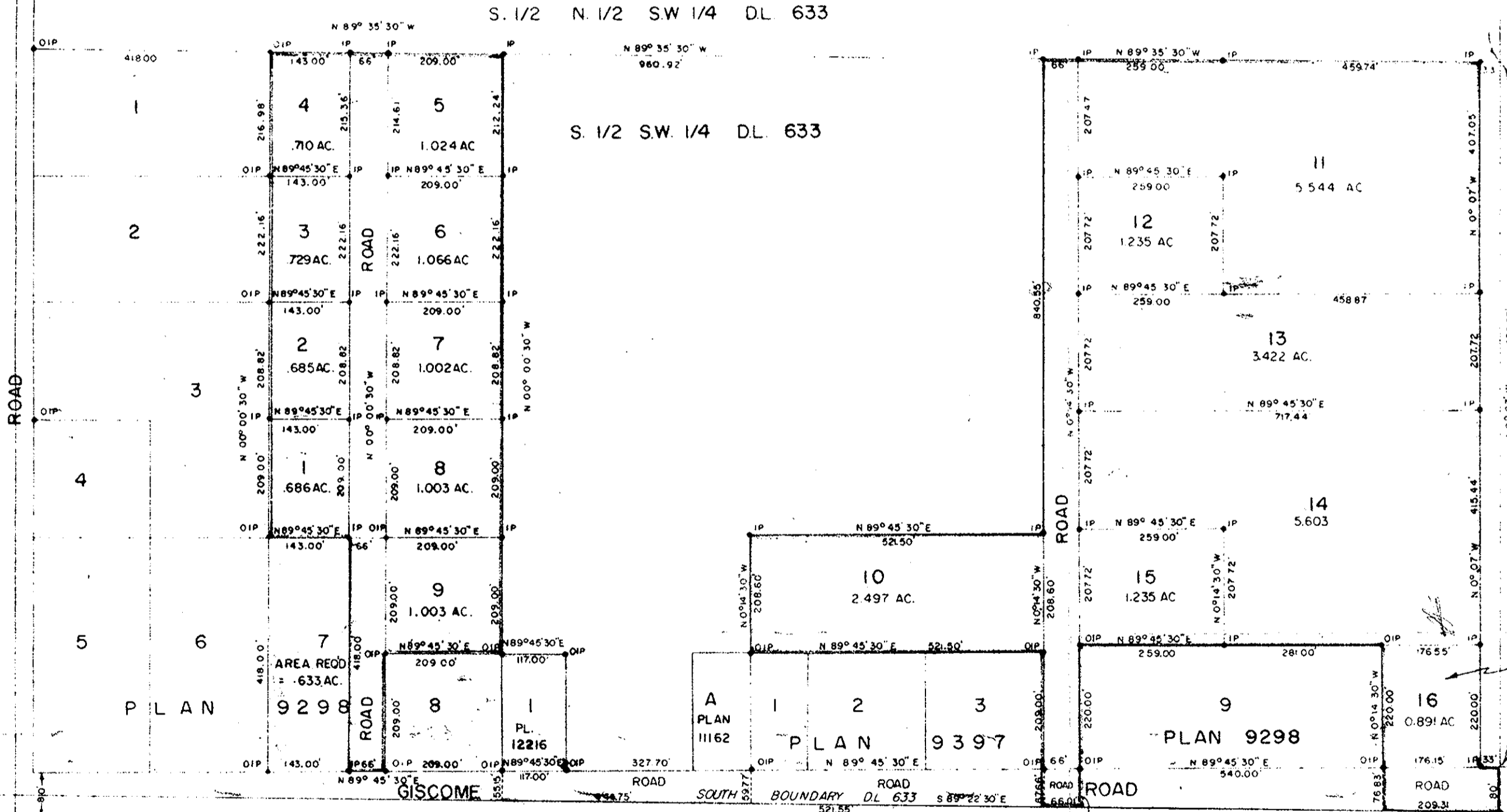
SCALE: 1" = 200'

NOTE Bearings are astronomic, derived from the  
South Boundary of Lots 1, 2, & 3, Plan 9397

LEGEND ● OIP denotes an old iron pin found  
● IP denotes an iron pin placed on this survey  
● OPP denotes an old pipe post found.



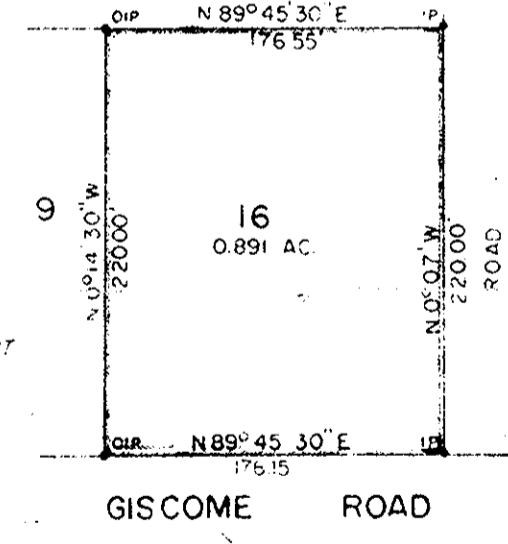
INSERT  
SCALE: 1" = 100'



S.W. 1/4 DL 957  
NW 1/4 DL 633

SE 1/4 DL 957  
NE 1/4 DL 633

INSERT  
SCALE: 1" = 100'



I, DONALD A. DUFFY, of the City of Prince George,  
a British Columbia Land Surveyor make oath and say  
that I was present at and did personally superintend  
the survey represented by this plan and the survey and  
plan are correct. The said survey was completed on  
the 20<sup>th</sup> day of OCTOBER, 1960.

Sworn before me  
this 26<sup>th</sup> day of NOVEMBER, 1960. *Da Off*  
BCLS

*James*  
A Commissioner for taking Affidavits  
within the Province of British Columbia

Approved under the Land Registry Act  
this 24<sup>th</sup> day of August, 1964.

*Herb*  
Approving Officer, Dept. of Highways.

Reapproved under the Land Registry Act  
this 22<sup>nd</sup> day of May, 1965.

*Herb*  
Approving Officer, Dept. of Highways.

*Emmell Butcher*  
Owner

*Ed Licer*  
Witness

Owner

Witness

INSPECTED  
December 3rd, 1962

*W.D. Usher*  
W.D. Usher, B.C.L.S.