

7214-100

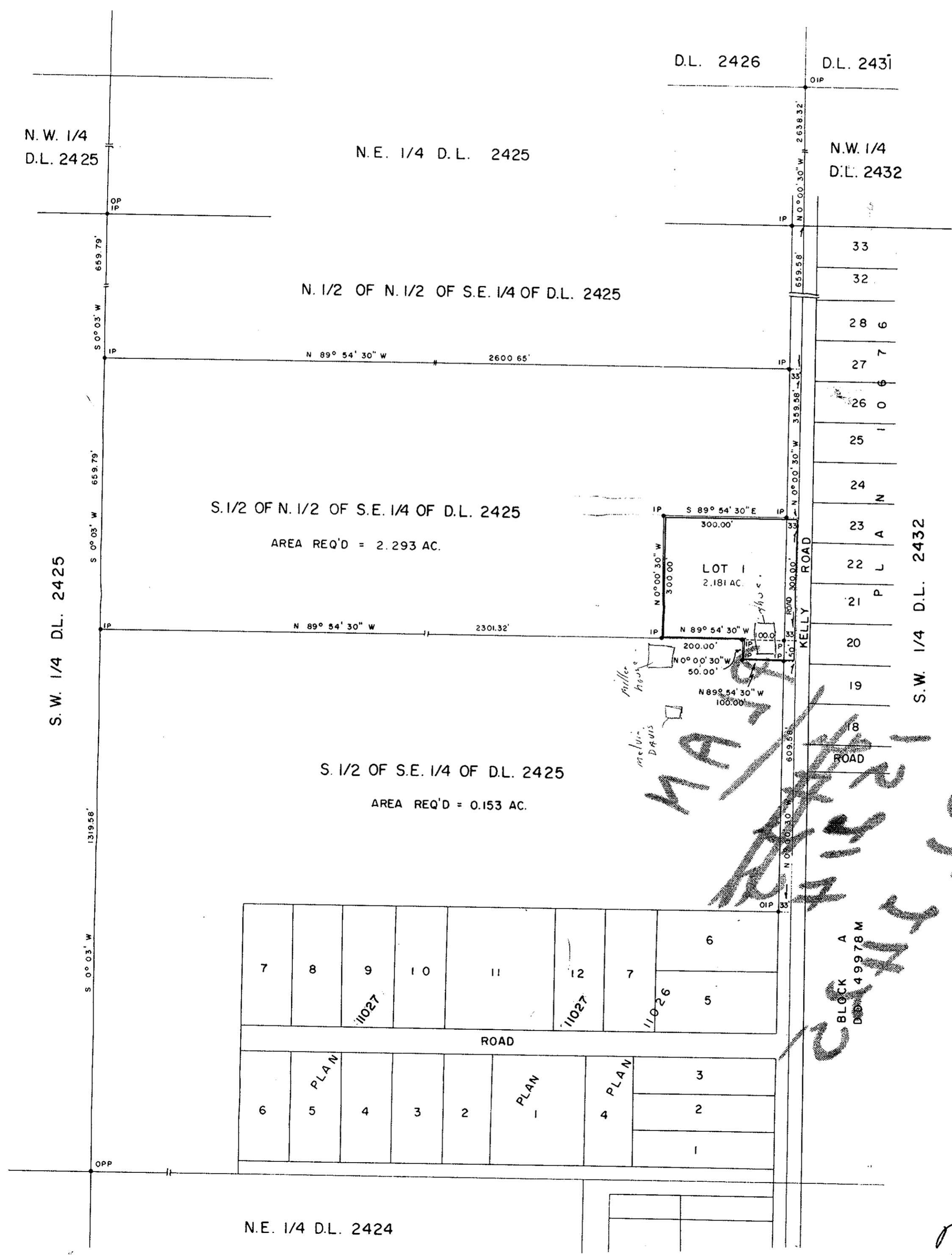
7342

731

PLAN No **15214**
 Deposited in the Land Registry
 Office at Kamloops, B.C. this
 10th day of JUNE, 1963.
CHAS. J. S. FARRAD
 Registrar

PLAN OF SUBDIVISION OF PARTS OF
 S. 1/2 OF N. 1/2 OF S.E. 1/4 &
 S. 1/2 OF S.E. 1/4 OF
DISTRICT LOT 2425 EXCEPT PLANS 11026 & 11027
 CARIBOO DISTRICT - BRITISH COLUMBIA
 SCALE: 1" = 200'

NOTE: Bearings are astronomic, derived from
 the East Boundary of the S.E. 1/4 of
 D.L. 2425 as shown on Plan 11026.
 LEGEND: OP denotes an old wooden post found.
 ● OIP denotes an old iron pin found.
 ● IP denotes an iron pin placed on this survey.
 ● OPP denotes an old pipe post found.



BEAVER LUMBER CO. LTD.

VICE-PRESIDENT
Donald A. Duffy
 SECRETARY-TREASURER

I, DONALD A. DUFFY, of the City of Prince George, a British Columbia Land Surveyor, make oath and say that I was present at and did personally superintend the survey represented by this plan and that the survey and plan are correct. The said survey was completed on the 14th day of JULY, 1962.

D. Duffy
 Owner

Approved under the Land Registry Act
 this 11th day of JANUARY, 1963.

John
 Approving Officer, Dept. of Highways.