

PLAN OF SUBDIVISION OF PART OF DISTRICT LOT 1544

CARIBOO DISTRICT *Except plans 0840
7068
14163*

SCALE: 1 INCH = 100 FEET

PLOTTED NJ

PLAN No 15115

Deposited in the Land Registry Office
at Kamloops on the 6th day of May 1965

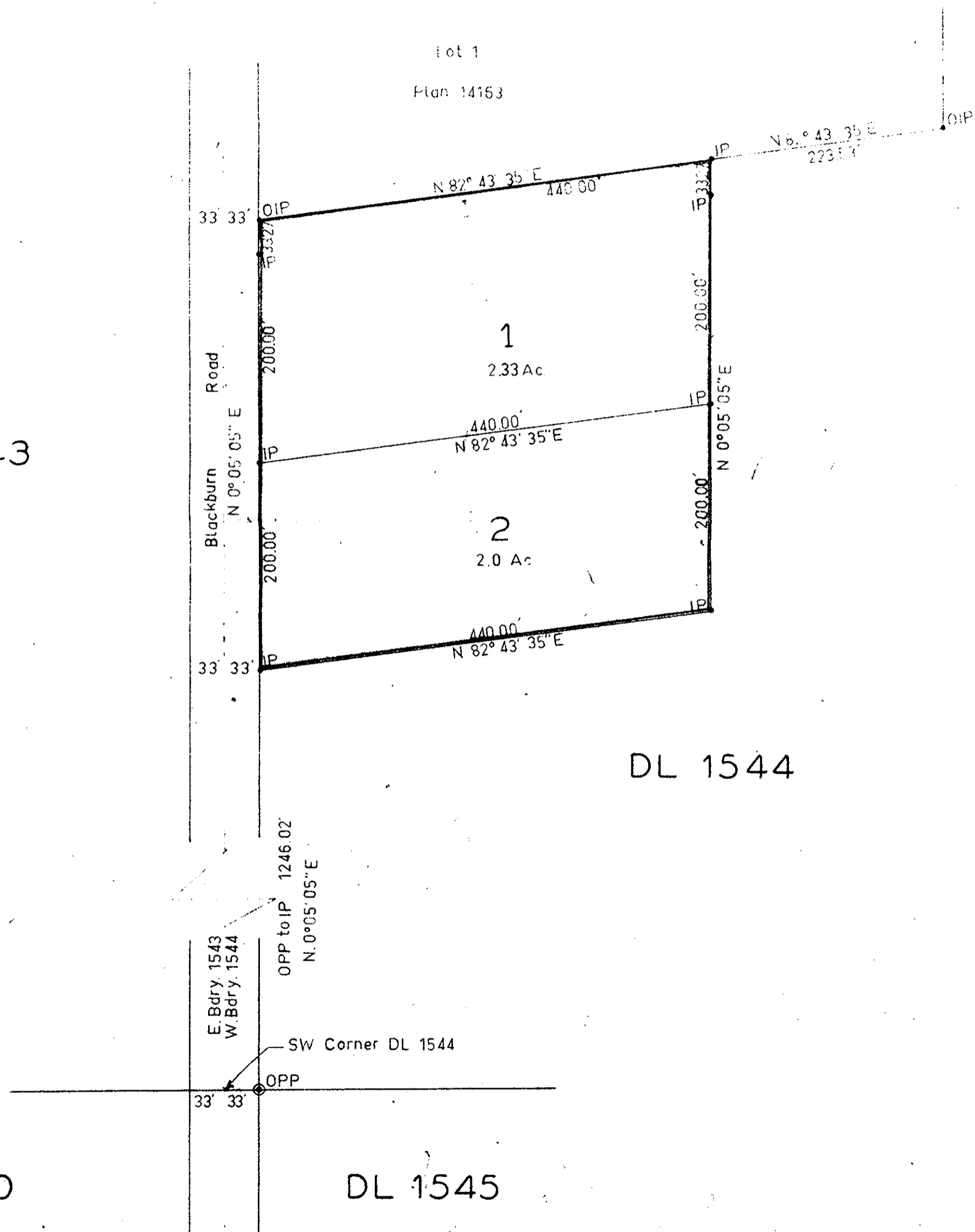
[Signature]
Registrar

DL 1543

DL 1544

DL 630

DL 1545



Bearings are astronomic and are derived from
Plan 14163

- ⊙ P.con. Standard Concrete Post.
- ⊙ P.Rock Standard Rock Post.
- PP Standard Pipe Post.
- I.P. Standard Iron Post.
- P. Wooden Post.
- L.P. Lead Plug.
- Denoting "Old"
- WT. Denoting "Witness"

I, R.J. Goble... of the city of Prince George
British Columbia Land Surveyor, make oath and
say that I was present at and did personally
supervise the survey represented by this
plan and that the survey and plan are correct.
The said survey was completed on
the 31st day of December 1964

Sworn before me at Prince George
this 19th day of January 1965

Approved under the Land Registry Act
on the 12th day of April 1965

[Signature]
Approving Officer
Cpt. of Highways

[Signature]
A Commissioner for taking affidavits
within British Columbia.

Owner *Stephen G. Schlitt
Gilda G. Schlitt*
Witness *E. M. Bryant*