

Deposited in the Land Registry Office at Kamloops, B.C. this 29 day of April 1965

*[Signature]*  
Deputy Registrar

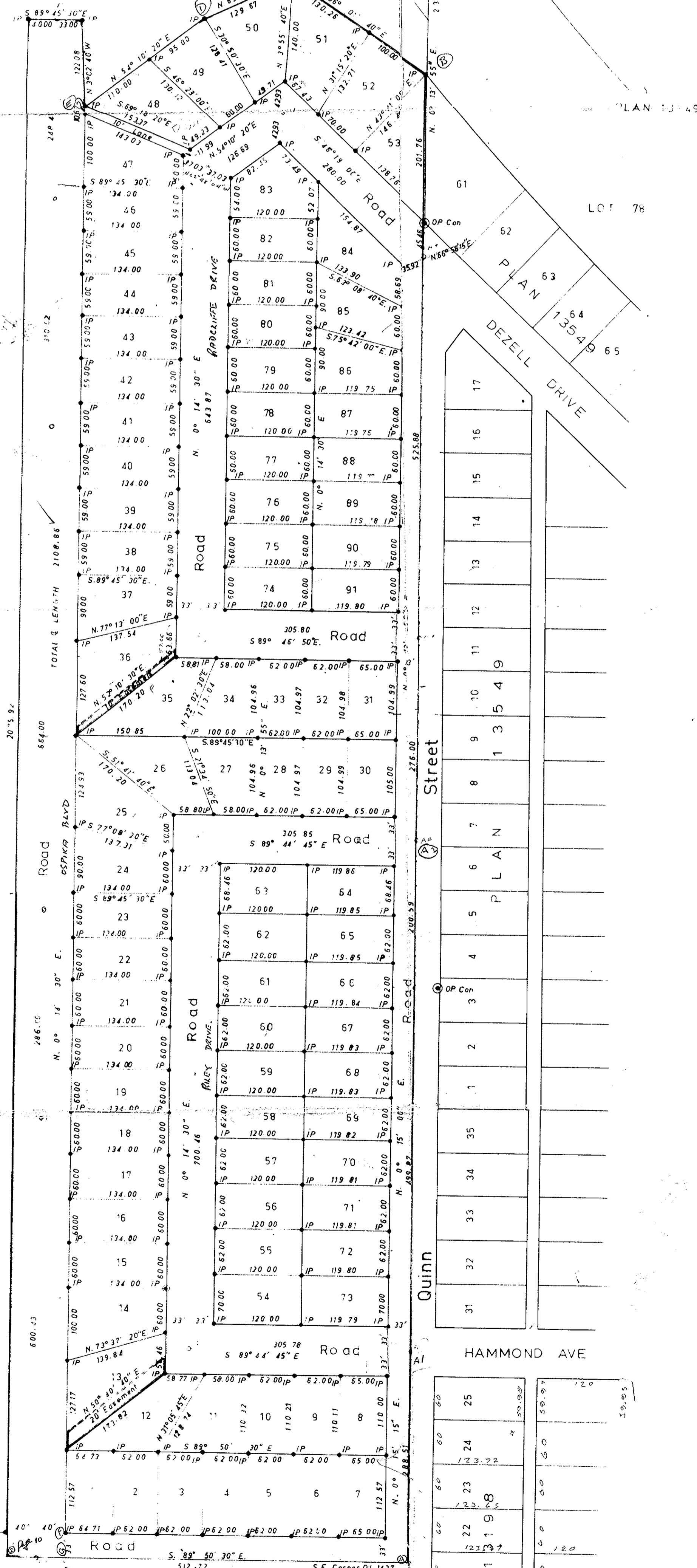
C.C.N.R. Plan A98

D.L. 938-A

Nechako River

LOT 80

C.C.N.R.



PLAN OF SUBDIVISION OF PART OF DISTRICT LOT 1427 CARIBOO DISTRICT. Scale: 1 inch = 100 feet.

Exceptions to District Lot 1427 Cariboo District  
Plan A98  
Plan 10501  
Part lying North of Plan A98 (DD 49356M)

LEGEND  
Bearings are astronomic and are derived from OP.Cons on West Boundary of Plan 13549.  
Old Standard Concrete Post found shown @ OP.Con  
Old Standard Pipe Post found shown @ OPP  
Old Standard Iron Post found shown @ OIP  
Standard Iron Post set shown @ IP  
Hubs, centre lines and tie lines shown in red

I, R.J. Goble, of the City of Prince George, a British Columbia Land Surveyor, make oath and say that I was present at and did personally superintend the survey represented by this plan and that the survey and plan are correct. The said survey was completed on the 12nd day of December 1964.

Sworn before me at the City of Prince George B.C. this 17 day of FEBRUARY 1965

*[Signature]*  
A Commissioner for taking Affidavits within British Columbia

Approved under the Land Registry Act this 22 day of FEB 1965

*[Signature]*  
Approving Officer  
City of Prince George

Owner

Witness

Owner

Witness

List of Co-ordinates

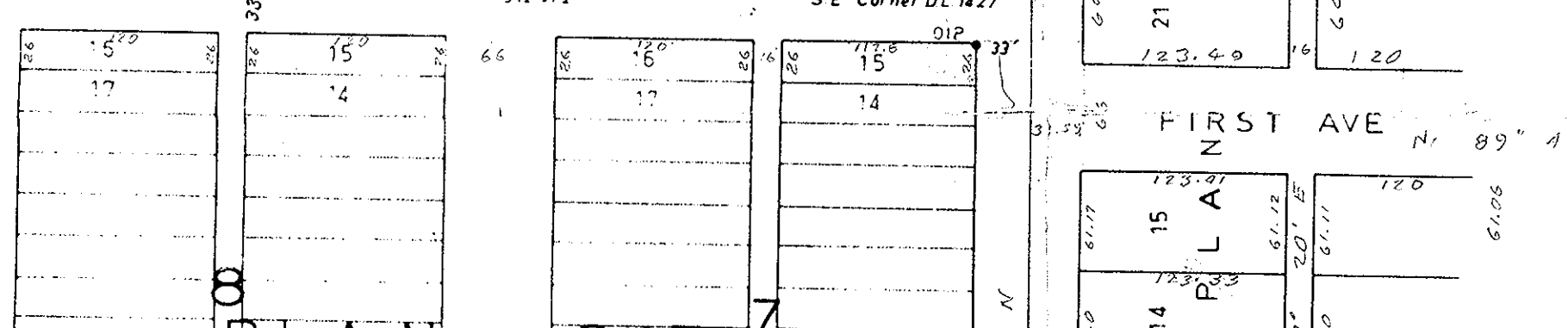
| Station | Total Latitude | Total Departure |
|---------|----------------|-----------------|
| A-1     | 17406.88       | 2726.07         |
| A-2     | 17408.02       | 2420.29         |
| A-3     | 18108.47       | 2423.25         |
| A-4     | 18107.12       | 2729.10         |
| B-1     | 18383.12       | 2730.22         |
| B-2     | 18384.36       | 2424.42         |
| B-3     | 19028.22       | 2427.14         |
| B-4     | 19102.38       | 2529.86         |
| B-5     | 18408.99       | 2732.15         |
| SE1627  | 17718.15       | 2724.79         |
| C-1     | 17719.57       | 2712.07         |
| D-5     | 17719.59       | 2714.60         |
| E-1     | 18055.99       | 2215.81         |
| E-5     | 18669.98       | 2218.61         |
| F-1     | 18280.00       | 2219.92         |
| SW1427  | 17125.45       | 85.37           |
| NW1427  | 22400.40       | 107.30          |

The Seal of Highland Resources Ltd was affixed hereto in the presence of

*[Signature]*  
Secretary

D.L. 1427

SW Corner D.L. 1427  
SE Corner  
Lot 847  
Shown on Plan 10501



City of Prince George Coordinate Grid