

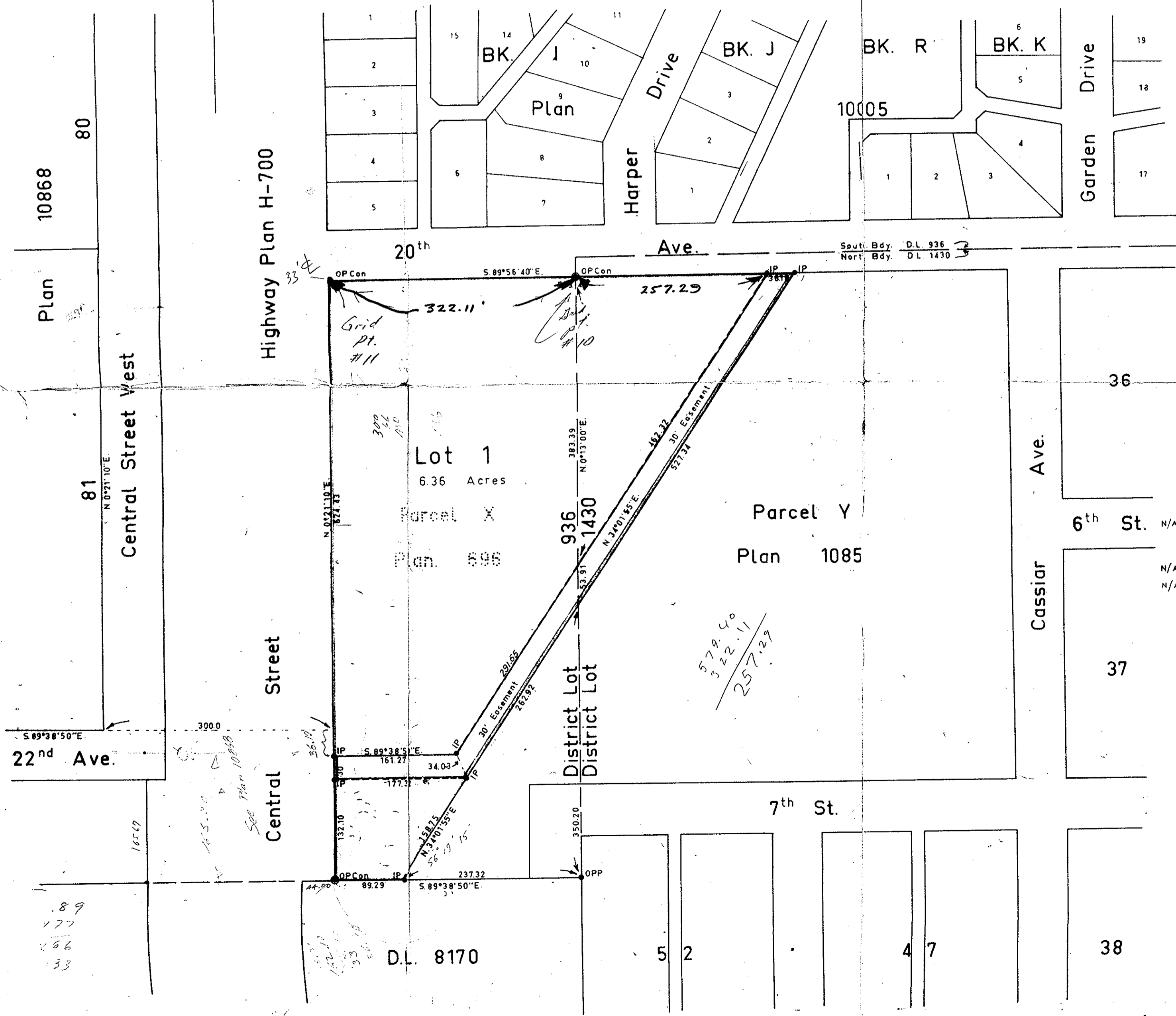
PLOTTED (HK)

Plan of Subdivision of Part of Parcel X, of Blocks 155 and 156, Plan 696
District Lot 936 and Part of Parcel Y,
Plan 1085, District Lot 1430
CARIBOO DISTRICT

PLAN No 15037
Deposited in the Land Registry Office
at Kamloops, on the 18th day of May 1965

Chas. Stewart
Registrar

Scale: 1 inch = 100 feet



- Bearings are astronomic and are derived from Old Concrete Monuments on the East Boundary of Plan H-700 as N.0°21'10"E
- P.con. Standard Concrete Post.
 - N/A ● P.Rock Standard Rock Post.
 - P.P. Standard Pipe Post.
 - I.P. Standard Iron Post.
 - N/A ● P. Wooden Post.
 - N/A ● L.P. Lead Plug.
 - O Denoting "Old"
 - WT. Denoting "Witness"

I, R.J. Gebbs, of the City of Prince George British Columbia Land Surveyor, make oath and say that I was present at and did personally superintend the survey represented by this plan and that the survey and plan are correct.
The said survey was completed on the 25th day of May, 1964

Sworn before me at Prince George this 16th day of Feb. 1965

Approved under the Land Registry Act on the 25 day of FEB 1965

R. J. Gebbs
Approving Officer
City of Prince George, B.C.

R. J. Gebbs
A Commissioner for taking affidavits within British Columbia.

Owner *W. J. Thompson*
Clerk K

Witness *R. J. Gebbs*

W. J. Thompson
Approving Officer
Dept. of Highways, Prince George, B.C.
Clerk

checked	f	s	d	x	McWilliam-Whyte - Series - Gebbs
					B.C. Land Surveyors
Ref. No. 64100					Kamloops - Prince George