

PLAN 15033

Plan of Subdivision of

Lots 14 to 22 inclusive and ammended Lot 13,
Block 9, Lots 14 to 23 inclusive and ammended
Lots 13 and 24, Block 22, Lots 13 to 23 inclusive
and ammended Lot 24, Block 39

Plan 752, District Lot 937, Cariboo District.

Scale: 1 inch=100 feet

Deposited in the Land Registry Office at Kamloops, B.C.
this 12th day of APRIL 1965

Chapman
Registrar

Legend

Bearings are astronomic and are derived from
the W. bdy. of Plan H-700
Old standard concrete posts found shown ● OPCon
Old iron posts found shown ● OIP
Iron posts set shown ● IP



GORDON & MONTROSE LEASED
PROPERTIES LTD.

John DIRECTOR
A. Minnie DIRECTOR

Mortgagee:

CONFEDERATION LIFE ASSOCIATION

B. J. Holmes VICE-PRESIDENT
Gruesler ASSOCIATE TREASURER

APPROVED
FOR EXECUTION

MINE INVEST. DEPT.

I, W.C. Serle of the city of Prince George, British Columbia
Land Surveyor, make oath and say that I was present at
and did personally superintend the survey represented
by this plan and that the survey and plan are correct.

The said survey was completed on
the 11 day of March 1965

W.C. Serle
B.C.L.S.

Sworn before me
this 12th day of MARCH 1965

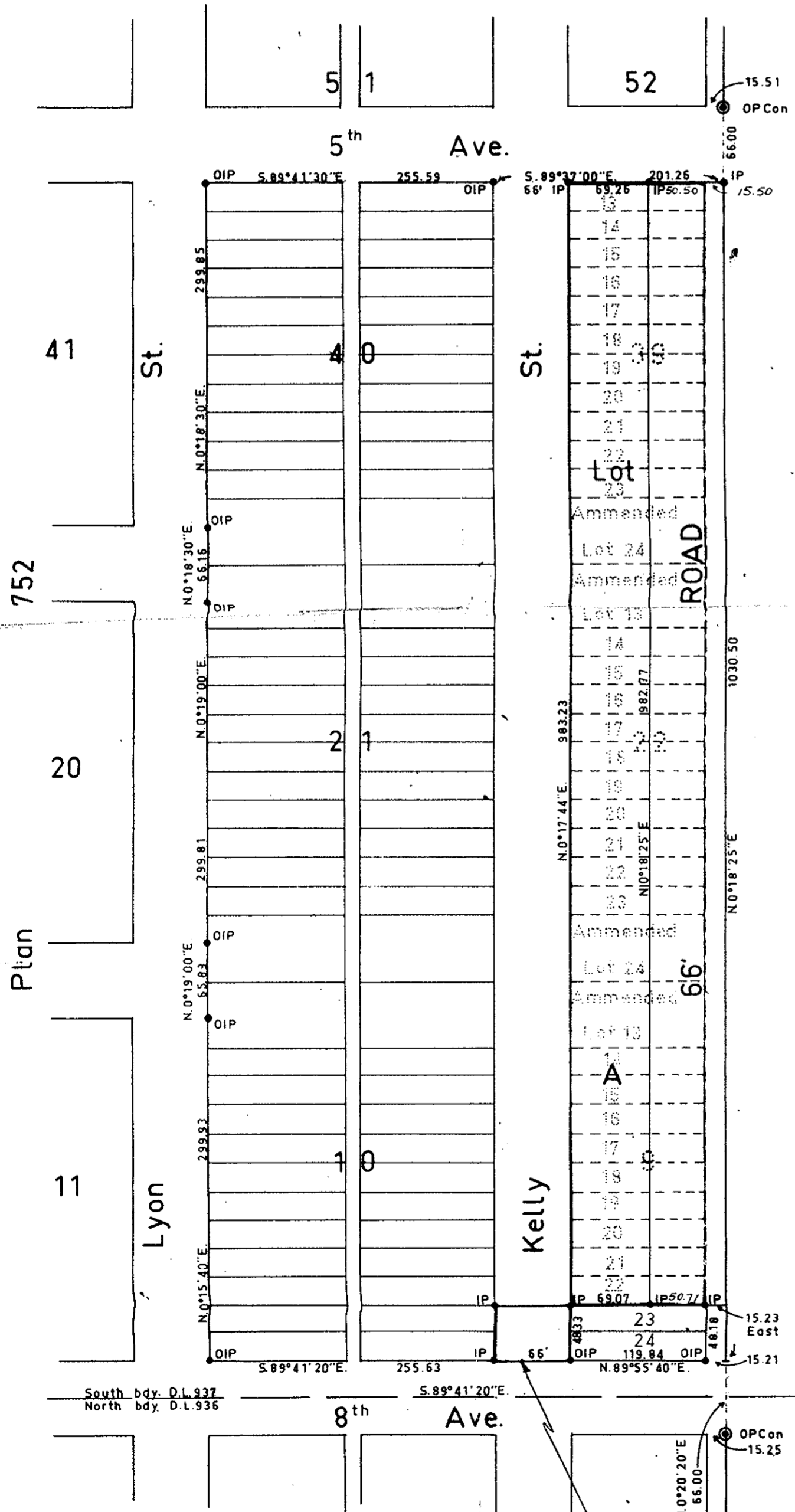
W.C. Serle
A Commissioner for taking of oaths
within British Columbia

Approved under the Land Registry Act
this 16th day of March 1965

Cupmes
Approving Officer
City of Prince George, B.C.

The Corporation of the
City of Prince George B.C.

N.A.



EXPLANATORY PLAN OF STREET CLOSURE

SEE ENG DWG # 694.

(BY LAW 1788)

McWilliam, Whyte, Serle, & Goble

British Columbia Land Surveyors

Checked f s d x Ref. No. 63100-K