

Plan of Subdivision of Lot A
 Plan 9160 District Lot 2508
 Cariboo District

PLAN 15002

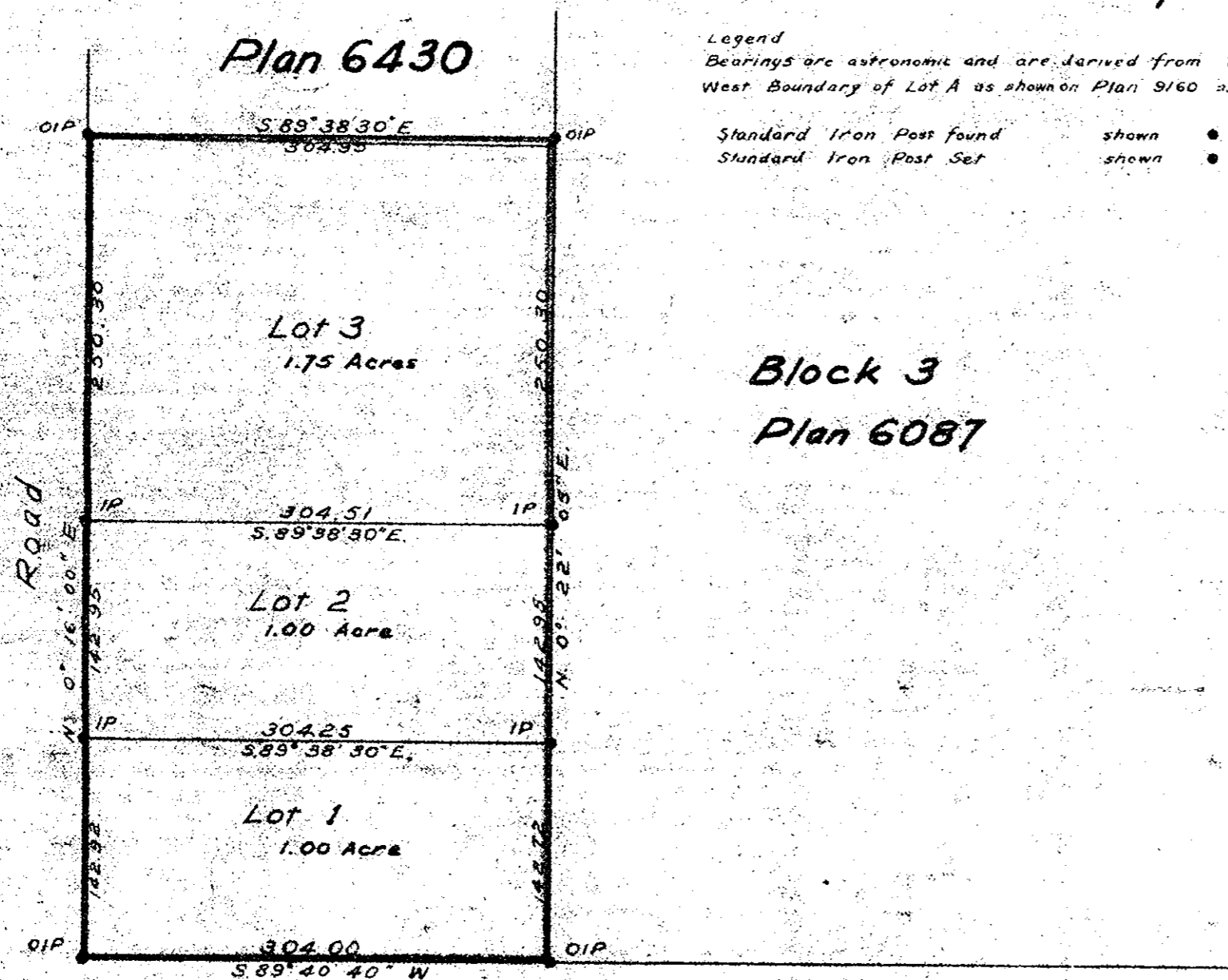
Deposited in the Land Registry Office at Kamloops
 on the 2nd day of April 1965

W. H. Stewart
 Registrar

Scale - 1 inch = 100 feet

Legend
 Bearings are astronomic and are derived from the
 West Boundary of Lot A as shown on Plan 9160 as N 0° 16' 00" E

Standard Iron Post found shown ● OIP
 Standard Iron Post Set shown ● IP



Block 3
 Plan 6087

Block 2
 Plan 6087

I, R. J. Goble, of the City of Prince George, British Columbia Land Surveyor, make oath and say that I was present at and did personally supervise the survey represented by this plan and that the survey and plan are correct. The said survey was completed on the 5th day of November 1964.

R. J. Goble
 B.C.L.S.

Sworn before me at the City of Prince George, B.C. this 6th day of November 1964.

W. H. Stewart
 A Commissioner for taking Affidavits within British Columbia

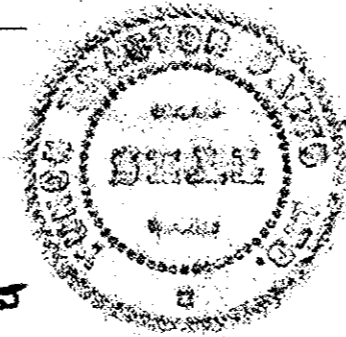
Approved under the Land Registry Act this 5th day of March 1965.

W. H. Stewart
 Approving Officer
 Department of Highways, Prince George, B.C.

22nd Avenue

YUKON TRACTOR PARTS LTD.

H. C. Tuck Pres.
[Signature]
 WITNESS TO BOTH SIGNATURES.



McWilliam, Whyte, Serle & Goble
 British Columbia Land Surveyors
 1595 - 5th Avenue, Prince George, B.C.

Checked	P	S	D	X	Ref. No. 64273
---------	---	---	---	---	----------------