

10
KOTED (FB) (FA)

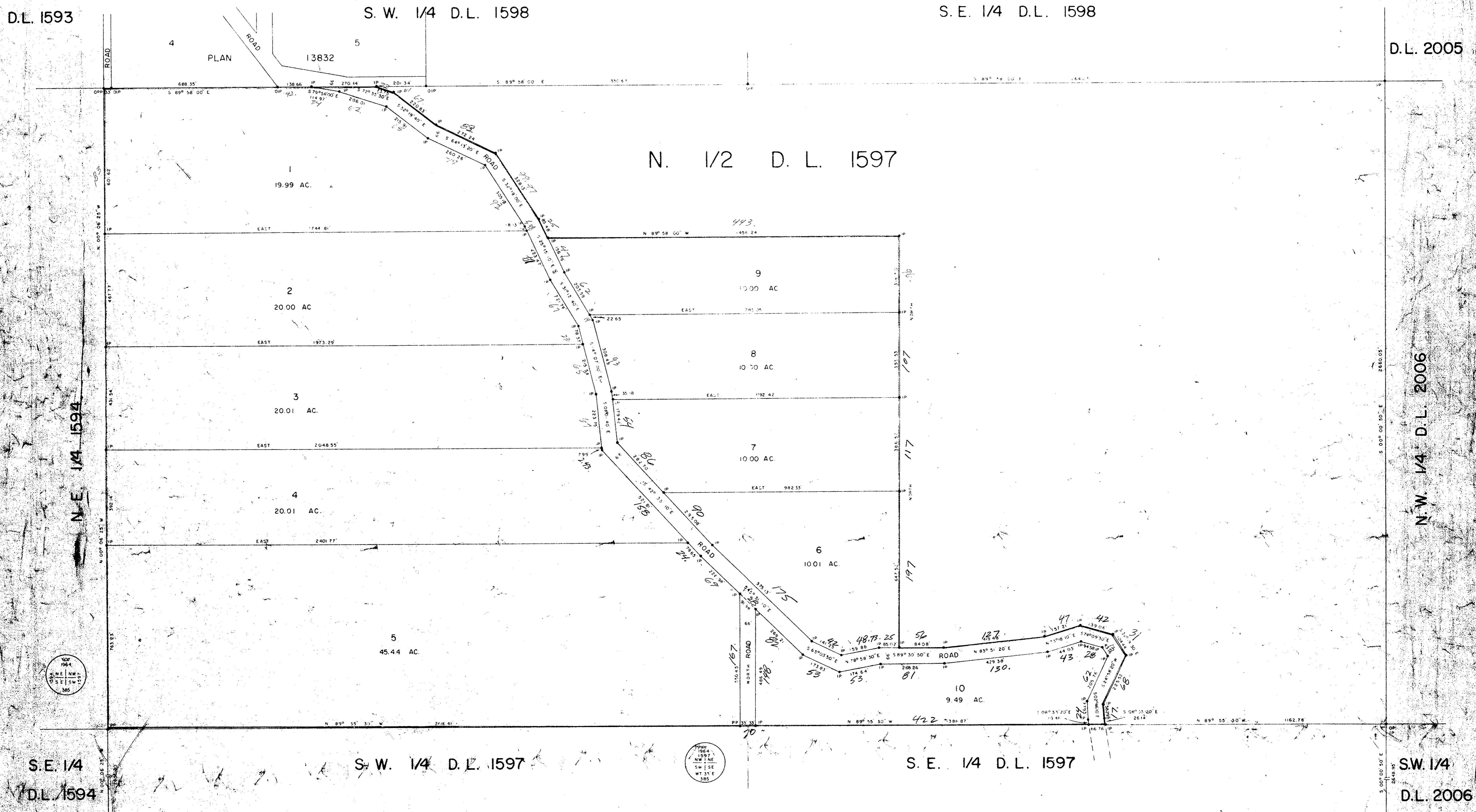
PLAN OF SUBDIVISION OF PART OF
THE NORTH HALF OF
DISTRICT LOT 1597
CARIBOO DISTRICT - BRITISH COLUMBIA
SCALE 1" = 200'

PLAN No. 14967
Deposited in the Land Registry
Office at Kamloops, B.C. this
23 day of MARCH, 1965

W.D. Usher
Surveyor

NOTE: Bearings are astronomic, derived from the south
boundary of S.W. 1/4 of D.L. 1598 as shown on
Plan 13832

LEGEND: ● OIP denotes an old iron pin found
● IP denotes an iron pin placed on this survey
● PIP denotes an old pipe post found
● PP denotes a pipe post placed on this survey
● OP denotes an old wooden post found



S.E. 1/4
D.L. 1594

S.W. 1/4 D.L. 1597

S.E. 1/4 D.L. 1597

SW. 1/4
D.L. 2006

D.L. 1595 D.L. 1596

D.L. 1596 D.L. 2007

I, DONALD A. DUFFY of the City of Prince George, a
British Columbia Land Surveyor, make oath and say that
I was present at and did personally superintend the
survey represented by this plan and that the survey and
plan are correct. The said survey was completed on
the 8th day of September, 1964.

D.A. Duffy
Owner
pos wire
Witness

Approved under the Land Registry Act
this 19 day of October, 1964
W.D. Usher
Approving Officer, Dept. of Highways

Reapproved under the Land Registry Act
this 23 day of March, 1965
W.D. Usher
Approving Officer, Dept. of Highways

Sworn before me this 8th day of September, 1964.
W.D. Usher
A Commissioner for taking Affidavits
within the Province of British Columbia.

W. D. USHER & ASSOCIATES
LAND SURVEYORS
PRINCE GEORGE, B.C.
W 33, 34, 36-40 468
AC 2-6, 9, 10
RD 8