

Plan of Subdivision of Part
of the South East 1/4 of District Lot 954
Plan B 1643 except Plans 11699 and 9683
Cariboo District and 11294
Scale: 1" = 100'

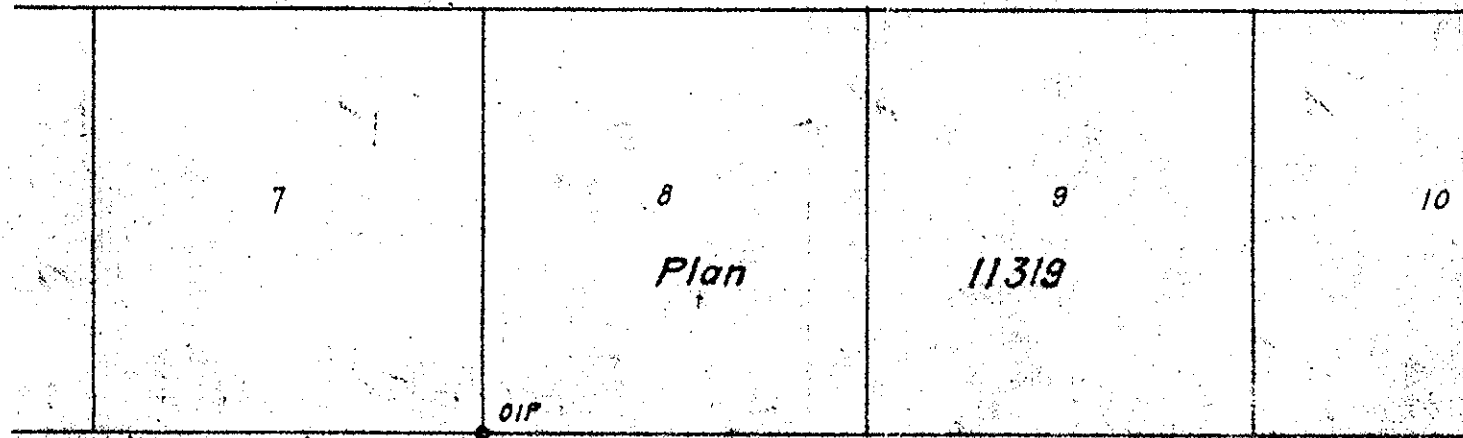
Plan No 14860
Deposited in the Land Registry Office at Kamloops, B.C.
this 10 day of Feb 1965

[Signature]
Registrar

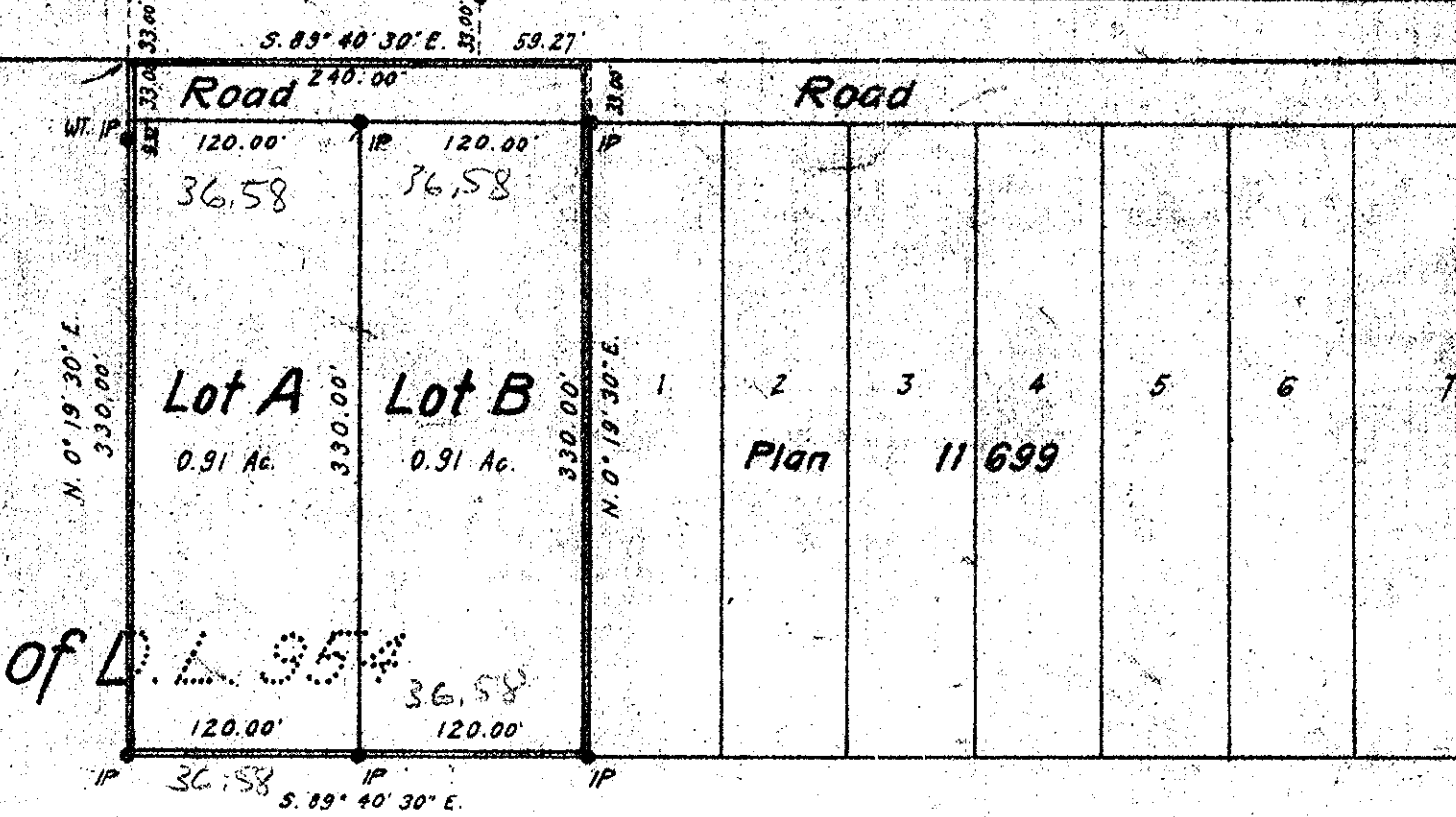
Legend
Bearings are astronomic and are derived
from Plan 11699.

Old Iron Posts found, shown • OIP
Iron Posts set, shown • IP

N.E. 1/4 of D.L. 954



Found OIP and OWP
N.W. corner of S.E. 1/4 D.L. 954
S. 89° 40' 30" E. 1377.97'



I, R. J. Goble, of the City of Prince George, British Columbia, do hereby make oath and say that I was present at the survey represented by this plan and that the survey was completed on the 18th day of September 1964.

Sworn before me
this 23rd day of September 1964

[Signature]
A Commissioner for taking affidavits
within British Columbia

Approved under the Land Registry Act
this 9th day of April 1965

[Signature]
Approving Officer, Dept. of Highways
Prince George, B.C.

[Signature]
Witness

REAPPROVED
[Signature]
APPROVING OFFICER, DEPT. OF HIGHWAYS
DECEMBER 14th 1964

Frac. N.W. D.L. 954

S.W. 1/4 D.L. 954

S.E. 1/4 of D.L. 954

Plan B 1643

THE ROYAL TRUST COMPANY
[Signature]
FOR MANAGER, VANCOUVER BR.
[Signature]
FOR SECRETARY, VANCOUVER BR.

Inland Natural Gas Co. Ltd.
Approved by
[Signature] Pres.
[Signature]
TREAS.

McWilliam, Whyte, Serle & Goble
British Columbia Land Surveyors