

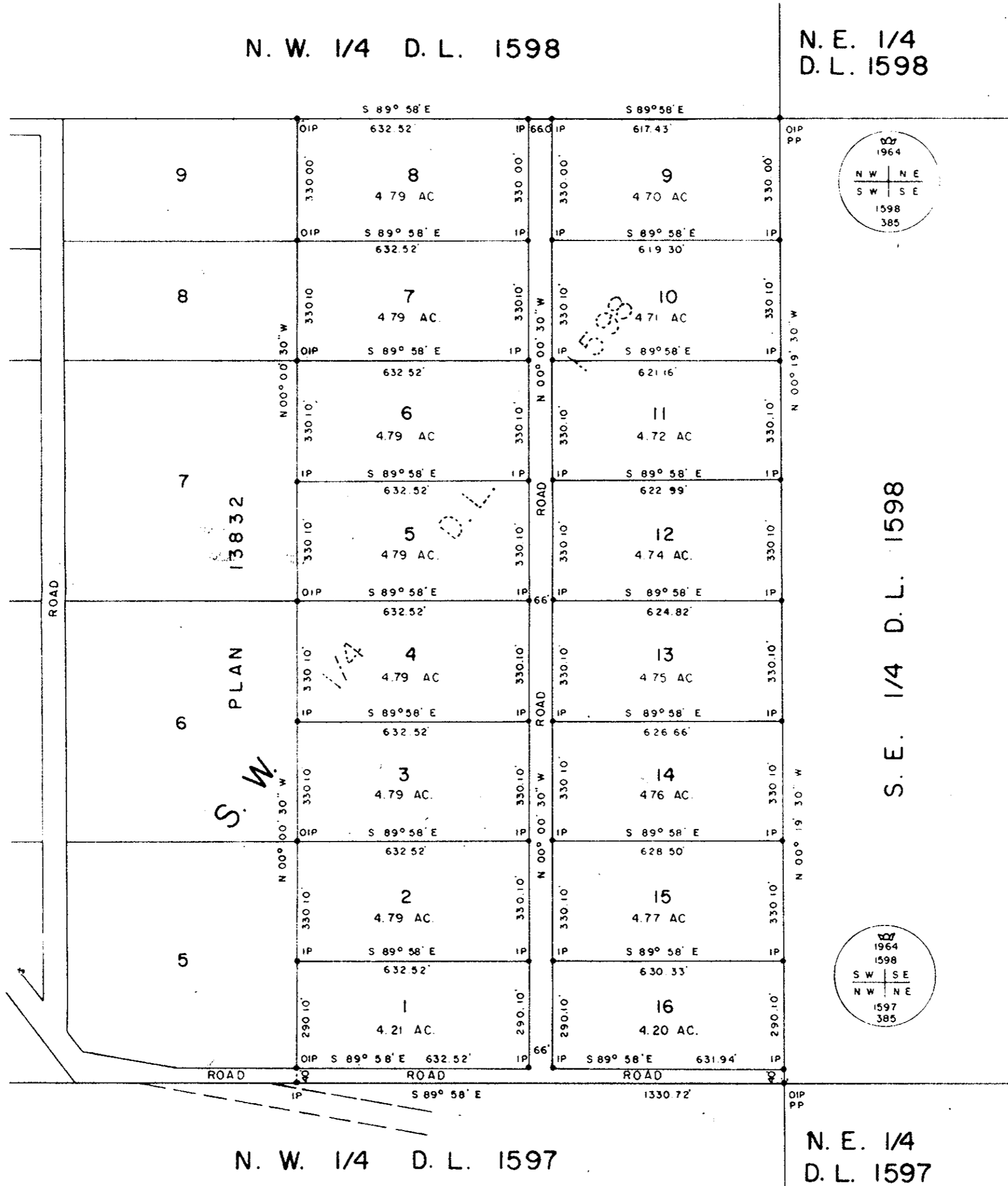
PLAN OF SUBDIVISION OF
S. W. 1/4 DISTRICT LOT 1598
 EXCEPT PLAN 13832
 CARIBOO DISTRICT - BRITISH COLUMBIA
 SCALE: 1" = 300'

PLAN No. **14827**
 Deposited in the Land Registry
 Office at Kamloops, B.C. this
 2 day of Feb., 1964

Chas. Stewart
 Registrar

NOTE: Bearings are astronomic, derived from the north boundary of S.W. 1/4 D.L. 1598 as shown on Plan 13832.

LEGEND: ● OIP denotes an old iron pin found.
 ● IP denotes an iron pin placed on this survey.
 ● PP denotes a pipe post placed on this survey.



I, DONALD A. DUFFY of the City of Prince George, a British Columbia Land Surveyor, make oath and say that I was present at and did personally superintend the survey represented by this plan and that the survey and plan are correct. The said survey was completed on the 13th day of July, 1964.

B. W. Lettman
 Owner
D. A. Duffy
 Witness

Sworn before me this 27th day of August, 1964.
D. A. Duffy
 B.C.L.S.

Mortgagee:
BRITISH MORTGAGES LTD

Approved under the Land Registry Act this 14th day of December, 1964.

W. D. Usher & Associates
 A Commissioner for taking Affidavits within the Province of British Columbia.

Seal of *W. D. Usher & Associates*
 Approved in presence of *W. D. Usher & Associates*
W. D. Usher & Associates
 Approving Officer, Dept. of Highways.

W. D. USHER & ASSOCIATES
 LAND SURVEYORS
 PRINCE GEORGE B.C.
 W 31-32-35-36 1425