

E

1474  
March 6<sup>th</sup> 1916.

*[Signature]*  
District Engineer

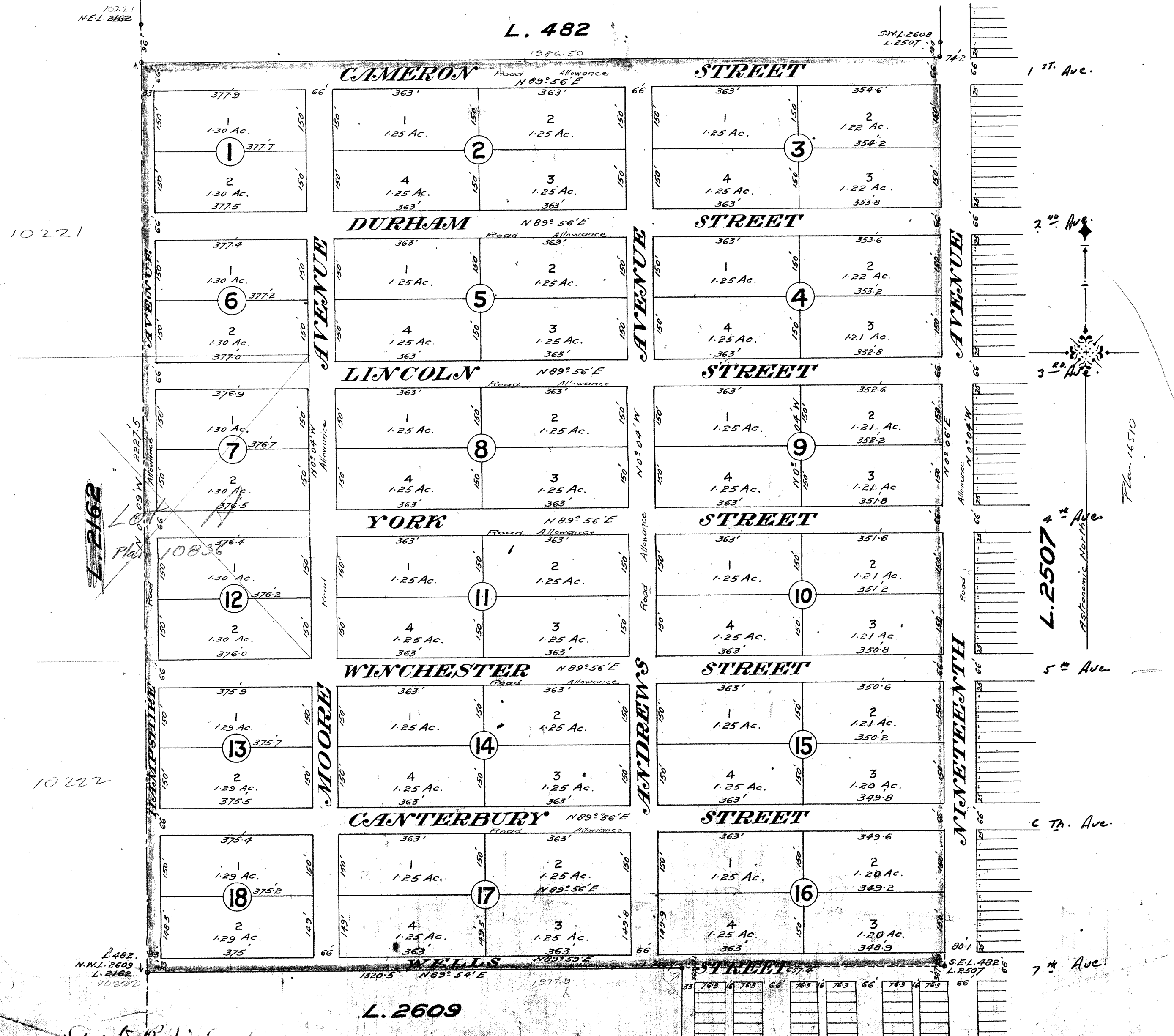
By - L. and 2198

# SUBDIVISION of part of LOT 482 Cariboo District B.C.

I, F. P. Burden, of the town of Fort George, British Columbia  
Land Surveyor, make oath and say, that I was present  
at Lot 482, Cariboo District, and did personally superintend  
the survey represented by this plan, and that the survey  
and plan are correct. The said survey was completed  
on the 2<sup>nd</sup> day of August, A.D. 1915.  
Sworn before me this 2<sup>nd</sup>  
day of August, A.D. 1915.  
*F. P. Burden*  
B.C.L.S.  
*Frederic J. Shearer*

The corners of all lots shown on this plan are defined on  
the ground by 2" x 2" x 30" wooden posts.

—SCALE 200 FT. = 1 INCH.—



1<sup>st</sup> Ave.

2<sup>nd</sup> Ave.

3<sup>rd</sup> Ave.

4<sup>th</sup> Ave.

5<sup>th</sup> Ave.

6<sup>th</sup> Ave.

7<sup>th</sup> Ave.

L. 2507

Astronomic North

Plan 16510

L. 482  
N.W.L. 2609  
L. 2162  
10222

*[Signature]*  
*[Signature]*

*[Signature]*

L. 2609

S.E.L. 482  
L. 2507