

PLAN OF SUBDIVISION OF
 LOT 1, PLAN 14349
 DISTRICT LOT 624
 AND LOT 38, PLAN 14430
 DISTRICT LOT 625
 CARIBOO DISTRICT - BRITISH COLUMBIA
 SCALE 1" = 100'

~~NO METRIC BASE MAP~~
 (DA)

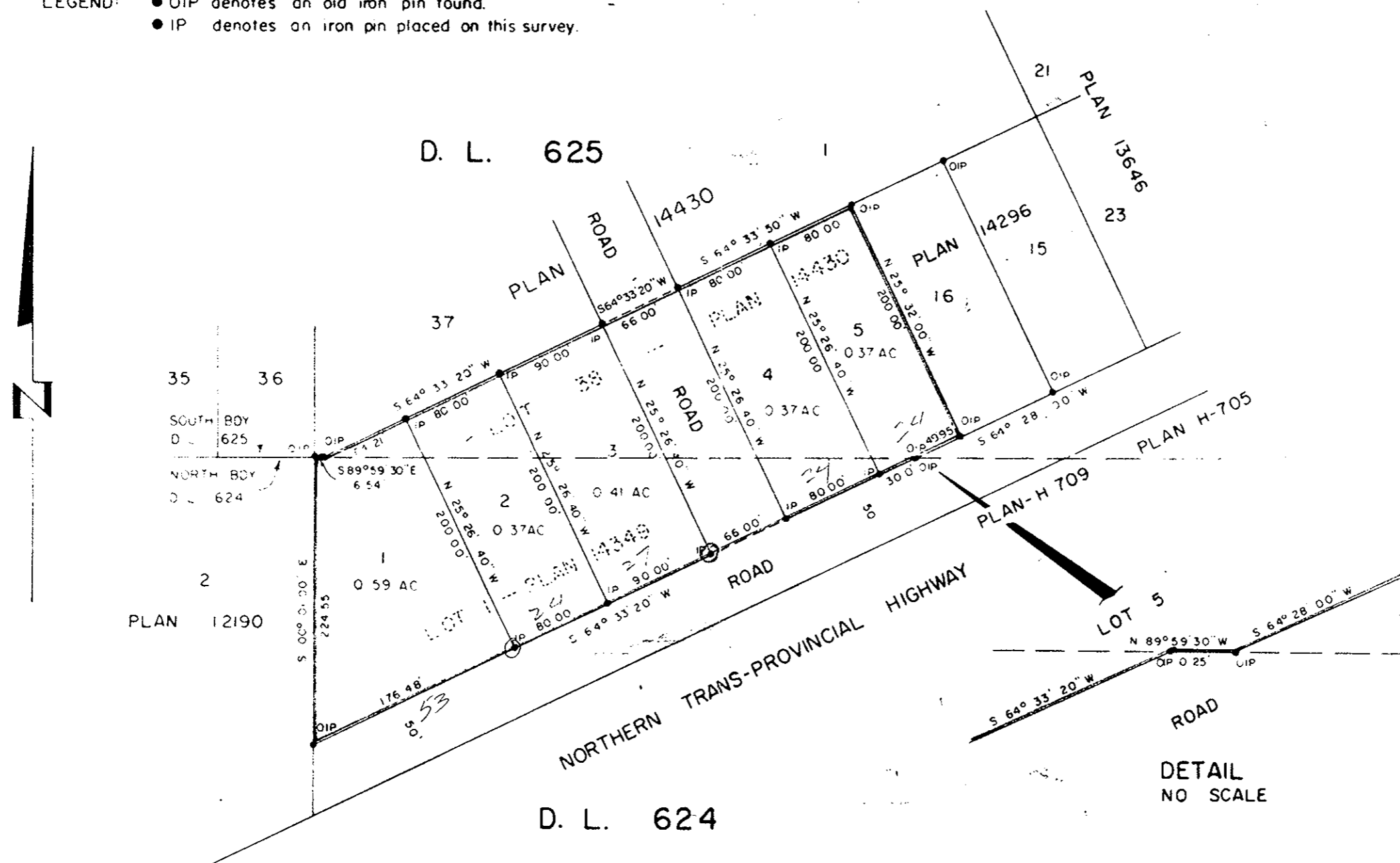
PLOTTED (DA)

PLAN No 14664
 Deposited in the Land Registry
 Office at Kamloops, B.C. this
 18 day of Feb, 1965

[Signature]
 Registrar

NOTE Bearings are astronomic, derived from the
 south boundary of Lot 1, Plan 14349, D.L. 624.

LEGEND: ● OIP denotes an old iron pin found.
 ● IP denotes an iron pin placed on this survey.



I, DONALD A DUFFY, of the City of Prince George, a
 British Columbia Land Surveyor, make oath and say that
 I was present at and did personally superintend the
 survey represented by this plan and that the survey and
 plan are correct. The said survey was completed on
 the 5th day of September, 1964.

[Signature]
 B.C.L.S.

Sworn before me this 11th
 day of September, 1964.

[Signature]
 A Commissioner for taking Affidavits
 within the Province of British Columbia.

Prince George Developments Ltd:

Rachelson Director
James Macdonald Director

Mortgagee:

Douglas J. McDonald

Rachelson Witness

Commonwealth Savings Plan, Ltd.

[Signature]

Approved under the Land Registry Act
 this 7th day of October, 1964.

[Signature]
 Approving Officer, Dept. of Highways

W.D. USHER & ASSOCIATES
 LAND SURVEYORS
 PRINCE GEORGE - B.C.
 P 54 63-69 1413