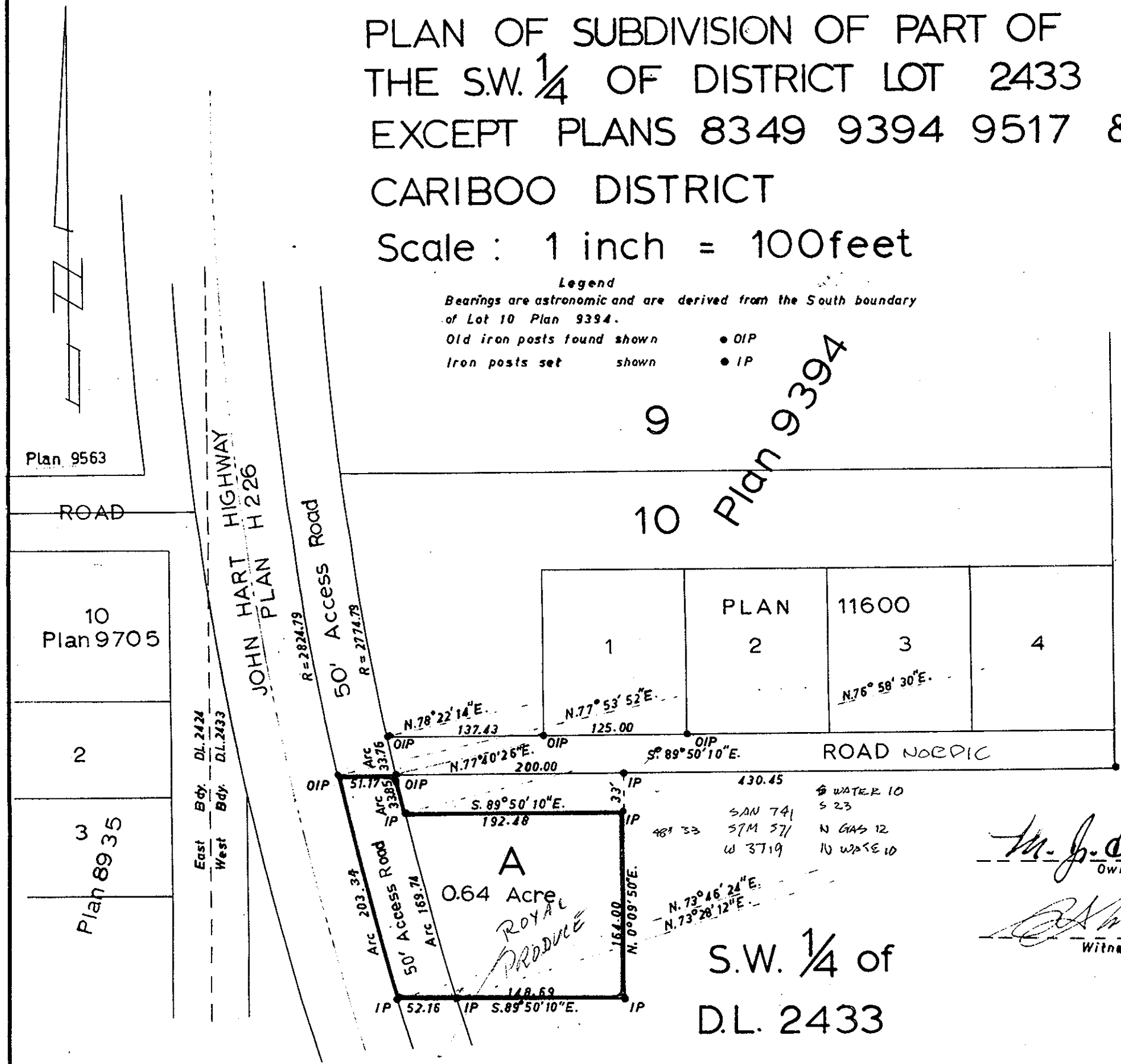


29887

# PLAN OF SUBDIVISION OF PART OF THE S.W. 1/4 OF DISTRICT LOT 2433 EXCEPT PLANS 8349 9394 9517 & 11011 CARIBOO DISTRICT

Scale : 1 inch = 100feet

**Legend**  
Bearings are astronomic and are derived from the South boundary of Lot 10 Plan 9394.  
Old iron posts found shown • OIP  
Iron posts set shown • IP



S.W. 1/4 of D.L. 2433

## Plan No 14477

Deposited in the Land Registry Office at Kamloops, B. C. this 7 day of Oct 1964

*[Signature]*  
Registrar

I, R.J.Goble, of the city of Prince George, British Columbia Land Surveyor, make oath and say that I was present at and did personally superintend the survey represented by this plan and that the survey and plan are correct. The said survey was completed on the 8th day of June 1964.

B.C.L.S.  
Sworn before me at the city of Prince George this 9th day of June 1964

*[Signature]*  
Owner

*[Signature]*  
A Commissioner for taking affidavits within British Columbia

*[Signature]*  
Witness

Approved under the Land Registry Act this 5th day of August 1964

*[Signature]*  
Approving Officer,  
Dept. of Highways, Victoria, B.C.

McWilliam Whyte Serle & Goble  
British Columbia Land Surveyors  
1595 5th Avenue Prince George

Checked	F	S	D	X	Ref. No. 6
WS	1	1	1	3	

*Notes & Varieties only*