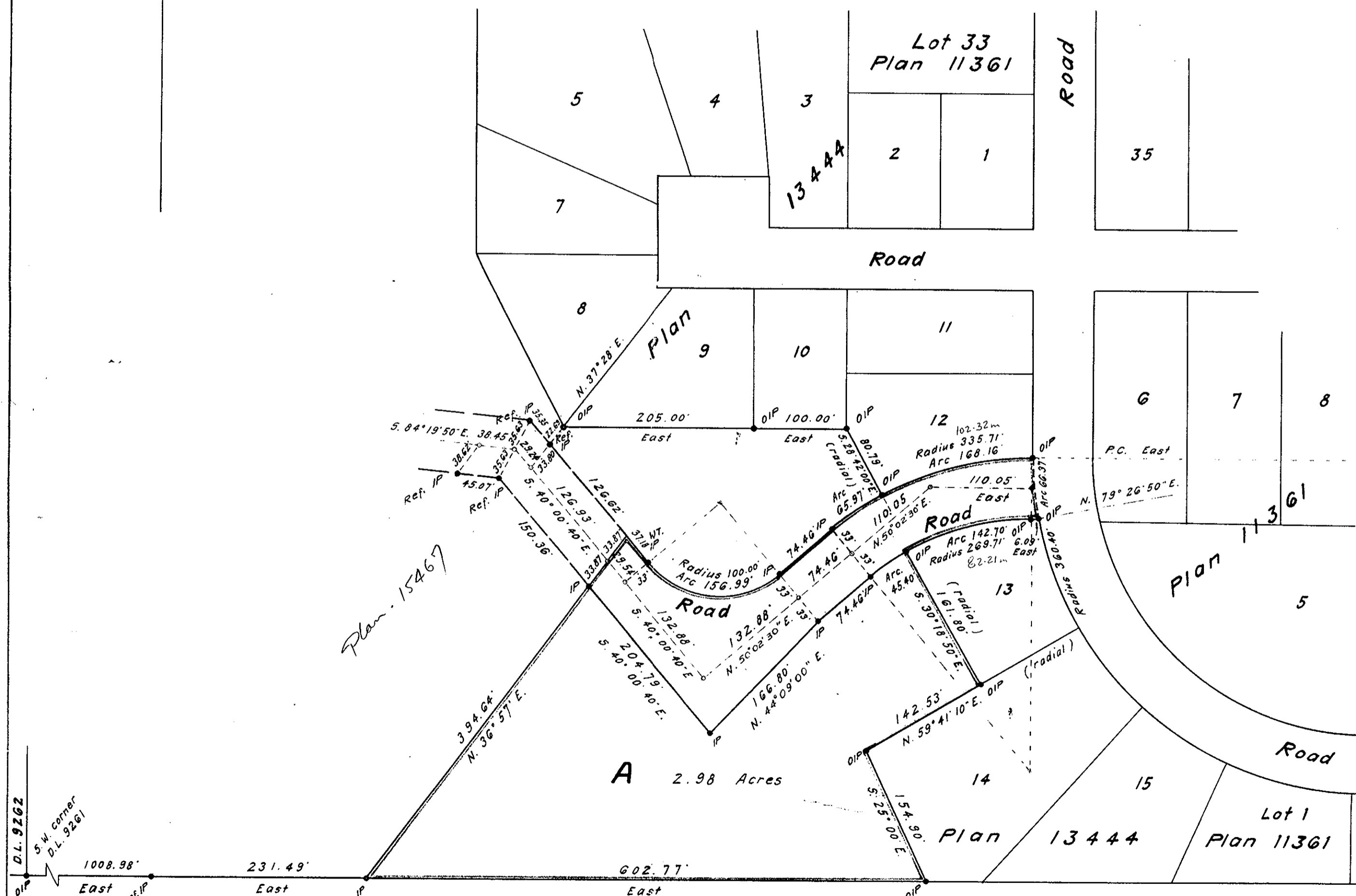


Plan of Subdivision
of Part of District Lot 9261
except Plans 11361 and 13444
Cariboo District
Scale: 1 inch = 100 feet

PLAN No 14455
Deposited in the Land Registry Office
at Kamloops, B.C. on the 24th day of September 1964.

[Signature]
Registrar



Bearings are astronomic and are derived from the South Boundary of D.L. 9261

- N/A @ R.con. Standard Concrete Post.
- N/A @ R. Rock Standard Rock Post.
- N/A @ P.P. Standard Pipe Post.
- I.P. Standard Iron Post.
- N/A @ P. Wooden Post.
- N/A @ L.P. Lead Plug.
- O Denoting "Old"
- WT. Denoting "Witness"
- Ref. Denoting "Reference"

I, R.J. Goble, of the City of Prince George British Columbia Land Surveyor, make oath and say that I was present and did personally superintend the survey represented by this plan and that the survey and plan are correct. The said survey was completed on the 1st day of July 1964.

Sworn before me at Prince George, B.C. this 30th day of July 1964.

Approved under the Land Registry Act on the 28th day of July 1964.

[Signature]
Approving Officer

[Signature]
A Commissioner for taking affidavits within British Columbia.

Owner *[Signature]*
Witness *[Signature]*

D.L. 905

Ref. No. 64104	McWilliam - Whyte - Serie - Goble
checked	B.C. Land Surveyors
	Kamloops - Prince George
1	1
1	1
1	3