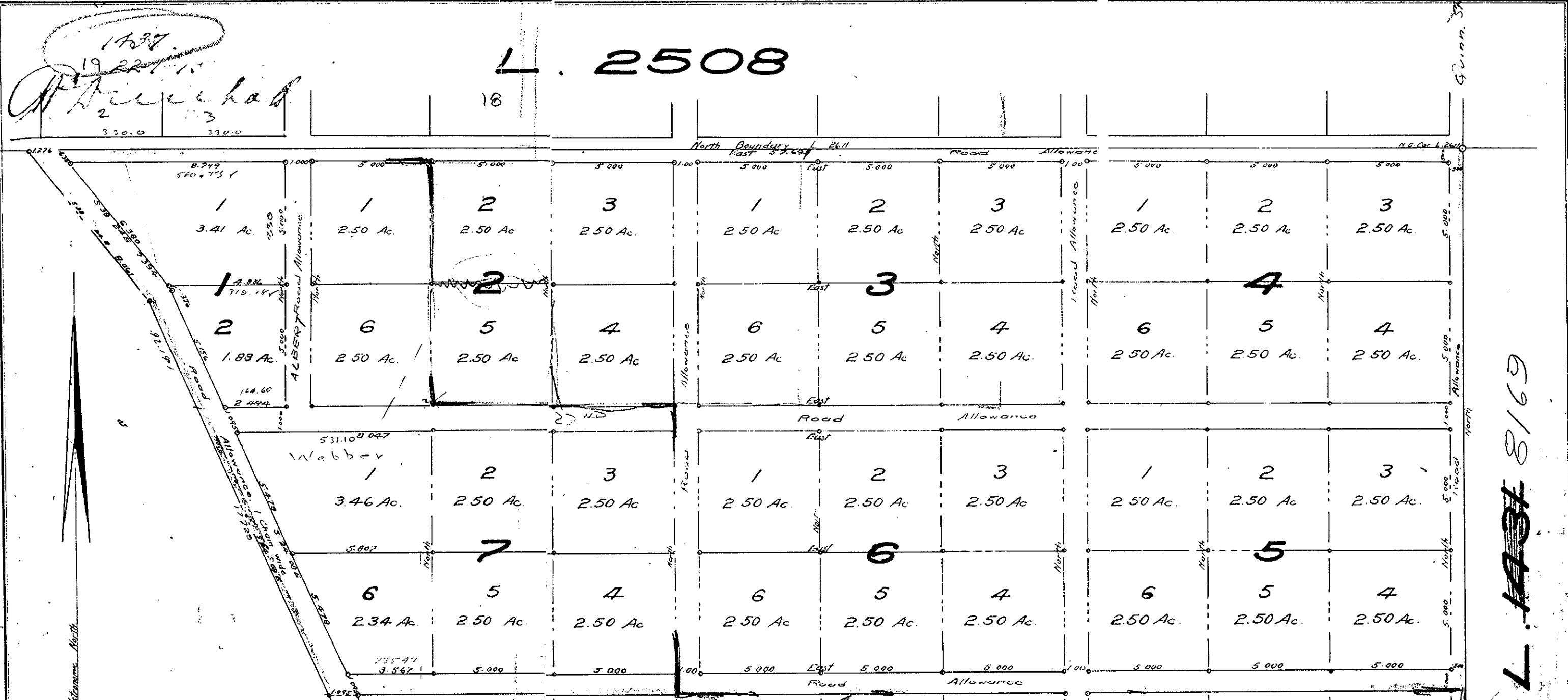


1437



1437  
 1922  
 2  
 3  
 330.0  
 330.0

L. 2508

Lot 2611

SUBDIVISION PLAN

OF PART OF

LOT 2611

CARIBOO DISTRICT.

B.C.

SCALE: 4 CHAINS TO INCH.

I, F.P. Burden, of the Town of Fort George, British Columbia land surveyor, make oath and say that I was present at and did personally superintend the survey represented by this plan, and that the survey and plan are correct. The said survey was completed on the 5th day of January, 1915.

Sworn before me this day of January, 1915. } F. P. Burden

Witness  
 J. P. Chapman  
 Jan. 11-1915.  
 A. M. Dickson

Bearings are Astronomic, derived from South Bay of Lot 2508  
 Corners of all lots are defined on the ground by 3"x3" x 30" wood posts.

L. 2508 7

Gunn St

Road Allowance

Road Allowance

Road Allowance

Road Allowance

Road Allowance

Road Allowance

Road Allowance

Road Allowance

Road Allowance

Road Allowance