

Plotted (KR), (KS)

1963  
4037 821<sup>A</sup>  
818  
384

D.L. 4037

D.L. 821<sup>A</sup>

PLAN No 14369

Deposited in the Land Registry Office in Kamloops, B.C. this 24 day of Aug 1964.

Registrar *[Signature]*

N. W. 1/4 D.L. 818

N. E. 1/4 D.L. 818

PLAN OF SUBDIVISION OF PART OF  
S. W. 1/4 DISTRICT LOT 818  
EXCEPT PLANS 10870 & 12238  
CARIBOO DISTRICT - BRITISH COLUMBIA

SCALE: 1" = 100'

NOTE: Bearings are astronomic, derived from the south boundary of District Lot 818.

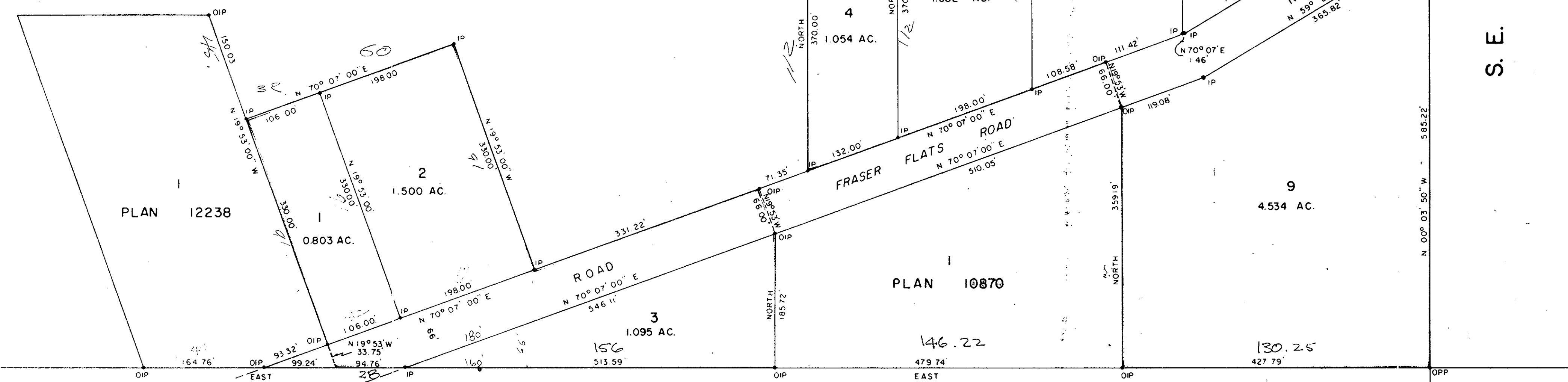
LEGEND: ● OIP denotes an old iron pin found.  
● IP denotes an iron pin placed on this survey.  
● OPP denotes an old pipe post found.

MADE BY:  
10" BALSAM N44°E 25.4'  
6" BIRCH N65°W 15.2'



S. W. 1/4 D. L. 818

S. E. 1/4 D. L. 818



PLAN 12238

PLAN 10870

N. W. 1/4 D. L. 819

N. E. 1/4 D. L. 819

I, DONALD A. DUFFY, of the City of Prince George, a British Columbia Land Surveyor make oath and say that I was present at and did personally superintend the survey represented by this plan and that the survey and plan are correct. The said survey was completed on the 5th day of May, 1964.

*[Signature of Donald A. Duffy]*  
D.A. Duffy  
S.L.S.

Sworn before me this 12 day of May 1964.

*[Signature of Commissioner]*  
A Commissioner for taking Affidavits within the Province of British Columbia.

*[Signature of Owner]*  
Owner

*[Signature of Witness]*  
Witness

Approved under the Land Registry Act this 22 day of May 1964

*[Signature of Approving Officer]*  
Approving Officer, Dept. of Highways.