

14333

PLAN No 14333

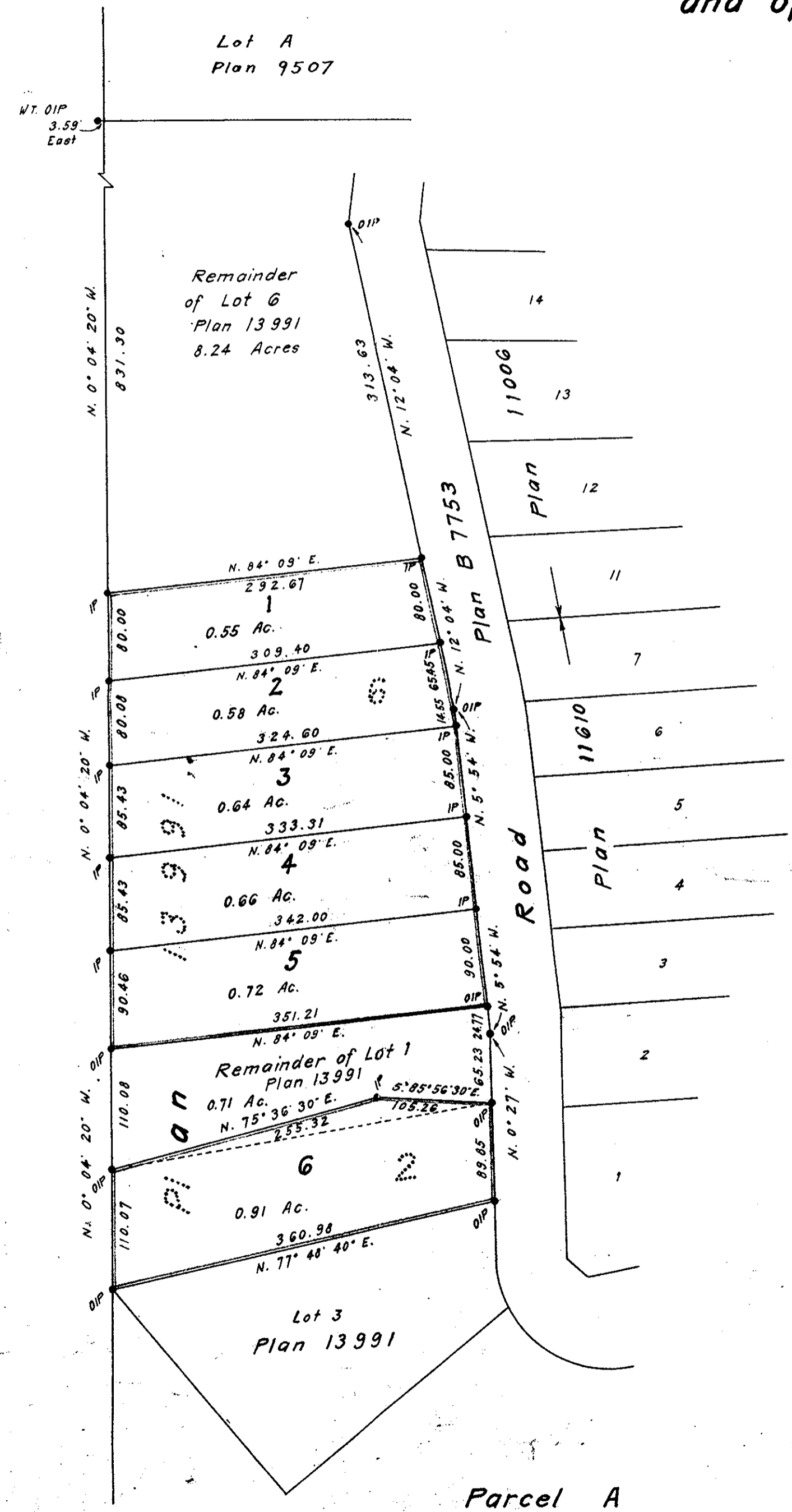
Deposited in the Land Registry Office  
at Kamloops on the 4 day of Aug 1964

*Chas. F. ...*  
Registrar

### Plan of Subdivision of Lot 2 and of Parts of Lots 1 and 6, Plan 13991 District Lot 4039 Cariboo District

Scale: 1 inch = 100 feet

S.E. 1/4 District Lot 4046



85 56 30  
0 27  
85 83 30  
86 23 30

Bearings are astronomic and are derived from  
the West boundary of Lot 6, Plan 13991.

- ⊙ P.con. .... Standard Concrete Post.
- ⊙ P.Rock .... Standard Rock Post.
- P.P. .... Standard Pipe Post.
- I.P. .... Standard Iron Post.
- P. .... Wooden Post.
- L.P. .... Lead Plug.
- .... Denoting "Old"
- WT. .... Denoting "Witness"

I, R.J. Goble, of the City of Prince George,  
British Columbia Land Surveyor, make oath and  
say that I was present at and did personally  
superintend the survey represented by this  
plan and that the survey and plan are correct.

The said survey was completed on  
the 25th day of May 1964

Sworn before me at PRINCE GEORGE B.C.  
this 26 day of MAY 1964

Approved under the Land Registry Act  
on the 26th day of JUNE 1964.

*W. A. ...*  
Approving Officer  
Dept. of Highways, Prince George, B.C.

*Mike Minette*  
Owner  
*Frankella A. Ranallo*

Witness *W. J. ...*

Ref. No. 64 085 (64085)		McWilliam - Whyte - Serle - Goble B.C. Land Surveyors	
checked Us	✓	✓	✓
		Kamloops - Prince George 1535 - 5th Ave	