

Plotted (DA)

PLAN OF SUBDIVISION OF  
LOTS 11, 12, & 13, PLAN 13483 &  
LOTS 19, 24, 25, 26, 27, 28, 29, 30, & 31, PLAN 13646  
DISTRICT LOT 625  
AND SUBDIVISION OF PART OF  
S. W. 1/4 DISTRICT LOT 625  
EXCEPT PLANS 13483 & 13646  
CARIBOO DISTRICT - BRITISH COLUMBIA  
SCALE: 1" = 200'

PLAN No. 14296

Deposited in the Land Registry  
Office at Kamloops, B. C. this  
14 day of Aug., 1964.

*John Howard*  
Registrar

NOTE: Bearings are astronomic, derived from the  
north boundaries of Lots 26 to 31, Plan 13646.

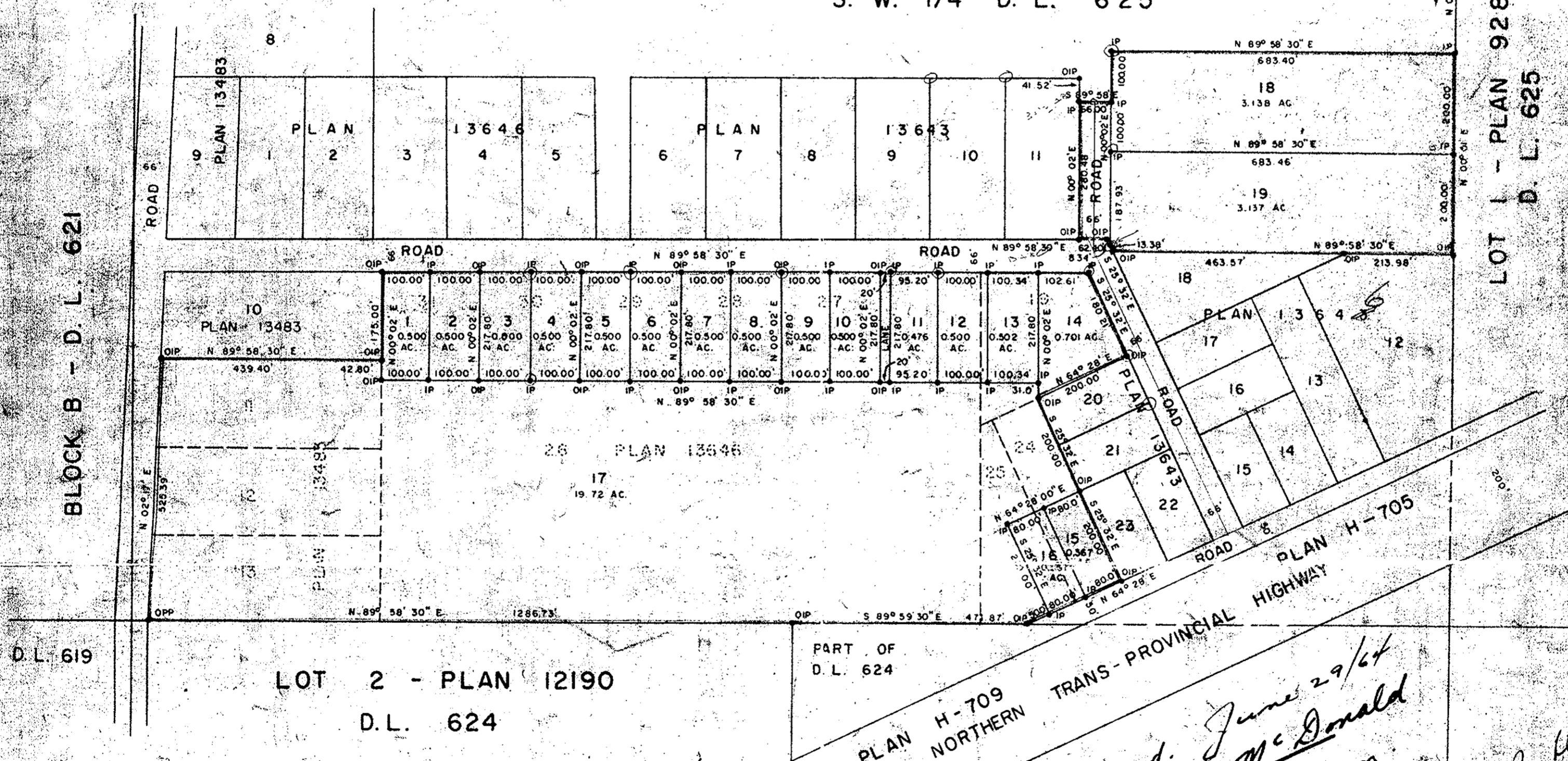
LEGEND: ●OIP denotes an old iron pin found.  
●IP denotes an iron pin placed on this survey.  
●OPP denotes an old pipe post found.

N. W. 1/4 D.L. 625  
N. E. 1/4  
D.L. 625

S. W. 1/4 D. L. 625

BLOCK B - D. L. 621

LOT 1 - PLAN 9280  
D. L. 625



D.L. 619

LOT 2 - PLAN 12190  
D.L. 624

PART OF  
D. L. 624

I, DONALD A. DUFFY of the City of Prince George, a  
British Columbia Land Surveyor make oath and say that  
I was present at and did personally superintend the  
survey represented by this plan and that the survey  
and plan are correct. The said survey was completed  
on the 13th day of June, 1964.

*Donald A. Duffy*  
B.C.L.S.

Sworn before me this 18th  
day of June, 1964.

*John Howard*  
A Commissioner for taking Affidavits  
within the Province of British Columbia.

Prince George Developments Ltd.

*R. Nelson*  
Director  
*Bruce D. McDonald*  
Director

Approved: June 29/64  
*Douglas J. McDonald*  
Witness *R. Nelson*

Approved June 21/64  
*Commissioner of Savings Plan Unit*  
*Per. Robinson*

Approved under the Land Registry Act  
this 24th day of JUNE, 1964.

*John Howard*  
Approving Officer, Dept. of Highways.

W. D. USHER & ASSOCIATES  
LAND SURVEYORS  
PRINCE GEORGE, B.C.  
PLAN 66-65