

Plan of Subdivision of Part of
 Lot A, Plan 10231, District Lot 343,
 Cariboo District

Scale: 1 Inch = 100 Feet

Plan No 14198

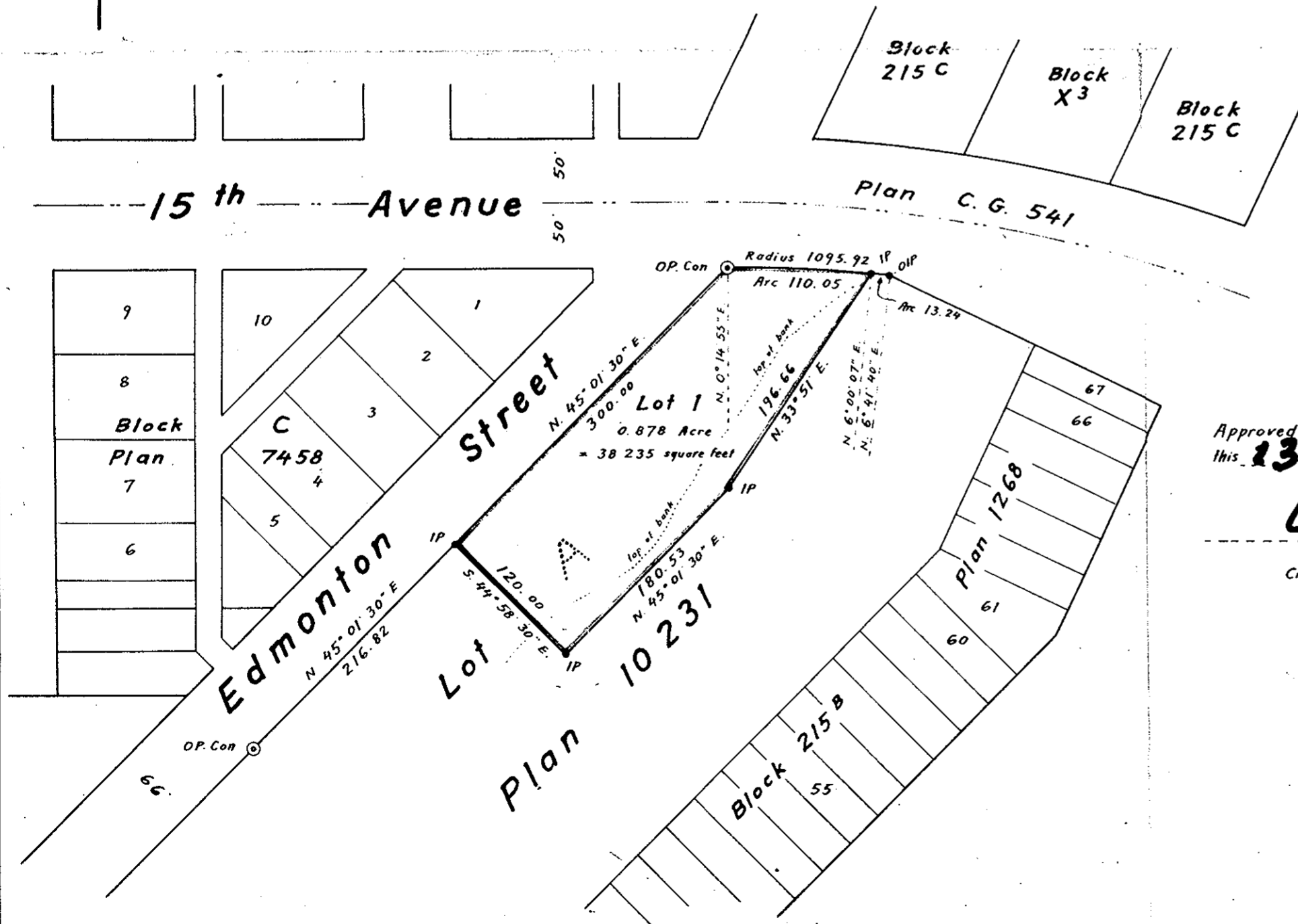
Deposited in the Land Registry Office at Kamloops, B.C.,
 this 10 day of June 1964

W. H. Macdonald
 Registrar

Legend

Bearings are astronomic and are derived
 from the southeasterly boundary of Edmonton
 Street as N. 45° 01' 30" E., Plan 10231.

Old standard concrete post found shown ⊙ O.P. Con
 Old iron post found shown • OIP
 Iron post set shown • IP



I, W.C. Serle, of the City of Prince George, British Columbia Land Surveyor,
 make oath and say that I was present at and did personally superintend the
 survey represented by this plan, and that the survey and plan are correct.
 The said survey was completed on the 14th day of February 1964

Sworn before me
 this 20th day of February 1964

W.C. Serle
 B.C.L.S.

W. H. Macdonald
 A Commissioner for taking affidavits
 within British Columbia

Approved under the Land Registry Act
 this 13 day of APR 1964

W. H. Macdonald

Approving Officer
 City of Prince George, B.C.

The Corporation of the
 City of Prince George, B.C.

W. H. Macdonald
 Mayor

W. H. Macdonald
 Clerk

McWilliam, Whyte, Serle & Goble
 1595 5th Ave., Prince George, B.C.

checked	F	S	D	X	Ref. No. 64 100 - G
45	1		1		