

PLAN OF SUBDIVISION OF D. L. 417 CARIBOO DISTRICT

PLAN # 1409

Approved.

THE GOVERNOR AND COMPANY
OF ADVENTURERS OF ENGLAND
TRADING INTO HUDSON'S BAY
BY THEIR ATTORNEY

Hudson's Bay Company's Office
Winnipeg, 1914.

Scale 100ft = 1 inch

PRINCE GEORGE

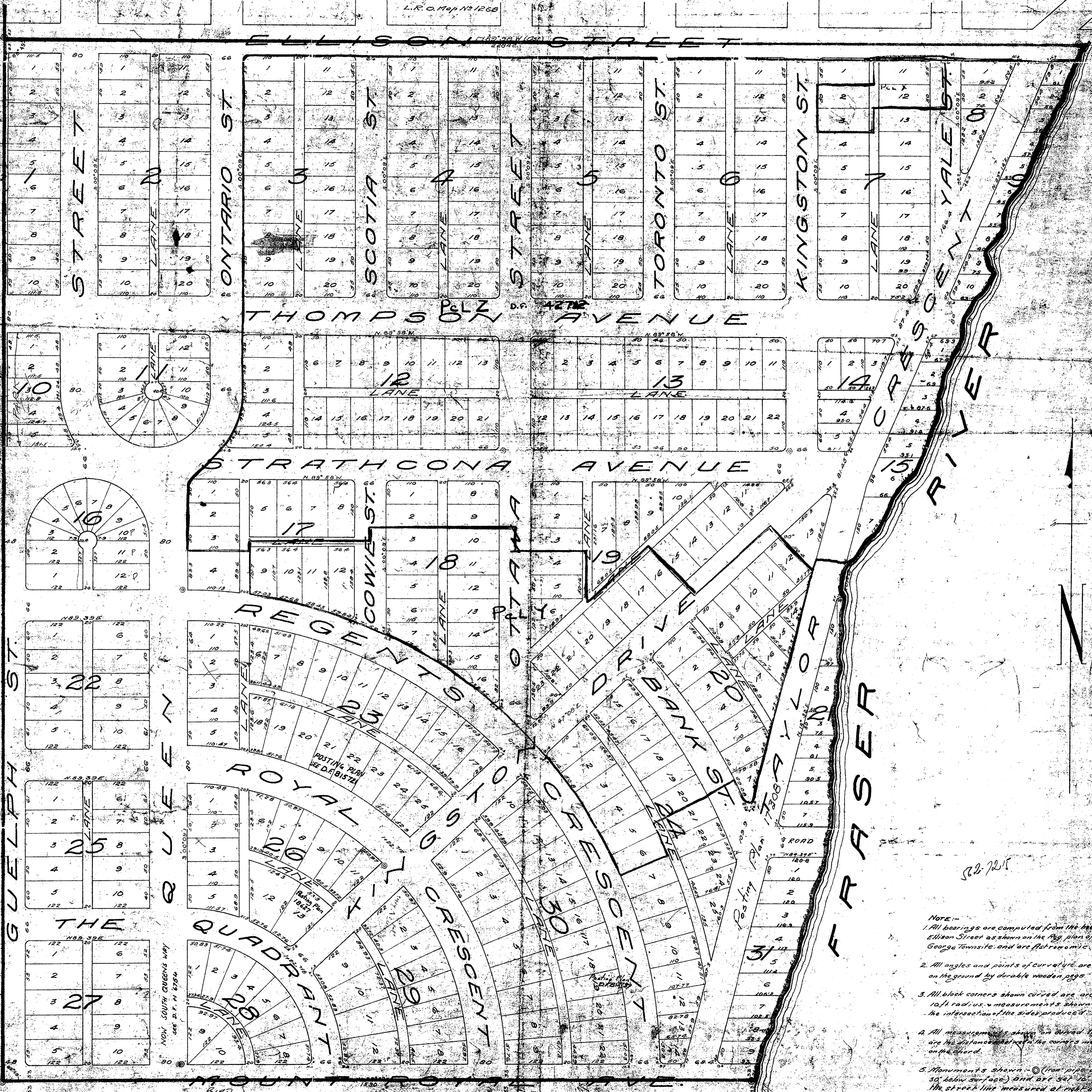
L.R. O. Map No 1268

U. F. Campbell, of the firm of Surveyors and
Public Land Surveyors, make oath that
he was present at the said parcel, and that the survey
represented by this plan and that the survey and plans are
correct.
The said survey was completed the 13 day of July
1914.

Under before me at the firm of Surveyors
George 17th day of July 1914.

J. F. Campbell
S. G. L.

M. W. [Signature]



- NOTE:-
1. All bearings are computed from the bearing of Ellison Street as shown on the City plan of Prince George Townsite and are not true.
 2. All angles and points of curvature are shown on the ground by durable wooden pegs.
 3. All block corners shown curved are arcs of 10 ft radius. Measurements shown are the intersection of the sides produced.
 4. All measurements shown are shown as shown on the ground and are not true.
 5. Monuments shown: (O) iron pipe 30' below surface and are set 10' from the street line measured at right angles.

SOUTH FORT GEORGE

L.R. O. Map No 1270