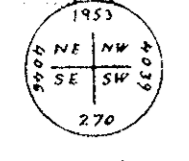


Plan of Subdivision of Part
of Parcel "A" of Amended Plan B 6366
 except Plans 6887, 8420, 9507, 9513, 9553, 11006,
 11471, 11610, 12076, 12655, 13458, and B 7753.
District Lot 4039, Cariboo District
 Scale: 1 Inch = 100 Feet

Deposited in the Land Registry Office at Kamloops, B.C.
 this 10 day of MARCH 1964

[Signature]
 Registrar

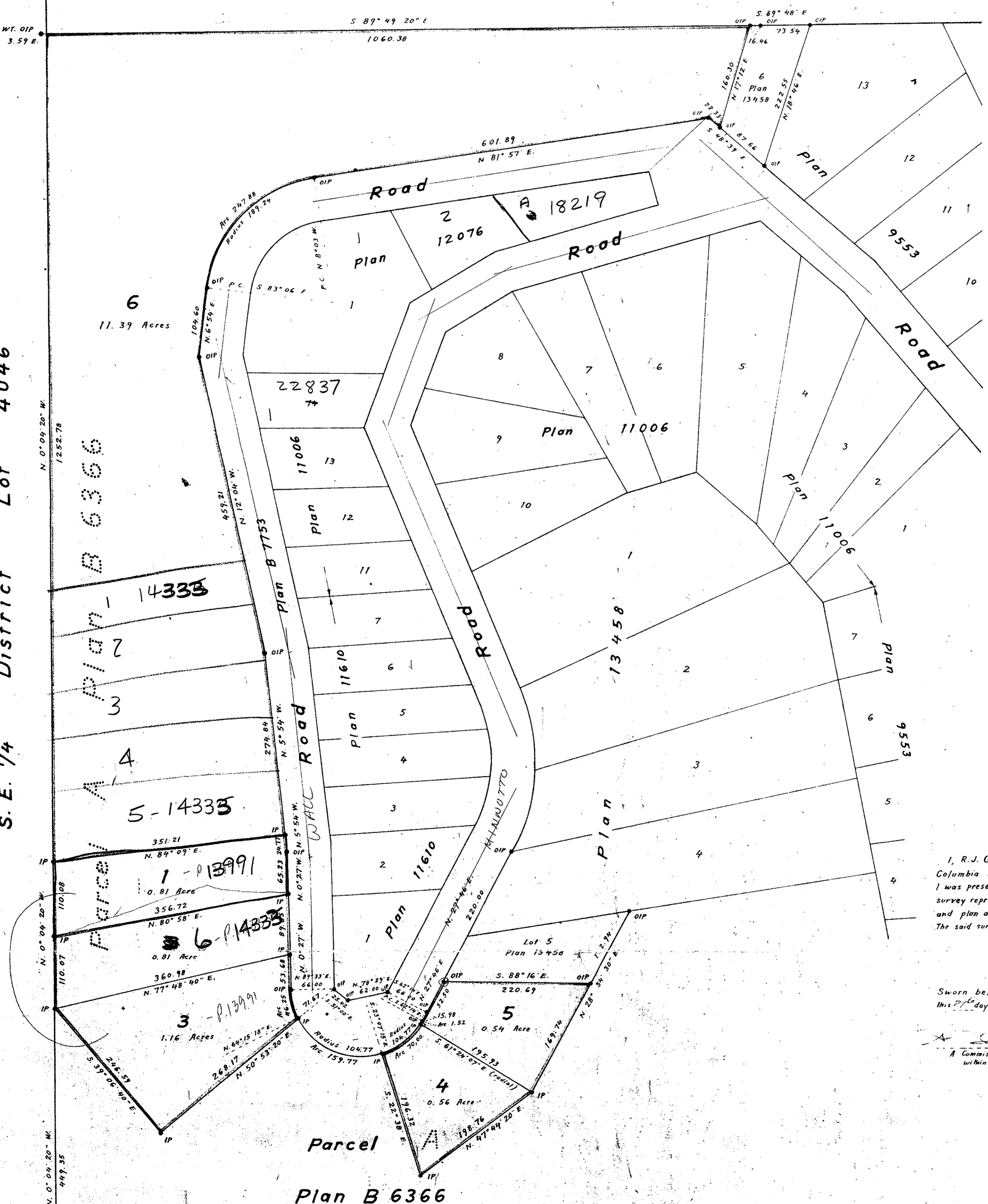


Legend
 Bearings are astronomic and are derived from
 the westerly boundary of Lots 4 and 5,
 Plan 13458.
 Old standard pipe post found shown • OPP
 Old iron post found shown • OIP
 Iron post set shown • IP
 WI denotes "witness"

Lot A
 Plan 9507

S.E. 1/4 District Lot 4046

Parcel A
 Plan B 6366



I, R.J. Goble, of the City of Prince George, British Columbia Land Surveyor, make oath and say that I was present at and did personally superintend the survey represented by this plan, and that the survey and plan are correct.
 The said survey was completed on the 17th day of January 1964

Sworn before me
 this 26th day of February, 1964

[Signature]
 A Commissioner for taking affidavits
 within British Columbia

Approved under the Land Registry Act
 this 26th day of February, 1964.

[Signature]
 Approving Officer
 Dept. of Highways, Prince George, B.C.

