

PLAN OF SUBDIVISION OF PART OF
THE N.E. 1/4 OF THE S.W. 1/4 OF
DISTRICT LOT 4040
CARIBOO DISTRICT - BRITISH COLUMBIA

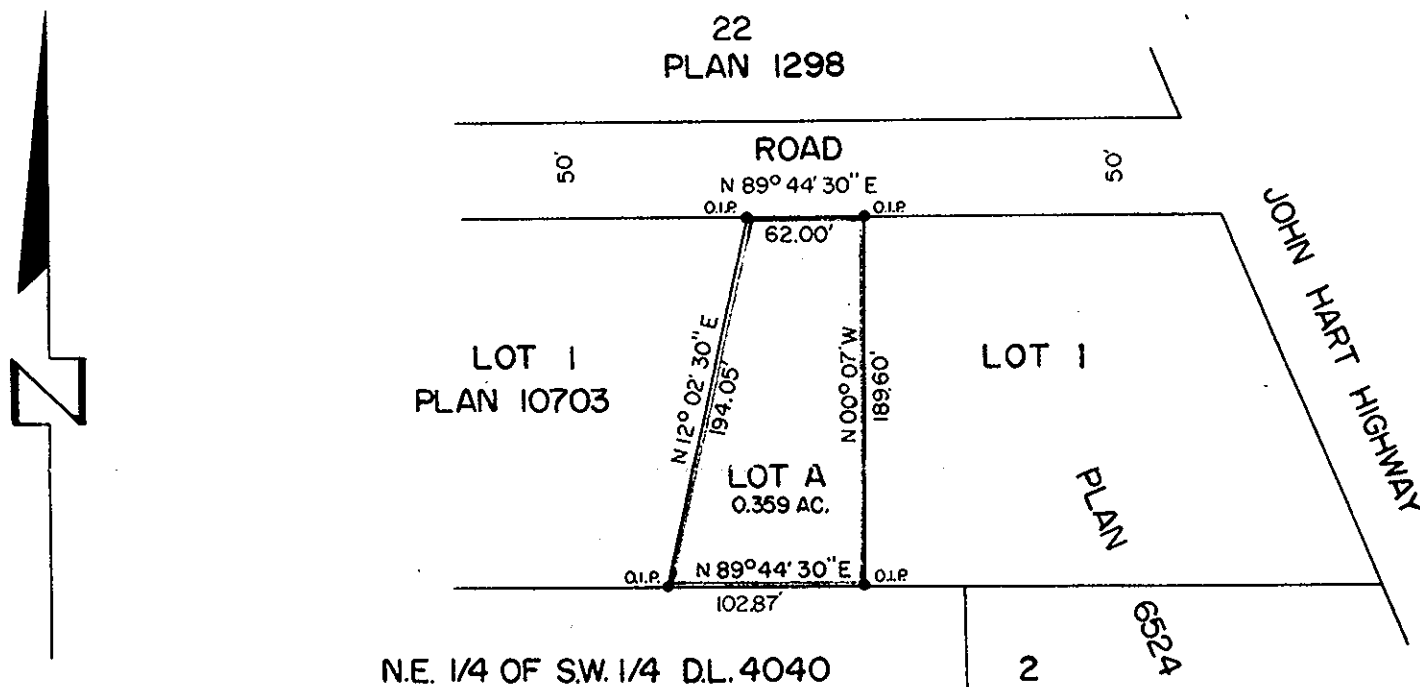
SCALE: 1"=100'

PLAN NO. **13968**
Deposited in the Land Registry
Office at Kamloops, B.C.
this 2 day of MARCH, 1964 A.D.

Registrar *[Signature]*

NOTE: Bearings are astronomic and are derived
from the east boundary of Lot 1, Plan 10703.

LEGEND: ● O.I.P. denotes an old iron pin found.



I, DONALD A. DUFFY, of the City of Prince George,
a British Columbia Land Surveyor, make oath and
say that I was present at and did personally superintend
the survey represented by this plan and that the
survey and plan are correct. The said survey was
completed on the 11th day of July, 1960 A.D.

Sworn before me
this 19th day of JULY, 1960.

[Signature]
B.C.L.S.

[Signature]
A Commissioner for taking Affidavits
within the Province of British Columbia.

Approved under the Land Registry Act
this 17th day of MAY, ~~1960~~ A.D.
1963

[Signature]
Approving Officer, Dept. of Highways.

REAPPROVED:

SHADY LANE MOTEL LTD.

[Signature]
President

[Signature]
Witness

[Signature]
Secretary

[Signature]
APPROVING OFFICER, DEPT. OF HIGHWAYS.
JANUARY 23rd, 1964.