

# Plan No 13954

Deposited under the Land Registry Office at Kamloops, B.C.  
this 24 day of FEB 1964

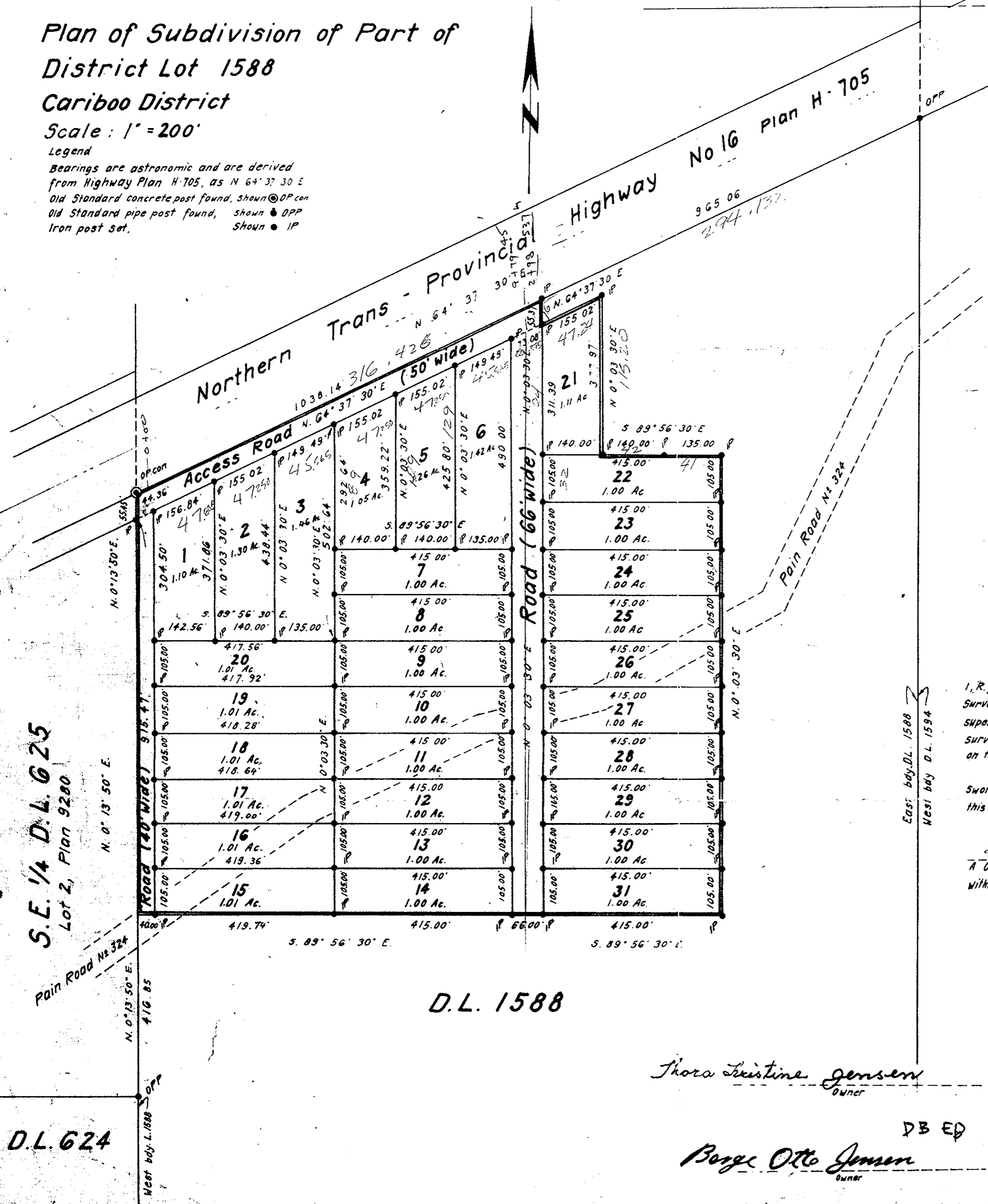
*Chapman*  
Registrar

## Plan of Subdivision of Part of District Lot 1588

### Cariboo District

Scale: 1" = 200'

Legend  
Bearings are astronomic and are derived  
from Highway Plan H-705, as N 64° 37' 30" E  
Old Standard concrete post found, Shown  $\odot$  OPP con  
Old Standard pipe post found, Shown  $\bullet$  OPP  
Iron post set, Shown  $\bullet$  IP



I, R. J. Goble, of the City of Prince George, British Columbia Land Surveyor, make oath and say that I was present and did personally superintend the survey, represented by this plan and that the survey and plan are correct. The said survey was completed on the 9th day of October 1963.

Sworn before me  
this 29th day of January 1964

*R. J. Goble*  
A Commissioner for taking affidavits  
within British Columbia

Approved under the Land Registry Act  
this 14th day of January 1964

*Neilson*  
Approving Officer, Dept. of Highways  
Prince George, B.C.

*Thora Kristine Jensen*  
owner

*McWilliam, Whyte, Serle & Goble*  
British Columbia Land Surveyors  
Witness to both signatures

S.E. 1/4 D.L. 625  
Lot 2, Plan 9280

D.L. 624

D.L. 1588

*Borge Otto Jensen*  
owner

DB ED  
*McWilliam, Whyte, Serle & Goble*  
British Columbia Land Surveyors

checked	1	5	0	2	1	10
1/2						

Ref No G3018