

Plan of Subdivision of Part of Parcel , Plan 10005,
 and of Lots 18 and 19, Block E, Plan 10005,
 District Lot 936, Cariboo District
 Scale 1" = 100'

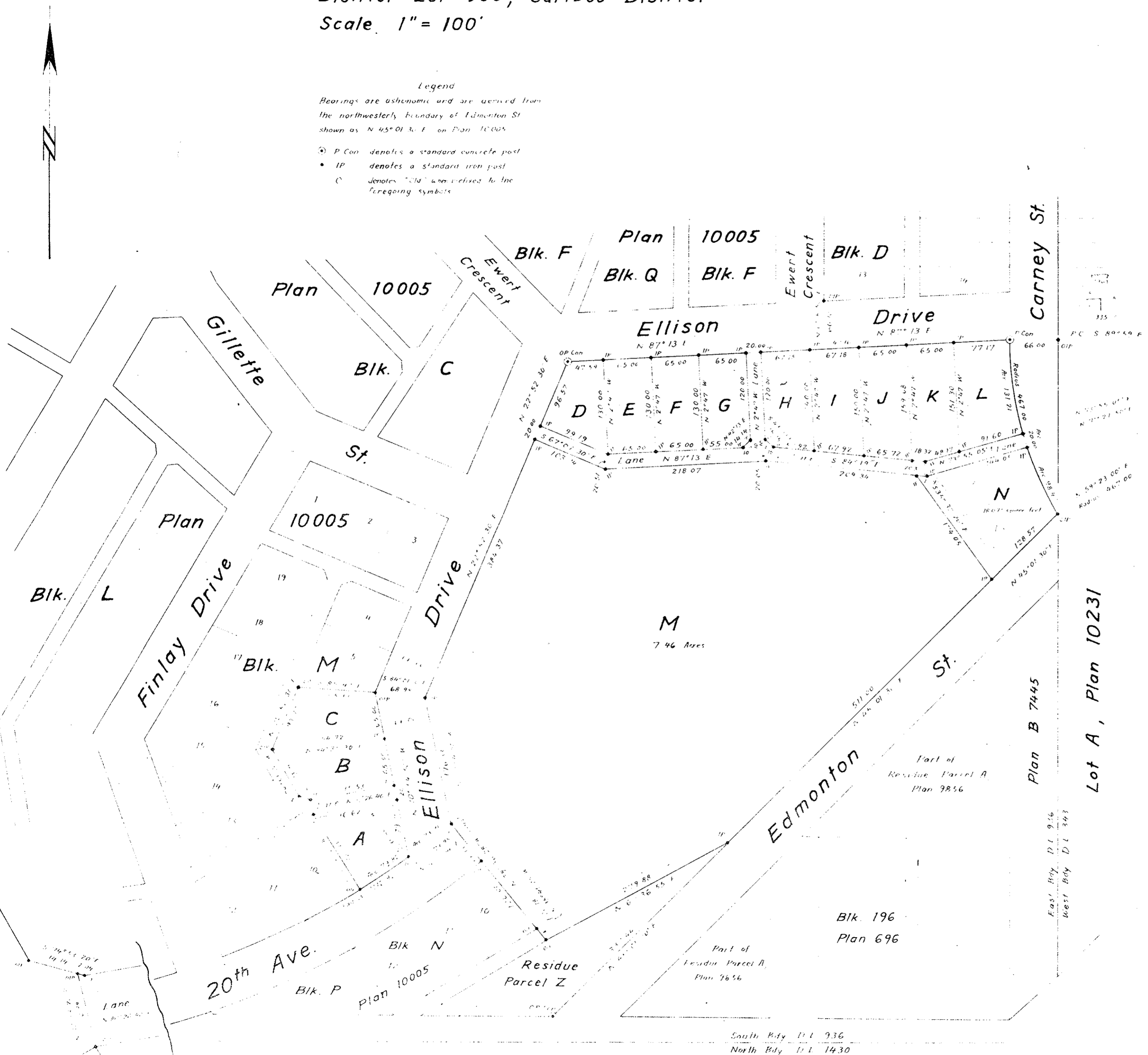
13869

Deposited in the Land Registry Office at Kamloops, B.C.,
 this day of 19

Registrar

Legend
 Bearings are astronomic and are derived from
 the northwesterly boundary of Edmonton St
 shown as N 45° 01' 30" E on Plan 10005

- ⊙ P Con denotes a standard concrete post
- IP denotes a standard iron post
- denotes "00" when referred to the foregoing symbols



I, W.C. Serle, of the City of Prince George, British Columbia Land Surveyor
 make oath and say that I was present at and did personally superintend the
 survey represented by this plan and that the survey and plan are correct.
 The said survey was completed on the 26th day of June 1963

Sworn before me
 this 18 day of September 1963

W.C. Serle
 P.C.S.

George S. ...
 A Commissioner for his jurisdiction
 within British Columbia

Approved under the Land Registry Act
 this 20 day of Sept 1963

Empress
 Approving Officer
 City of Prince George, B.C.

The Corporation of the City of Prince George, B.C.

Mayer

City Clerk

McWilliam, Whyte, Serle & Goble
 British Columbia Land Surveyors

Ref. No. 63100-22

Enlargement
 1/2" = 100'