

Plan of Subdivision of Lot 4, Plan 12129,  
District Lot 1593, Cariboo District  
Scale 1" = 200'

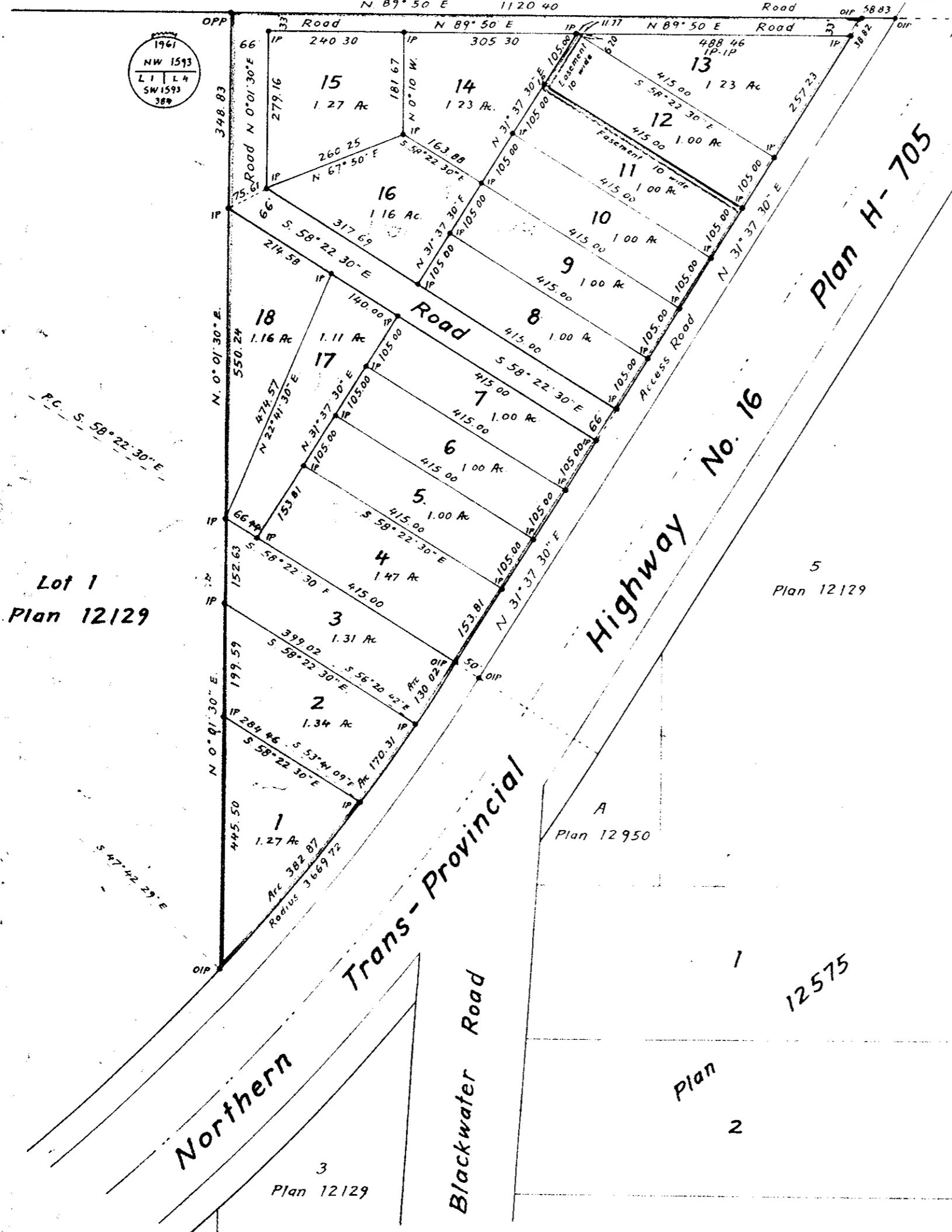
Plan No 13750

Deposited in the Land Registry Office at Kamloops, B.C.,  
this 6 day of DEC 1963

*W. J. ...*  
Registrar

Plan 1385  
Block 26

Plan 1385  
Block 25



I, W.C. Serle, of the City of Prince George, British Columbia Land Surveyor,  
make oath and say that I was present at and did personally superintend the  
survey represented by this plan and that the survey and plan are correct.  
The said survey was completed on the 21<sup>st</sup> day of August 1963

Sworn before me  
this 23<sup>rd</sup> day of August 1963

*W.C. Serle*  
B.C.L.S.

*[Signature]*  
A Commissioner for taking affidavits  
within British Columbia

Approved under the Land Registry Act  
this 1<sup>st</sup> day of November 1963.

*[Signature]*  
Approving Officer  
Dept of Highways, Prince George, B.C.

Legend  
Bearings are astronomic and are derived from  
the southeasterly boundary of Lot 4, Plan 12129.  
N 31° 37' 30" E  
Old standard pipe post shown • OPI  
Old iron post found shown • OIP  
Iron post set shown • IP  
Easement over Lots 11, 12, and 13  
shown outlined in green.

*J. Sykes*  
owner

*Warner Lepp*  
witness

McWilliam, Whyte, Serle & Goble  
British Columbia Land Surveyors

checked  F  S  D  R Ref. No. 63014