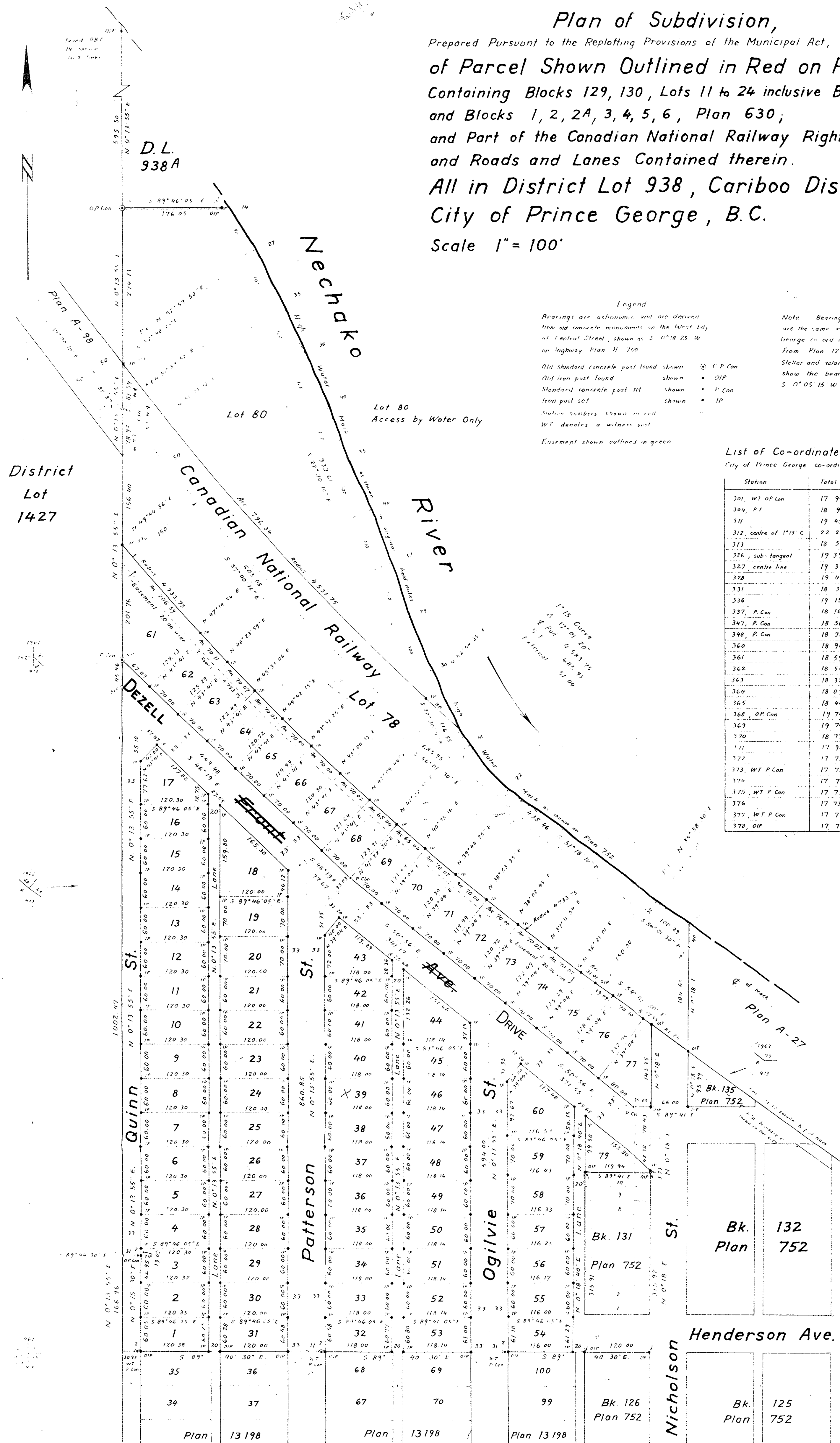


Plan of Subdivision,  
Prepared Pursuant to the Replotting Provisions of the Municipal Act,  
of Parcel Shown Outlined in Red on Reference Plan  
Containing Blocks 129, 130, Lots 11 to 24 inclusive Block 131, Block 136, Plan 752;  
and Blocks 1, 2, 2A, 3, 4, 5, 6, Plan 630;  
and Part of the Canadian National Railway Right-of-Way Plan A-27;  
and Roads and Lanes Contained therein.  
All in District Lot 938, Cariboo District.  
City of Prince George, B.C.

Scale 1" = 100'

Registered in the Land Registry  
Office at Kamloops, B.C.  
This day ..

Registrar



Legend  
Bearings are astronomic and are derived from old concrete monuments on the West side of Central Street, shown as S 0°18'25" W on Highway Plan H 700  
Old standard concrete post found shown  
Old iron post found shown  
Standard concrete post set shown  
Iron post set shown  
Station numbers shown in red  
WT denotes a witness post  
Easement shown outlined in green

Note: Bearings and co-ordinates shown on this plan are the same as those used on the City of Prince George co-ord grid and were originally derived from Plan 1268  
Stellar and solar observations at Central Street show the bearing "S 0°18'25" W" to be S 0°05'15" W true astronomic

List of Co-ordinates  
City of Prince George co-ordinate grid

Station	Total Lat	Total Dep
301, WT O.P. Can	17 906.39	2 759.29
302, P.I.	18 908.30	3 098.47
311	19 456.11	2 685.63
312, centre of 1°15' C.	22 214.86	6 346.24
313	18 505.35	3 653.59
314, sub-tangent	19 391.53	2 734.30
317, centre line	19 392.67	2 734.31
318	19 474.21	2 734.64
331	18 383.76	3 565.48
336	19 156.21	2 733.35
337, P. Can	18 166.34	3 632.30
347, P. Can	18 569.68	3 135.00
348, P. Can	18 954.45	2 732.53
360	18 908.99	2 732.35
361	18 598.55	3 057.40
362	18 544.89	3 113.57
363	18 327.88	3 378.46
364	18 095.72	3 666.93
365	18 446.44	3 734.75
368, O.P. Can	19 748.34	2 735.75
369	19 747.63	2 911.80
370	18 777.61	3 313.73
411	17 906.53	2 728.29
472	17 739.57	2 727.61
373, WT P. Can	17 739.39	2 758.53
374	17 737.72	3 053.91
375, WT P. Can	17 737.54	3 084.91
376	17 735.89	3 376.05
377, WT P. Can	17 735.71	3 407.05
378, O.P.	17 734.93	3 545.04

I, Werner Seignitz, of the city of Prince George, British Columbia Land Surveyor, make oath and say that I was present at and did personally superintend the survey represented by this plan, and that the survey and plan are correct. The said survey was completed on the 28th day of May 1963

Sworn before me this 30th day of May 1963

*D. Strawbridge*  
A Commissioner for taking oaths in the British Columbia

Approved under the Land Registry Act this 3rd day of June 1963

*C.W. Jones*  
Approved Officer  
City of Prince George, B.C.

Corporation of the City of Prince George, B.C.

*E. Nelson*  
Deputy City Clerk

W 167  
S 64  
ST 90

McWilliam, Whyte, Serle & Goble  
British Columbia Land Surveyors