

Plotted F.E.D.

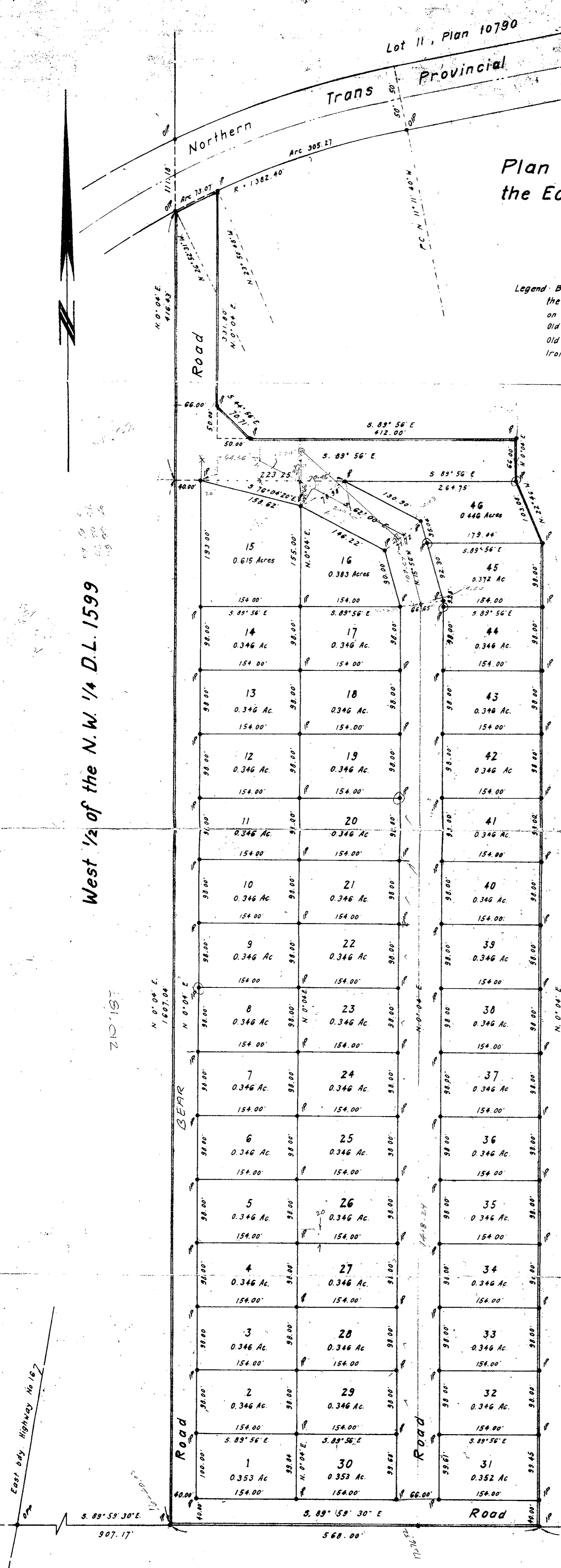
# Plan No. 13527

Deposited in the Land Registry Office at Kamloops, B.C. this 27 day of SEPT 1963.

*Shirley M. ...*  
Registrar

## Plan of Subdivision of Part of the East Half of the N.W. 1/4 of District Lot 1599 Cariboo District Scale: 1 Inch = 100 Feet

Legend: Bearings are astronomic and are derived from the South by of the N.W. 1/4 of D.L. 1599 as shown on the Highway Plan H-705  
Old Standard Pipe Posts found, shown • OPP  
Old Iron Posts found, shown • OIP  
Iron Posts set, shown • IP



I, W.C. Serle, of the City of Prince George, British Columbia Land Surveyor make oath and say that I was present at and did personally superintend the survey represented by this plan and that the survey and plan are correct. The said survey was completed on the 8 day of August 1963.

Sworn before me this 30 day of August 1963.

*W.C. Serle*  
B.C.L.S.

A Commissioner for taking affidavits within British Columbia

Approved under the Land Registry Act this 12 day of Aug 1963.

*Henry T. Lapreniere*  
Approving Officer,  
Dept. of Highways, Prince George, B.C.

*Henry T. Lapreniere*  
Owner

*R. E. ...*  
Witness to both signatures

S.W. 1/4 D.L. 1599

McWilliam, Whyte, Serle & Goble  
British Columbia Land Surveyors