

1338

1338  
A. Bruchat

# Subdivision of LOT 2440 Cariboo District B.C.

Witness  
*J. Brongue*  
*W. Ulmer*

Witness  
*E. H. Cooper*  
*G. McDonnell*

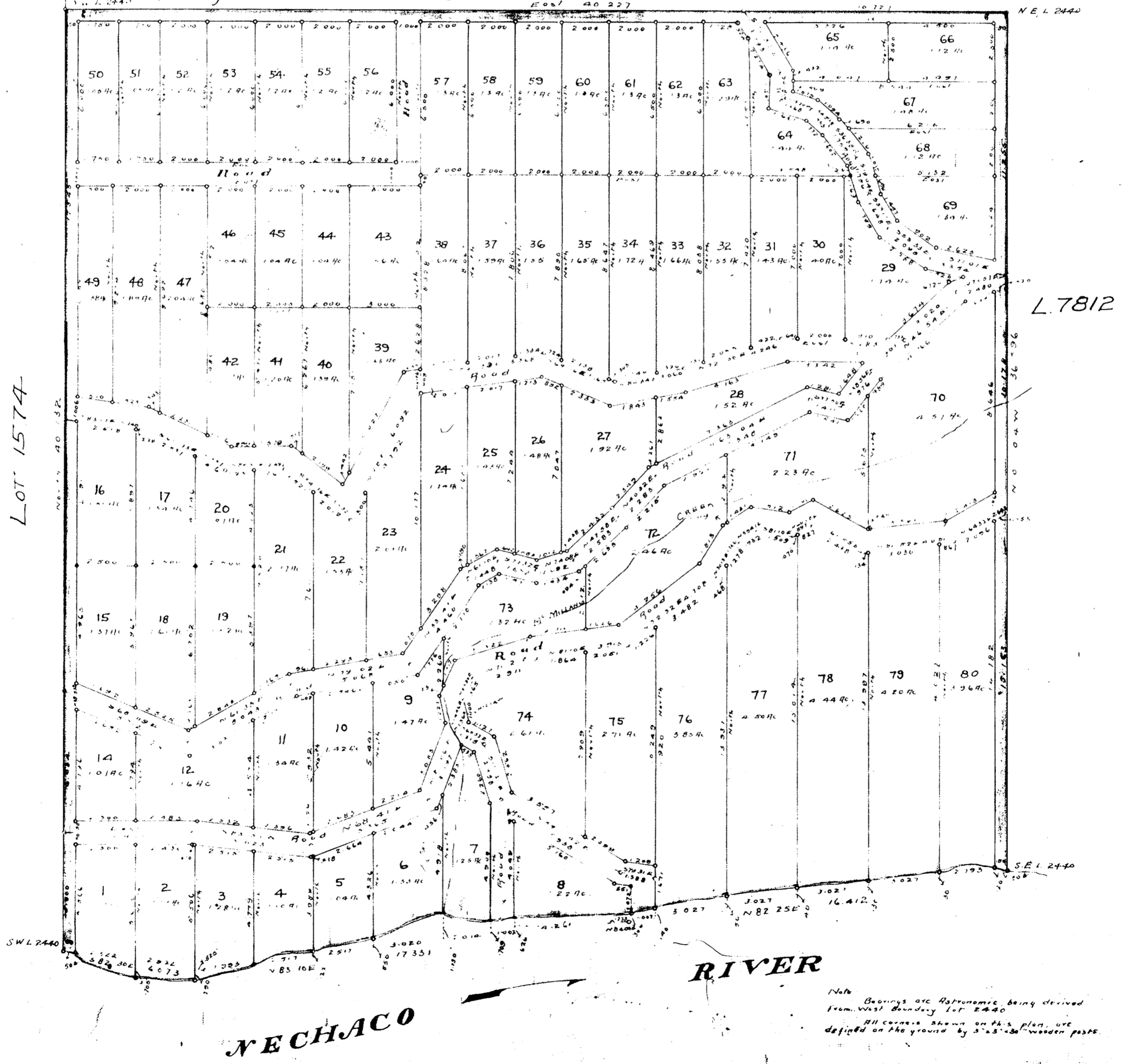
SCALE 4 CHAINS TO 1 INCH

I, D. M. Dougall of Fort George, B.C., a British Columbia Land Surveyor, make oath and say that I was present at, and did personally superintend the survey represented by this plan, and that the said survey and plan are correct. The said survey was completed on the 20<sup>th</sup> day of Nov, A.D. 1913.

Sworn before me this 24<sup>th</sup> day of Nov, A.D. 1913.

*D. J. Perkins J.P.*

*D. M. Dougall*  
P.L.S.  
Lot 7812



Note Bearings are Astronomic being derived from West Boundary Lot 2440. All corners shown on this plan are defined on the ground by 3" x 3" x 36" wooden posts.