

PLAN OF SUBDIVISION OF PART OF
DISTRICT LOT 1545 CARIBOO DISTRICT.

Scale: 1" = 200'

Bearings are astronomic and were derived from old iron pins on the West Bdy. of D.L. 1545 shown as N. 0° 10' W. on Plan. 9998.
Old iron pins found shown
New iron pins set shown

- OIP
- IP

PLAN 13257

Deposited in the Land Registry Office at Kamloops, B.C. this 5th day of JUNE 1963

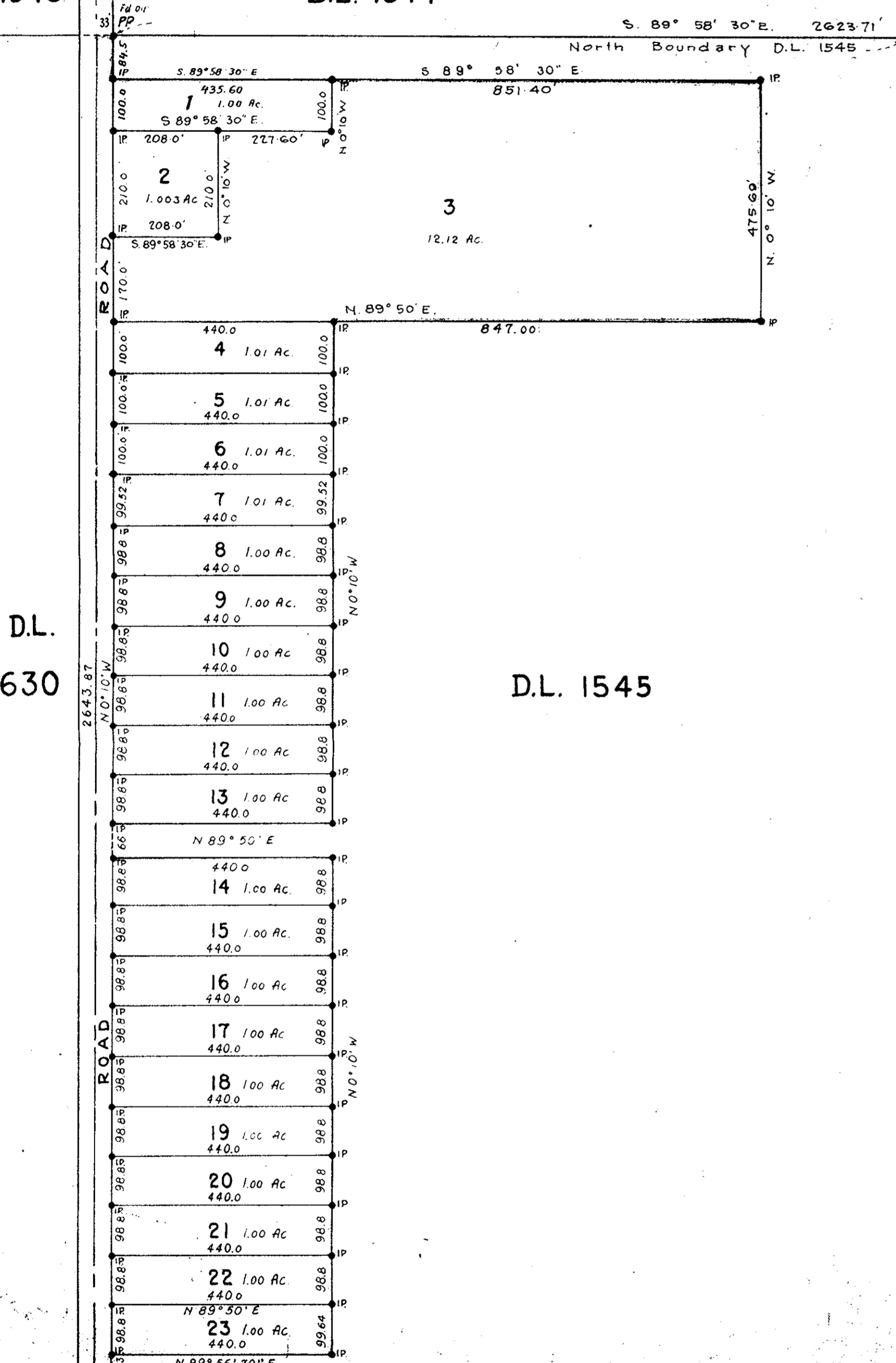
[Signature]
Registrar

D.L. 1543

D.L. 1544

N.W. 1/4
D.L. 634

S.W. 1/4
D.L. 634



D.L. 630

D.L. 1545

Inspected this 12th day of Sept. 1960

[Signature]
B.C.L.S.

Re-inspected this 29th day of May 1961

Re-inspected March 14th 1963

I, R.J. Goble of the city of Prince George, British Columbia Land surveyor, make oath and say that I was present at and did personally superintend the survey represented by this plan and that the survey and plan are correct. The said survey was completed on the 15th day of January 1960

[Signature]
S.C.L.S.

Sworn before me at the city of Prince George, B.C. this 27th day of January 1960

A Commissioner for taking Affidavits within British Columbia.

[Signature]
Owner

[Signature]
Witness

Approved under the Land Registry Act this 11th day of MARCH 1960

[Signature]
Approving Officer, Dept. of Highways, Victoria, B.C.

Re-approved under the Land Registry Act this 1st day of NOVEMBER 1960

[Signature]
Approving Officer, Dept. of Highways, Victoria, B.C.

Re-approved under the Land Registry Act this 27th day of JUNE 1961

[Signature]
Approving Officer, Dept. of Highways, Prince George, B.C.

REAPPROVED

[Signature]
APPROVING OFFICER, DEPT. OF HIGHWAYS
APRIL 8th, 1963

McWilliam Whyte Serle & Goble
B.C. Land Surveyors

REF. No. 60103

63 59 58 57 56
P L A N 9998