

PLAN OF SUBDIVISION OF
 LOTS 1 TO 11 INCL., AMENDED LOTS 12 AND 13, LOTS 14 TO 24 INCL., BLOCK 46,
 LOTS 10 TO 24 INCL., LOTS A AND B, BLOCK 47,
 PART OF AMENDED LOT 13, LOTS 14 TO 24 INCL., BLOCK 48, LOTS 13 TO 24 INCL., BLOCK 73,
 PART OF AMENDED LOTS 1 AND 24, BLOCK 74, PARTS OF LOTS A AND B, BLOCK 75,
 LOTS 18 TO 24 INCL., BLOCK 78, LOT B, LOTS 13 TO 24 INCL., BLOCK 103,
 LOTS 1 TO 12 INCL., LOTS 15 TO 24 INCL., BLOCK 104, LOTS 1 TO 24 INCL., BLOCK 105,
 LOTS 1 TO 24 INCL., BLOCK 106, LOTS 1 TO 10 INCL., LOTS 13 TO 24 INCL., BLOCK 107,
 LOTS 13 TO 22 INCL., BLOCK 108, LOTS 13 TO 24 INCL., BLOCK 126,
 LOTS 1 TO 24 INCL., BLOCK 127, LOTS 1 TO 24 INCL., BLOCK 128.

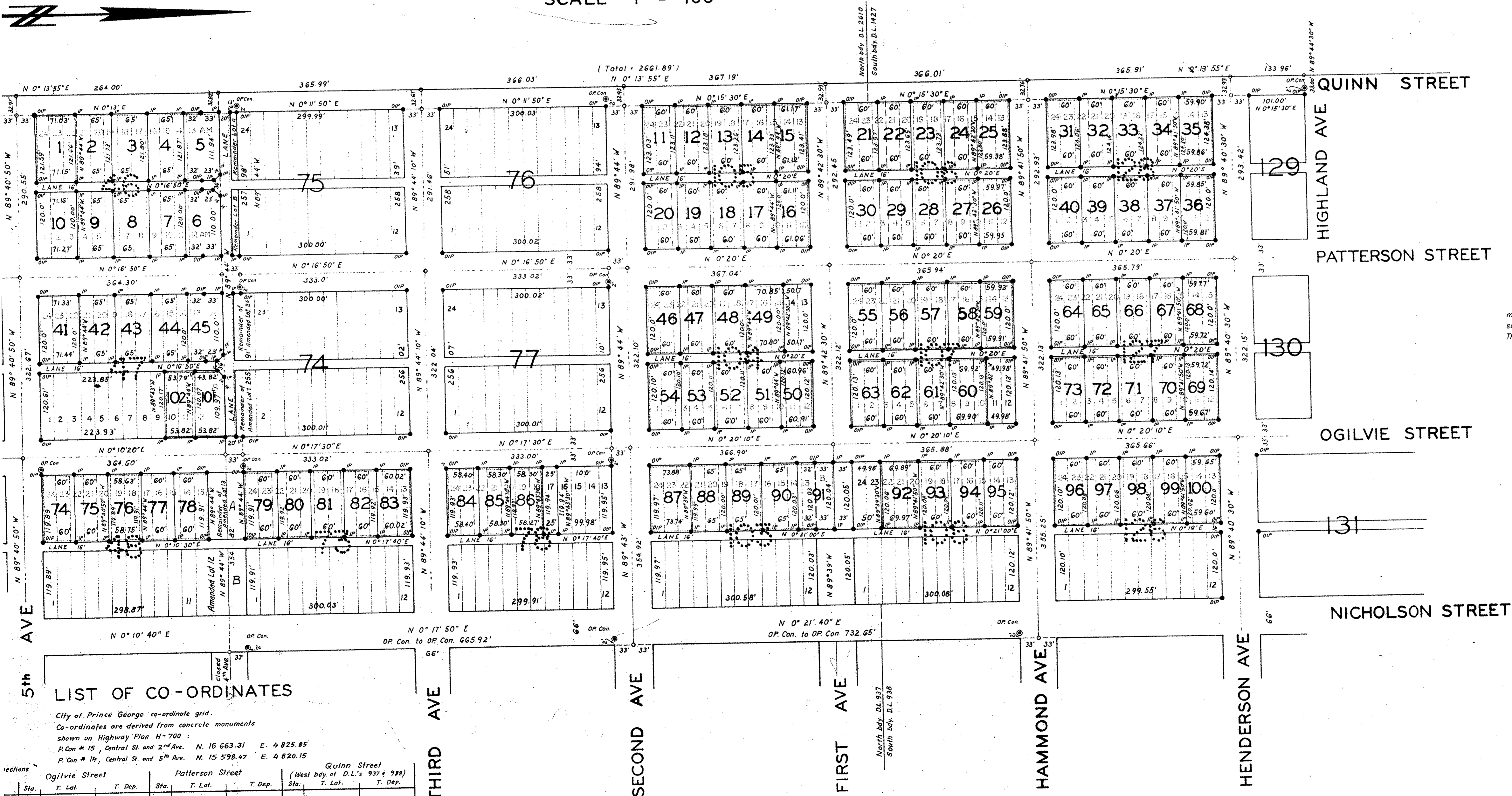
13198

Deposited in the Land Registry Office at Kamloops, B.C.
 this _____ day of _____ 1962

Registrar

ALL IN PLAN 752, DISTRICT LOTS 937 AND 938, CARIBOO DISTRICT.

SCALE 1" = 100'



I, W.C. Serie, of the city of Prince George, British Columbia Land Surveyor,
 make oath and say that I was present at, and did personally superintend the
 survey represented by this plan and that the survey and plan are correct.
 The said survey was completed on the _____ day of _____ 1962.

B. C. L. S.

Sworn before me at the city of Prince George
 this _____ day of _____ 1962

A Commissioner for taking affidavits
 within British Columbia

Approved under the Land Registry Act
 this _____ day of _____ 1962

Approving Officer
 City of Prince George, B.C.

LIST OF CO-ORDINATES

City of Prince George co-ordinate grid.
 Co-ordinates are derived from concrete monuments
 shown on Highway Plan H-700:
 P. Con # 15, Central St. and 2nd Ave. N. 16 663.31 E. 4 825.85
 P. Con # 14, Central St. and 5th Ave. N. 15 598.47 E. 4 820.15

Sta.	Ogilvie Street			Patterson Street			Quinn Street (West body of D.L.'s 937 & 938)		
	T. Lat.	T. Dep.	Sta.	T. Lat.	T. Dep.	Sta.	T. Lat.	T. Dep.	
214	15 573.85	3 364.98	207	15 575.65	3 042.32	222	15 577.25	2 718.87	
215	15 938.45	3 366.07	208	15 939.95	3 044.10	223	15 941.45	2 720.34	
216	16 304.47	3 367.93	209	16 305.95	3 045.89	224	16 307.44	2 721.82	
217	16 670.47	3 369.81	210	16 671.96	3 047.71	225	16 673.46	2 723.30	
218	17 037.37	3 371.96	211	17 039.00	3 049.84	226	17 040.65	2 724.79	
219	17 403.23	3 374.10	212	17 404.94	3 051.97	227	17 406.66	2 726.27	
220	17 768.89	3 376.24	213	17 770.72	3 054.10	228	17 772.57	2 727.75	