

# PLAN OF SUBDIVISION OF PART OF THE N.E. 1/4 OF DISTRICT LOT 634, CARIBOO DISTRICT.

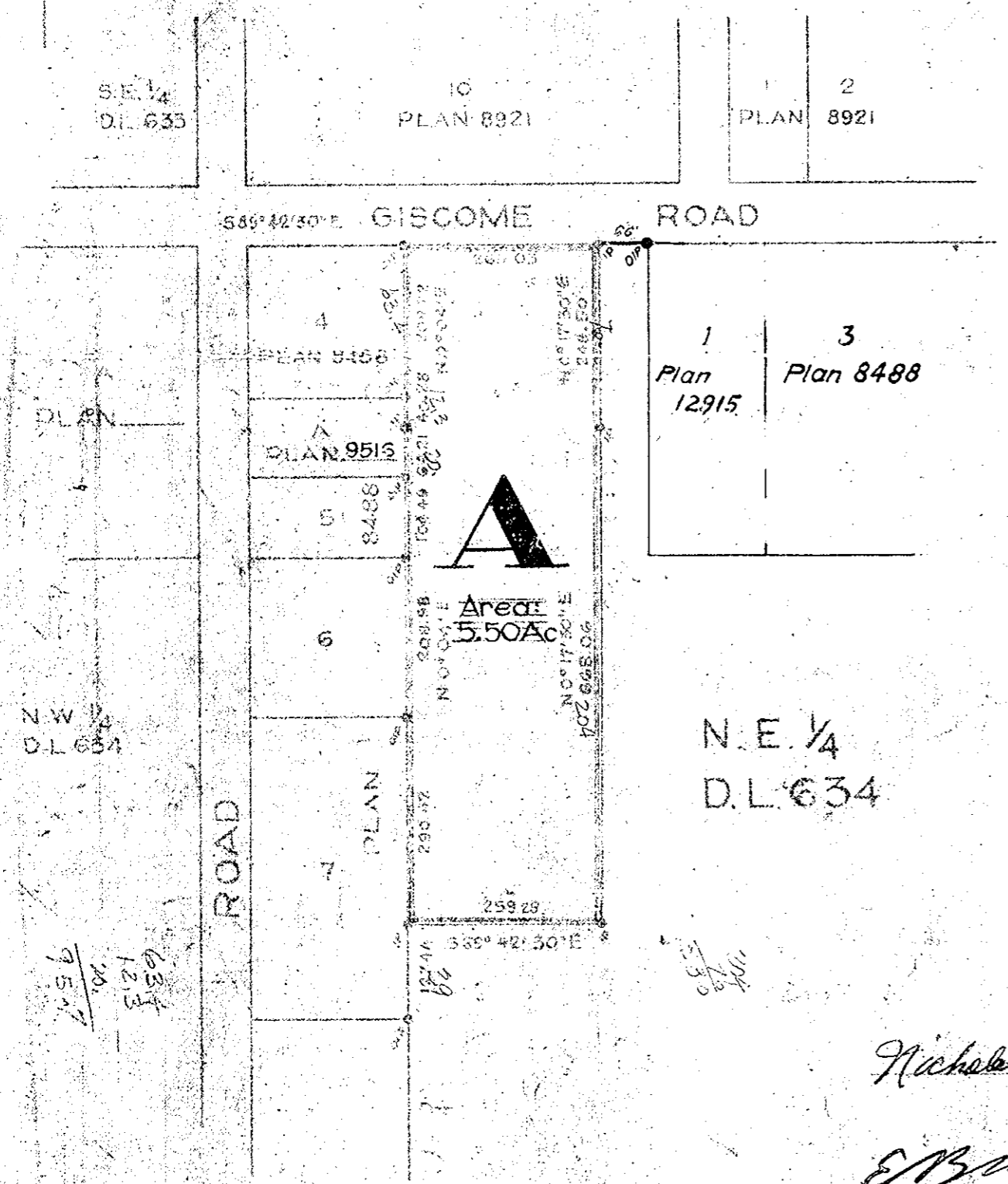
## PLAN 13121

Deposited in the Land Registry Office at Kamloops B.C. this 16<sup>th</sup> day of APRIL 1963.

*Charles Stewart*  
Registrar

Scale: 1" = 200'  
Legend

Bearings are astronomic and are derived from the South Boundary of Giscome Road, Plan 8956  
Old iron posts found, shown: • OIP  
Iron posts set, shown: • IP



N.E. 1/4  
D.L. 634

I, R. J. Goble, of the city of Prince George, British Columbia Land Surveyor make oath and say that I was present at and did personally superintend the survey represented by this plan and that the survey and plan are correct.  
The said survey was completed on the 10<sup>th</sup> day of May 1962.

*R. J. Goble*  
B.C.L.S.

Sworn before me at the city of Prince George B.C. this 28<sup>th</sup> day of May 1962

*Stewart*  
A Commissioner for taking affidavits within British Columbia

Approved under the Land Registry Act this 16<sup>th</sup> day of JULY 1962

*W. H. ...*  
Approving Officer, Dept. of Highways

*Nicholas ...* Owner

*E. B. ...* Witness

REAPPROVED:  
*[Signature]*  
APPROVING OFFICER, DEPT. OF HWYS.  
FEB. 22, 1963.

REAPPROVED:  
*[Signature]*  
APPROVING OFFICER, DEPT. OF HWYS.  
SEPTEMBER 26, 1962

MCWILLIAM, WHYTE, SERLE & GOBLE  
BRITISH COLUMBIA LAND SURVEYORS  
REF NO. 62047