

ROTTED, EB
PLAN 12575

Deposited in the Land Registry Office at Kamloops, B.C.
this 18TH day of SEPT. 1962.

Chapman
Registrar

NW 1/4 DL 1593
Plan 1385

Plan of Subdivision
of Part of Lot 5, Plan 12129,
District Lot 1593
Cariboo District
Scale 1" = 200'

Legend: Bearings are astronomic and are derived from
Plan No 12129 and Highway Plan H-705.
Old pipe post found, shown • OPP
Old iron posts found, shown • OIP
Iron posts set, shown • IP

I, W.C. Serle, of the city of Prince George, British Columbia Land Surveyor,
make oath and say that I was present at, and did personally superintend
the survey represented by this plan and that the survey and plan are correct.
The said survey was completed on the 12th day of June 1962.

W.C. Serle
B.C.L.S.

Sworn before me at the city of Prince George
this 3rd day of July 1962.

W.C. Serle
A Commissioner for taking affidavits
within British Columbia

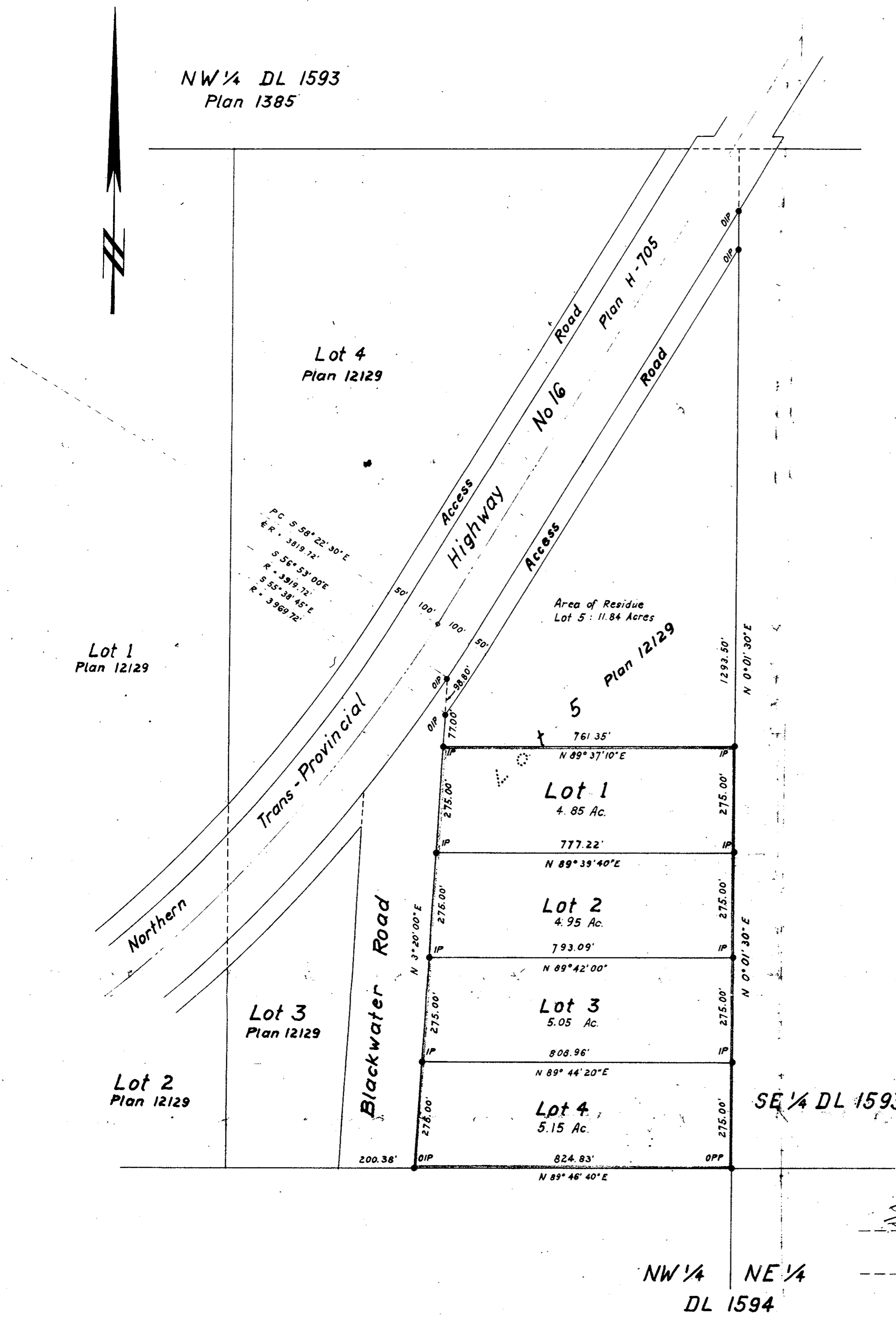
Approved under the Land Registry Act
this 2ND day of AUG. 1962.

W.C. Serle
Approving Officer
Dept. of Highways, Prince George, B.C.

J. Sykes
owner
W.C. Serle
Witness

Mc William, Whyte, Serle & Goble
British Columbia Land Surveyors

Reg. No 62006



NW 1/4 NE 1/4
DL 1594

SE 1/4 DL 1593