

Plan of Subdivision of Lot 10 and Part of
 Lot B Block 285, Plan 1268
 District Lot 343, Cariboo District.

Scale 1" = 50'

Legend: Bearings are astronomic and are derived from
 the centre line of 17th Avenue shown as East on Plan 1268
 Old concrete monuments found, shown \odot OP Con
 Iron posts set, shown \bullet IP

PLAN 12517

Deposited in the Land Registry Office at Kamloops B.C.
 this 28th day of Aug. 1962.

[Signature]
 Registrar

17th Avenue

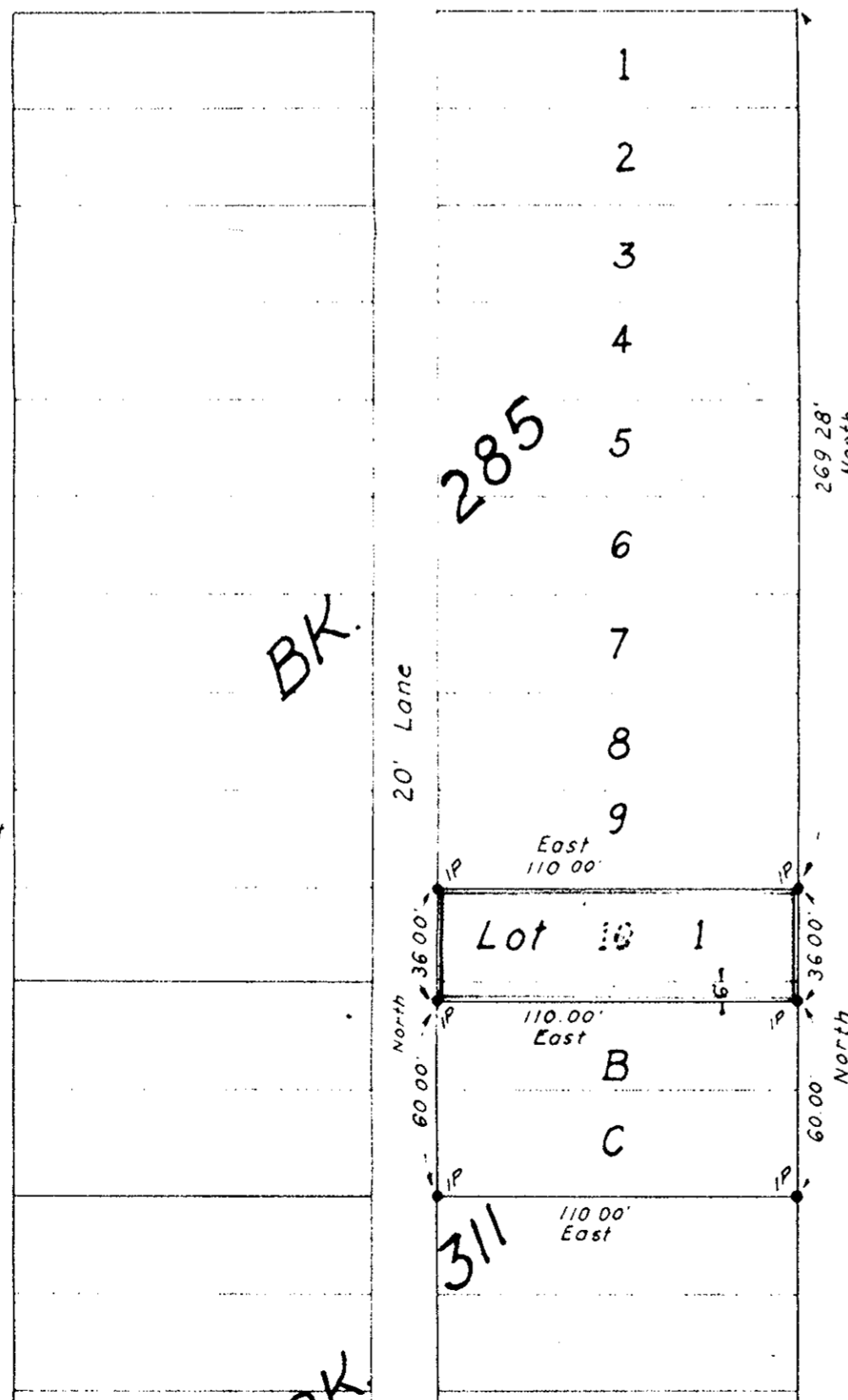
Centre Line of 17th Avenue
 East 9.8 00 339 00

Centre Line of Oak Street

1056.51
 North

Norwood St.

This distance is 2.09 short
 against Plan 1268, Length
 of 200' Block in proportion
 thereto 299.28



Maple St.

Centre Line of Larch Street

I, R. J. Goble of the city of Prince George, British Columbia Land Surveyor
 make oath and say that I was present at and did personally superintend the
 survey represented by this plan and that the survey and plan are correct
 The said survey was completed on the 22nd day of June 1962.

[Signature]
 B.C.L.S.

Sworn before me
 this 3 day of July 1962

[Signature]
 A Commissioner for taking affidavits
 within British Columbia.

Approved under Land Registry Act
 this 2 day of July 1962.

[Signature]
 Approving Officer for the Corporation
 of the city of Prince George, B.C.

Mc William, Whyte, Serle & Goble
 British Columbia Land Surveyors

Ref. No 62108

S.E. Corner
 Block 337
 29 00'
 O.P. Con.
 WT 4.00' N
 4.00' W

S.E. Corner
 Block 340
 29 00'
 O.P. Con.
 WT 4.00' N
 4.00' W