

PLAN OF SUBDIVISION OF PART OF PARCEL Y,
 PLAN 649, DISTRICT LOT 777, AND PART OF
 PARCEL Z, PLAN 1085, DISTRICT LOT 1430,
 CARIBOO DISTRICT.

PLAN 12435 ^{PLOTTED (HK)}

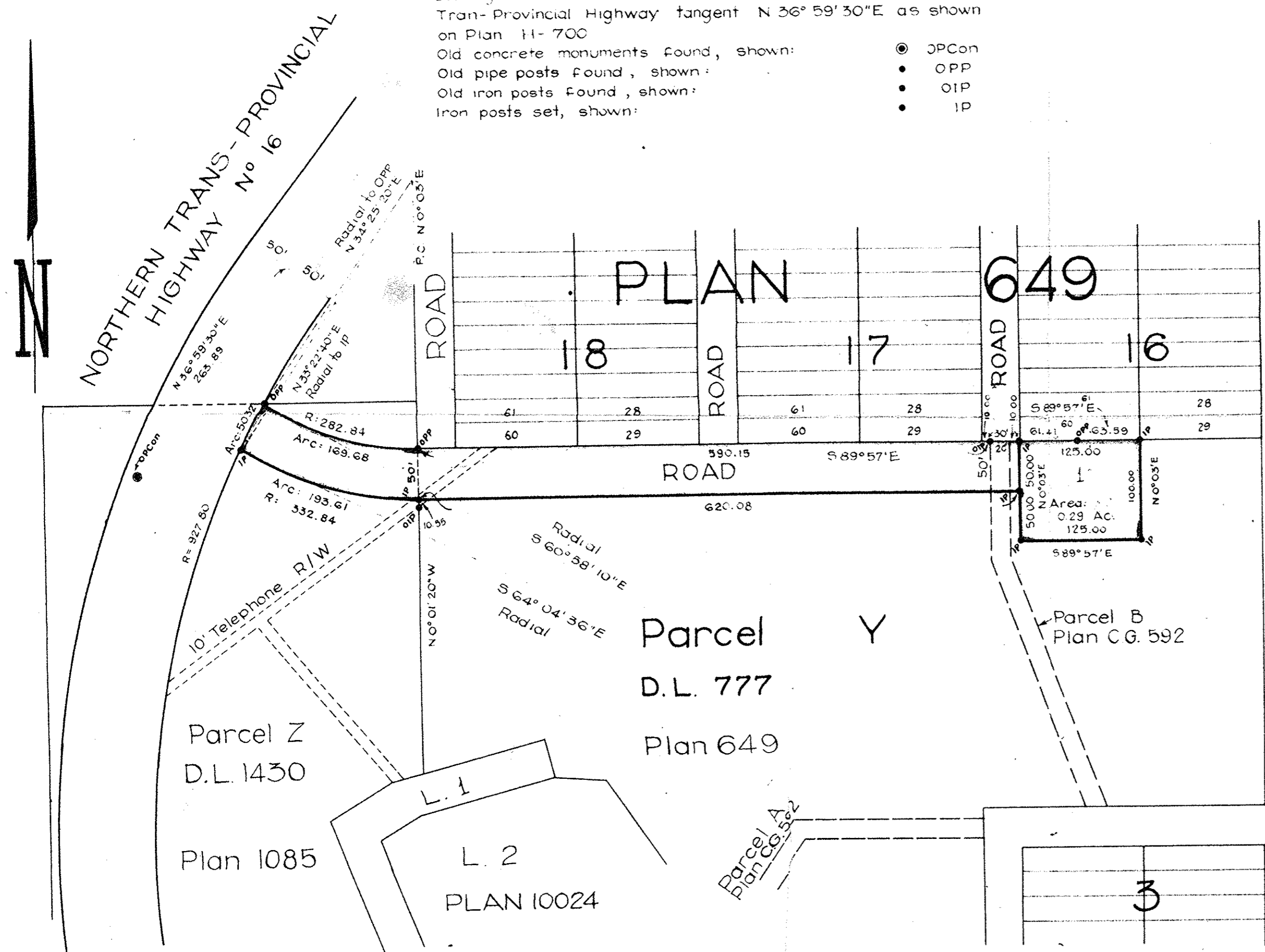
Deposited in the Land Registry Office at Kamloops B.C.
 this 2ND day of Aug. 1962.

[Signature]
 Deputy Registrar

Scale: 1" = 100'

Legend

- Bearings are astronomic and are derived from the Northern
 Tran-Provincial Highway tangent N 36° 59' 30" E as shown
 on Plan H-700
- Old concrete monuments found, shown: ● JPCon
 - Old pipe posts found, shown: ● OPP
 - Old iron posts found, shown: ● OIP
 - Iron posts set, shown: ● IP



I, R.J. Goble of the city of Prince George, British Columbia Land
 Surveyor, make oath and say that I was present at and did personally
 superintend the survey represented by this plan and that the survey
 and plan are correct. The said survey was completed on the 4th
 day of June 1962

[Signature]
 B.C.L.S.

Sworn before me,
 this 26th day of June 1962

[Signature]
 A Commissioner for taking affidavits
 within British Columbia

Approved under the Land Registry Act
 this 2ND day of JUNE 1962

Approving Officer for the Corporation
 of the city of Prince George

I hereby certify that this is a true copy of the Official Plan on deposit in the
 Department of Lands, Forests and Water Resources and numbered Plan 11 Tube 637.

[Signature]
 Acting Surveyor General, Victoria B.C.
 12th July, 1962.

MCWILLIAM · WHYTE · SERLE & GOBLE
 BRITISH COLUMBIA LAND SURVEYORS
 REF N° 62100-C