

— PLAN OF SUBDIVISION —  
 — OF —  
— LOT 905, CARIBOO DIST —  
 — BEING —  
— MC. BAIN'S ADDITION TO FORT GEORGE —

SCALE 200 FEET = ONE INCH.

N.B. All angles defined on Ground by wooden posts.

1926

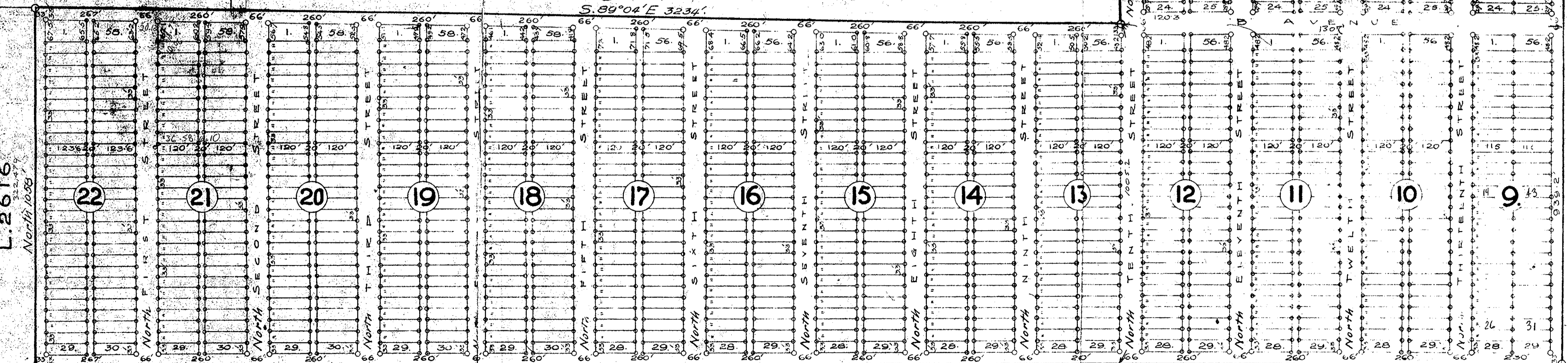
T.L. 34244

I, J. H. Gray of Victoria, a British Columbia Land Surveyor,  
 make oath and say I was present and did personally  
 superintend the Survey represented by this Plan,  
 and that the said Survey and plan are correct.  
 The Survey was completed on the 31<sup>st</sup> day of Decr 1912

Sworn before me this  
 7<sup>th</sup> day of Jan'y 1913

*J. H. Gray*  
 J. H. Gray

S. 89° 04' E 323.4'



L. 2616

L. 1600

L. 2003

L. 1433

West 1320'

L. 753

N.B. The Boundary line between lots 905 & 753  
 is assumed as a Meridian, whence all bearings were  
 derived.