

PLAN OF SUBDIVISION OF
PART OF DISTRICT LOT 10224, EXCEPT PLANS 11552, 11808, AND 11974

PLAN NO. 12187

CARIBOO DISTRICT Scale: 1" = 200'

Bearings are astronomic, and were derived from Plan 11552.

Old iron pins found shown
New iron pins set shown
Pipe posts set, shown

Deposited in the Land Registry office at Kamloops, this 3rd day of APRIL 1962.

[Signature]
Registrar

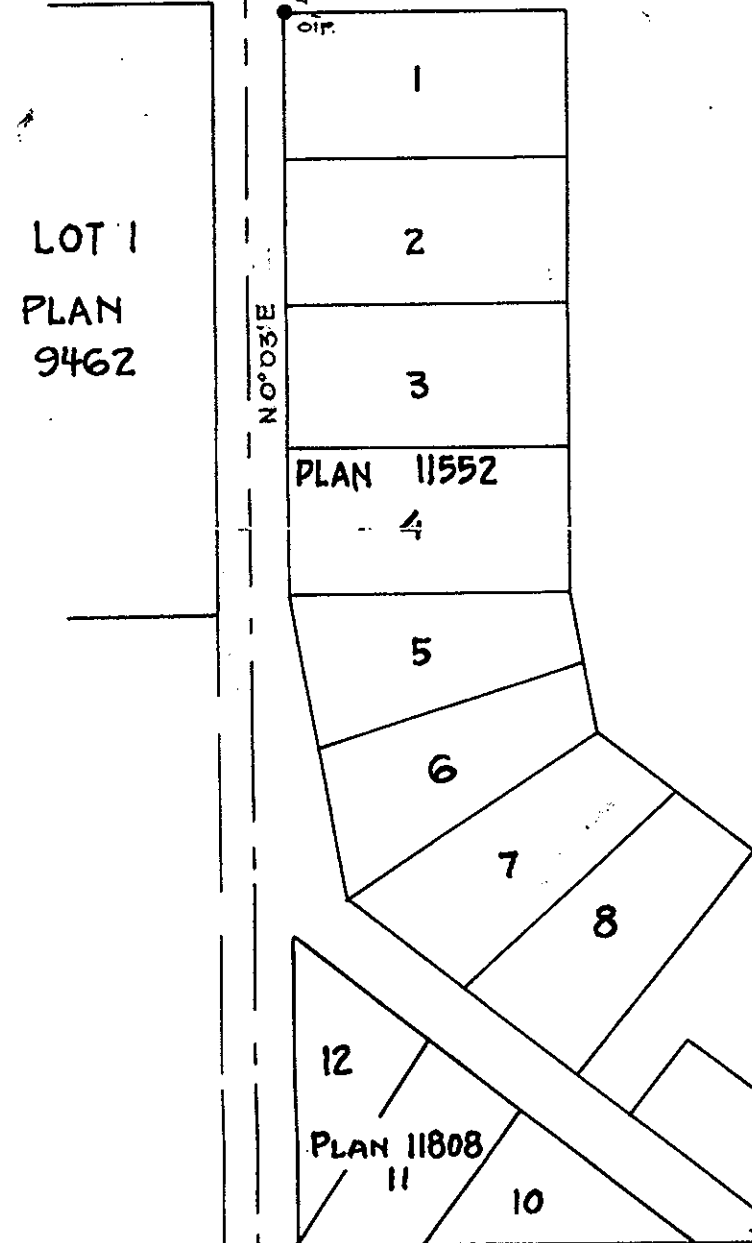
D.L. 10223

D.L. 10222

S. 89° 59' 40" E.
1980.75'

S. 89° 59' 40" E.
627.25'

1962
10222
10224
38A



D.L. 10224
Area of residue 45.01 Acres.

BTs:
6" Birch N. 65° W. 25'
4" Birch N. 18° W. 13'

LOT 2
14.16 Acres

D.L. 2609

I, R. J. Goble of the city of Prince George, British Columbia, Land surveyor, make oath and say that I was present at and did personally superintend the survey represented by this plan, and that the survey and plan are correct... The said survey was completed on the 6th of January 1962.

[Signature]
B.C.L.S.

Sworn before me at the city of Prince George, B.C. this 9th day of FEBRUARY 1962.

[Signature]
A Commissioner for taking affidavits within British Columbia.

[Signature]
owner
Witness

D.L. 10225

S. 89° 58' E.
684.44'

S. 89° 58' E.
660.25'

1962
10224
10225
2609
38A

CRANBROOK HILL ROAD

Approved under the Land registry Act this 12th day of MARCH 1962.

[Signature]
Approving officer, Dept. of Highways, Prince George.

McWilliam, Whyte, Serle & Goble
B.C. Land Surveyors - Prince George, B.C.

REF NO G1013-E