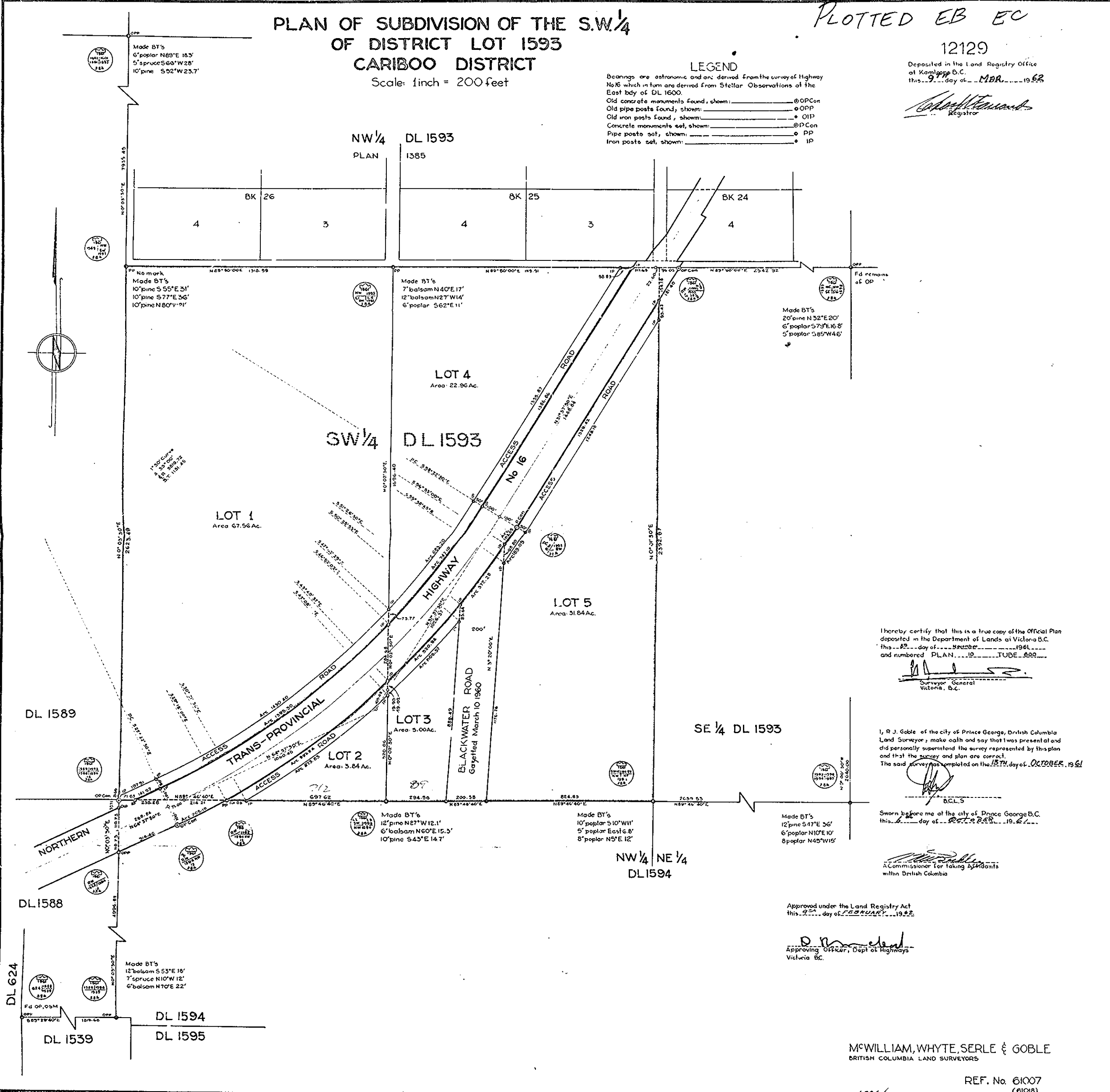


PLAN OF SUBDIVISION OF THE S.W. 1/4
OF DISTRICT LOT 1593
CARIBOO DISTRICT
Scale: 1 inch = 200 feet

PLOTTED EB EC
12129

Deposited in the Land Registry Office
at Kamloops B.C.
this 2... day of... MBR... 1962
[Signature]
Registrar

LEGEND
Bearings are astronomic and are derived from the survey of Highway
No. 16 which in turn are derived from Stellar Observations of the
East bay of DL 1600.
Old concrete monuments found, shown: —●—OPCon
Old pipe posts found, shown: —○—OPP
Old iron posts found, shown: —●—OIP
Concrete monuments set, shown: —●—CPCon
Pipe posts set, shown: —○—CIP
Iron posts set, shown: —●—IP



I hereby certify that this is a true copy of the Official Plan
deposited in the Department of Lands at Victoria B.C.
this 2... day of... 1962...
and numbered PLAN... TUDE... 899...
[Signature]
Surveyor General
Victoria, B.C.

I, R. J. Gable of the city of Prince George, British Columbia
Land Surveyor, make oath and say that I was present and
did personally supervise the survey represented by this plan
and that the survey and plan are correct.
The said survey was completed on the 13th day of OCTOBER, 1961
[Signature]
D.C.L.S.

Sworn before me at the city of Prince George B.C.
this 2... day of... 1962...
[Signature]
A Commissioner for taking Affidavits
within British Columbia

Approved under the Land Registry Act
this 2... day of... 1962...
[Signature]
Approving Officer, Dept of Highways
Victoria B.C.

McWILLIAM, WHYTE, SERLE & GOBLE
BRITISH COLUMBIA LAND SURVEYORS

REF. No. 61007
(61018)

