

D.L. 2099

PLAN OF SUBDIVISION OF PART OF THE WEST 1/2 OF DISTRICT LOT 2101 CARIBOO DISTRICT.

PLAN 11985

Deposited in the District Office at Kamloops, B.C. this 17th day of Dec 1960

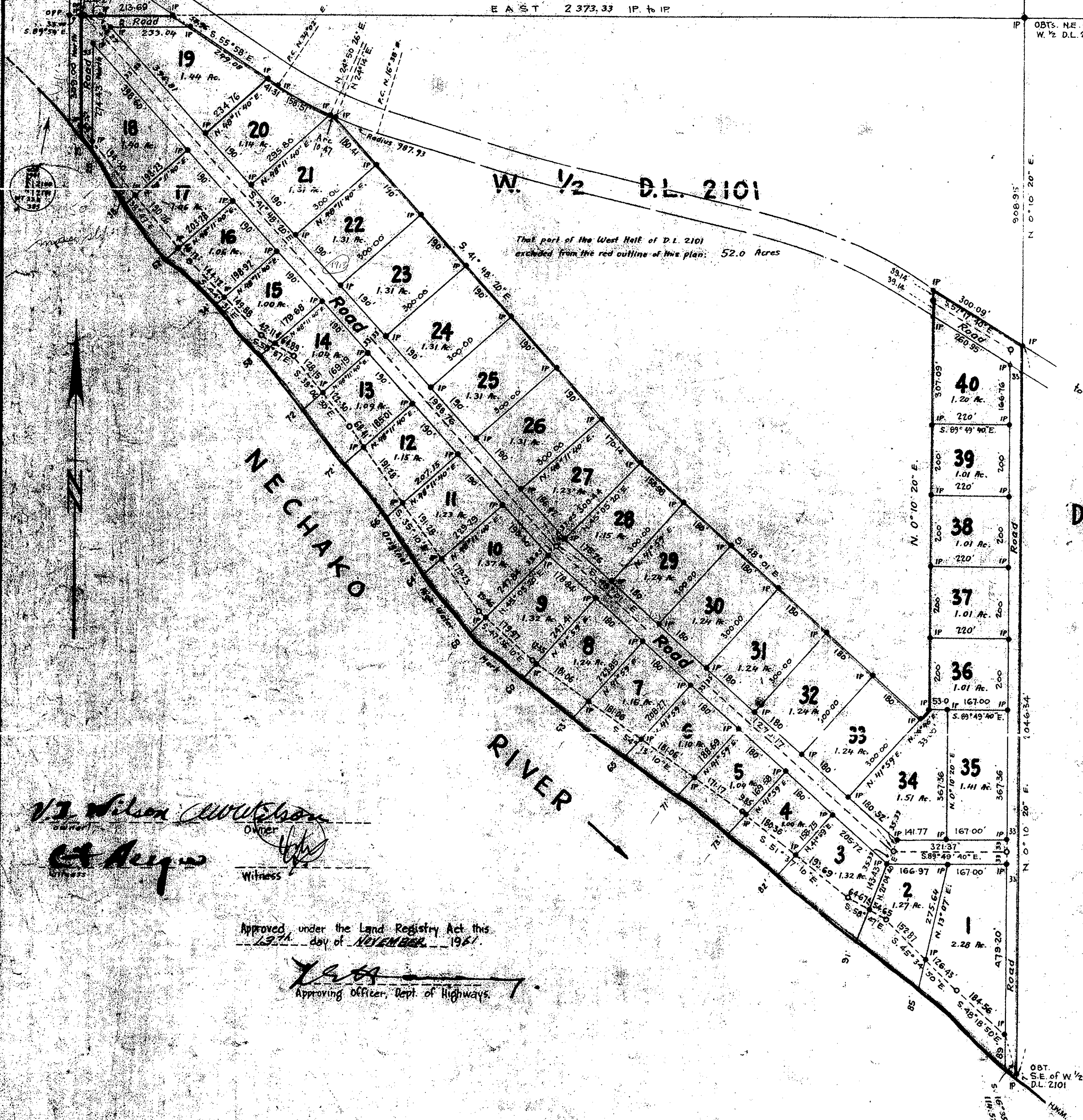
[Signature]

D.L. 2100

(Total distance: 2640.92)
E A S T 2 373.33 IP. to IP

Scale: 1" = 200'
Bearings are astronomic and were derived from the North Boundary of the W. 1/2 of D.L. 2101 as East.
Old wooden posts found shown ○ OP
New iron pins set shown ● IP
Old standard pipe post found shown ● OPP

Lot 1 Plan (177)
D 17° 24'
Pc 6° 00'
R 95° 38'
A.D. 146-12



That part of the West Half of D.L. 2101 excluded from the red outline of this plan: 52.0 Acres

to Prince George
E. 1/2 D.L. 2101

Inspected this 4th day of Nov.

[Signature]
A.C. 2.5

I, R.J. Goble, of the city of Prince George, British Columbia, Land Surveyor, make oath and say that I was present at and personally supervised the survey represented by this plan, and that the plan and survey are correct. The said survey was completed on the 27th day of January 1960.

[Signature]

Sworn before me at the city of Prince George, B.C. this 27th day of January 1960.

A Commissioner for the District of Kamloops within British Columbia

MS William Whyte
B.C. Land Surveyor

[Signature]
Owner
[Signature]
Witness

Approved under the Land Registry Act this 29th day of November 1960

[Signature]
Approving Officer, Dept. of Highways