

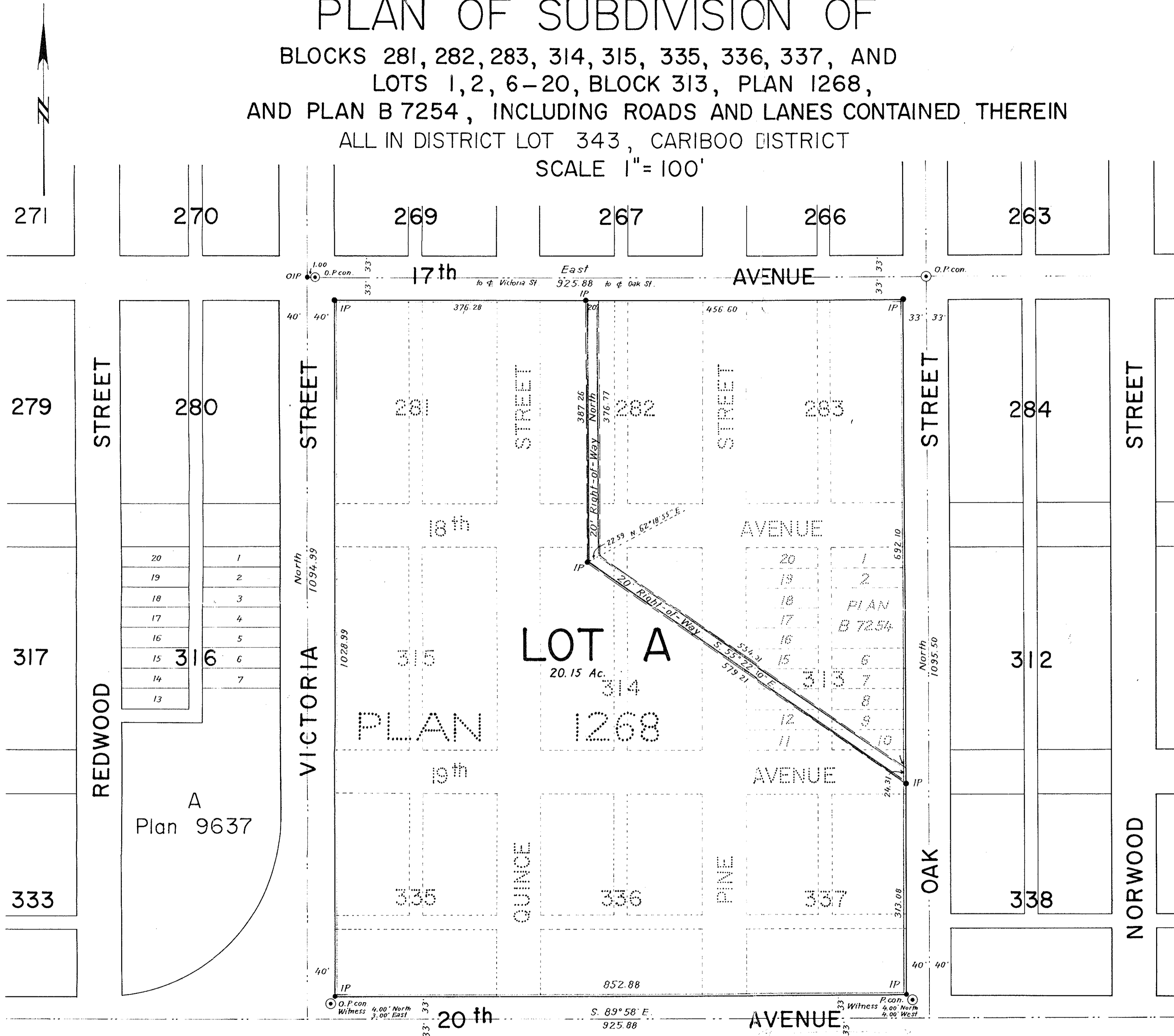
PLAN OF SUBDIVISION OF

BLOCKS 281, 282, 283, 314, 315, 335, 336, 337, AND
 LOTS 1, 2, 6-20, BLOCK 313, PLAN 1268,
 AND PLAN B 7254, INCLUDING ROADS AND LANES CONTAINED THEREIN
 ALL IN DISTRICT LOT 343, CARIBOO DISTRICT
 SCALE 1" = 100'

PLAN 11923

Deposited in the Land Registry Office at Kamloops, B.C.,
 this 22nd day of November 1961.

Chapman
 Registrar



- Legend
- Bearings are astronomic and are derived from centre line 17th Ave. as shown as East on Plans 1268 and M 330
 - Old concrete monuments found shown ● O.P.con.
 - Old iron post found shown ● OIP
 - Concrete monument set shown ● P.con.
 - Iron posts set shown ● IP

I, R.J. Goble, of the city of Prince George, British Columbia Land Surveyor, make oath and say that I was present at and did personally superintend the survey represented by this plan and that the survey and plan are correct. The said survey was completed on the 29th day of November 1960.

R.J. Goble
 B.C.L.S.

Sworn before me at the city of Prince George
 this 29th day of November 1960

James
 A Commissioner for taking affidavits
 within British Columbia

Approved under the Land Registry Act
 this 5th day of Dec 1960

25 AUG 1961
W. J. Goble
 Approving Officer
 City of Prince George, B.C.

P. Range
 CHAIRMAN

Shirley
 SECRETARY - TREASURER

W. Cross
 WITNESS

McWilliam-Whyte-Serle & Goble
 British Columbia Land Surveyors