

# PLAN OF SUBDIVISION OF PART OF DISTRICT LOT 10224 CARIBOO DISTRICT EXCEPT PLAN 11552

PLAN 11808

Deposited in the Land Registry Office at Kamloops B.C.  
this 3<sup>rd</sup> day of October 1961

*[Signature]*  
Registrar

SCALE: 1"=100'

DISTRICT LOT 10231

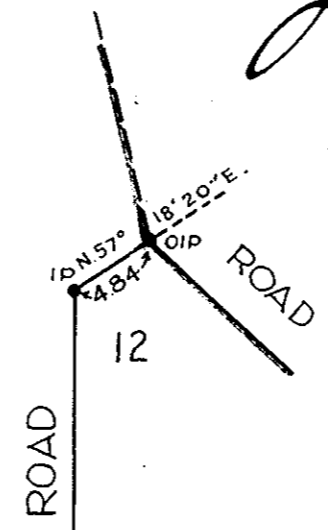
## LEGEND

Bearings are astronomic and are derived from old iron pins on the South boundary of the existing road shown as S. 51° 35' 20" E. on plan 11552

Old standard pipe posts found, shown ● OPP  
Old iron posts found, shown ● OIP  
Iron posts set, shown ● IP

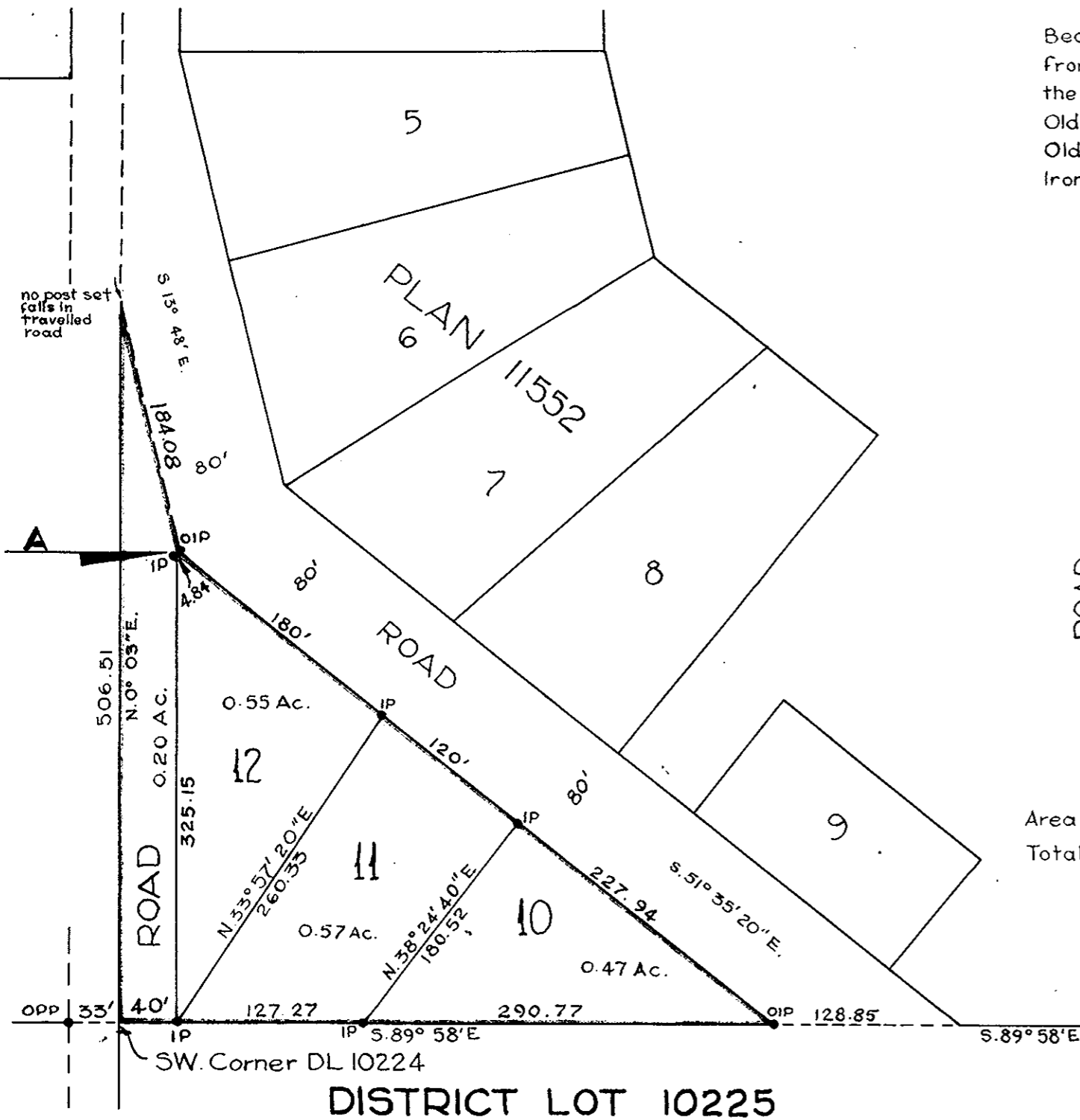
*[Signature]*  
OWNER

*[Signature]*  
WITNESS



DETAIL AT A  
SCALE: 1"=10'

Area of Road dedicated by this plan, 0.20 Ac.  
Total area of residue of D.L. 10224, 68.5 Ac.



I, R.J. Goble, of the city of Prince George, British Columbia Land Surveyor, make oath and say that I was present at and did personally superintend the survey represented by this plan and that the survey and plan are correct.  
The said survey was completed on the 20<sup>th</sup> day of July 1961.

*[Signature]*  
B.C.L.S.

Sworn before me at the city of Prince George, this 2<sup>nd</sup> day of August 1961

*[Signature]*  
A Commissioner for taking affidavits  
within British Columbia

Approved under the Land Registry Act,  
this 28<sup>th</sup> day of JULY 1961.

*[Signature]*  
Approving Officer, Dept. of Highways Prince George B.C.