

NO METRIC BASE
MAP

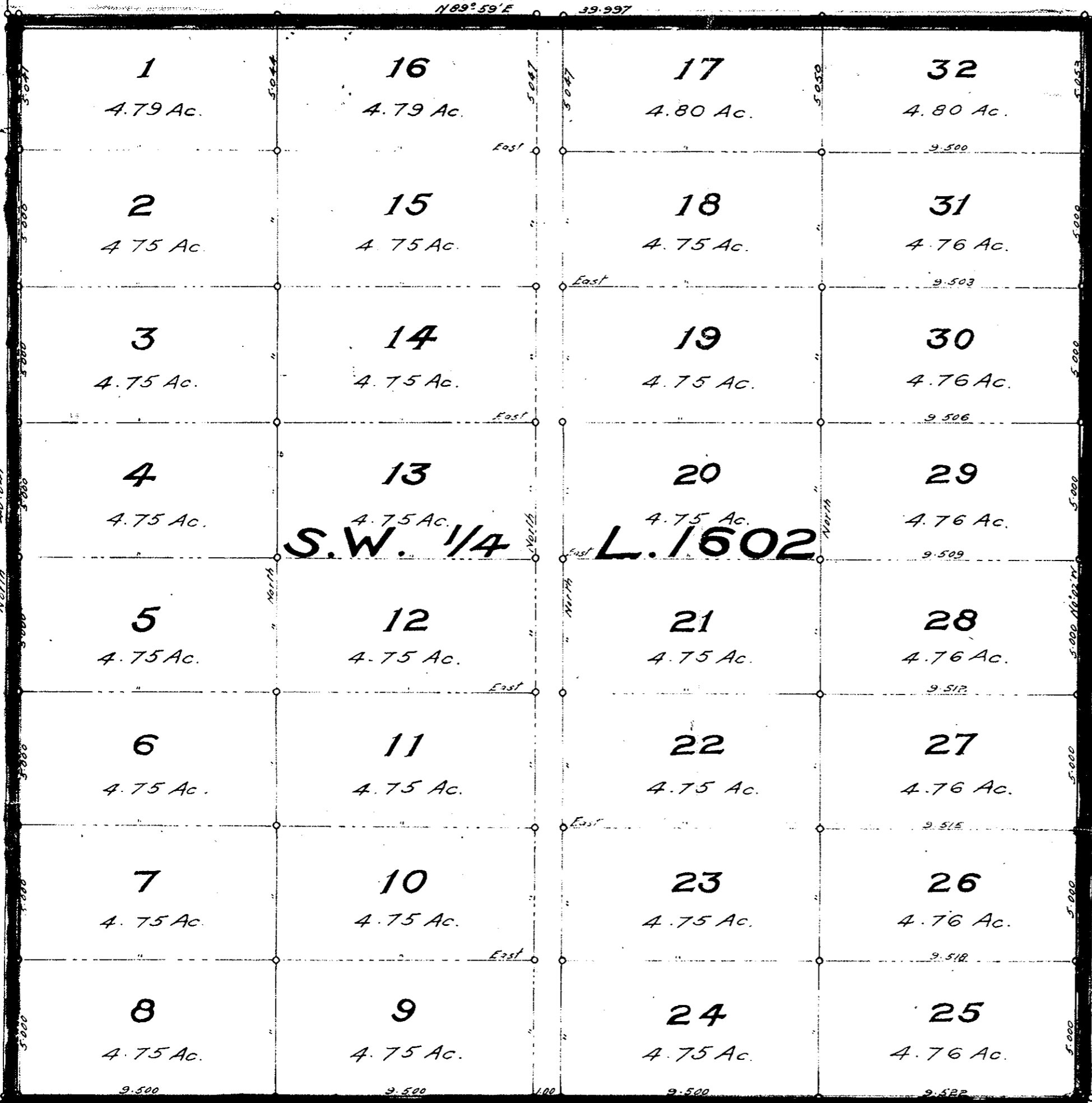
1174

(DF)

Hick 1873
H. Dringham

1189° 59' E 39.997

L. 1603



L. 1591

Witness to signature
Geo. M. Stevens
John
Wheeler

Geo. M. Stevens

SUBDIVISION PLAN

OF

S.W. 1/4 OF LOT 1602.

CARIBOO DISTRICT.

Geo. M. Stevens B.C

Scale: 4 Chains to 1 Inch.

NOTE: The corners of all lots shown on this plan are defined on the ground by 2"x2"x30" wooden posts

I, F.P. Burden of Fort George, B.C., a British Columbia Land Surveyor, make oath and say, that I was present and did personally superintend the survey represented by this plan, and that the said survey and plan are correct, the said survey was completed on the 29th day of November A.D. 1911.

Sworn before me this 19th day of November, A.D. 1912.

F.P. Burden
B.C.L.S.

Frederic J. Shearer