

Plan of Subdivision of Lots 1, 2, 3, 4, 5, and 6,
Block 4, Plan 796, District Lot 932
Cariboo District
Scale 1" = 100'

PLAN 11505

Deposited in the Land Registry Office at Kamloops, B.C.,
this 2nd day of June 1961.

Chapman
Registrar

Lot A
Plan
9637

Victoria St.

O.P. Con to OIP:
South 62.00'
West 11.00'

Wit. 3.00' East
4.00' North

Legend

Bearings are astronomic and are derived from
O.P. con.'s on 20th Ave. as shown on Plan M330.

Old standard concrete post found shown \odot O.P. Con
Old iron post found shown \bullet OIP
Old wooden post found shown \circ OP
Iron post set shown \cdot IP

Witness
4.00' North
4.00' West

Oak St.

D.L. 343
Bk. 338

Norwood St.

Plan 1268
Bk. 339

Maple St.

Robert Gray
owner-trustee
witness *John Smith*

O.P. Con \odot
S 89° 58' E
Total: 1276.43

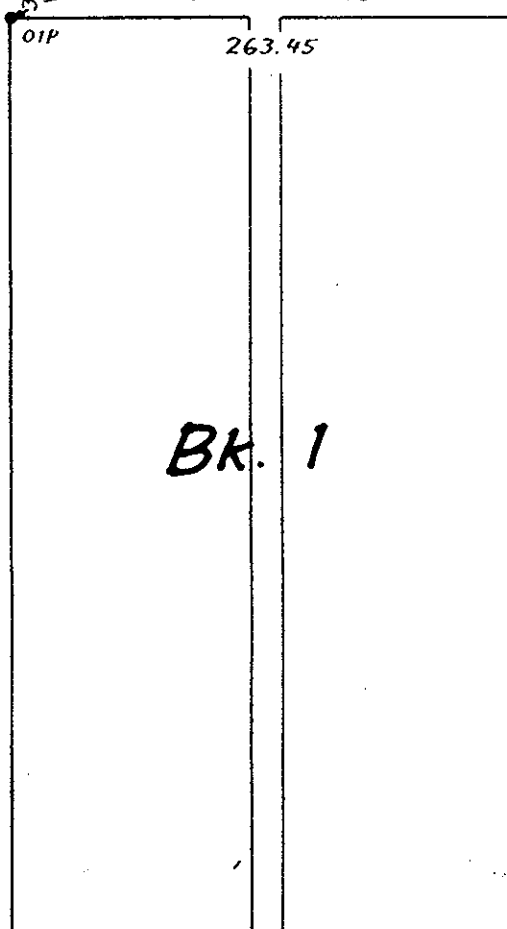
South bdy. D.L. 343
North bdy. D.L. 932

20th Ave.

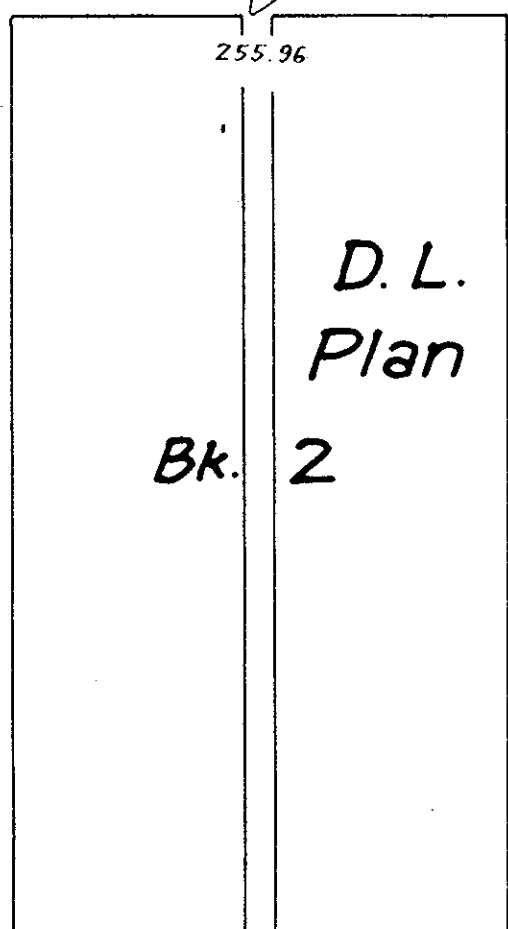
O.P. Con \odot

405.63
S 89° 58' E
Total: 482.51

S 89° 58' E



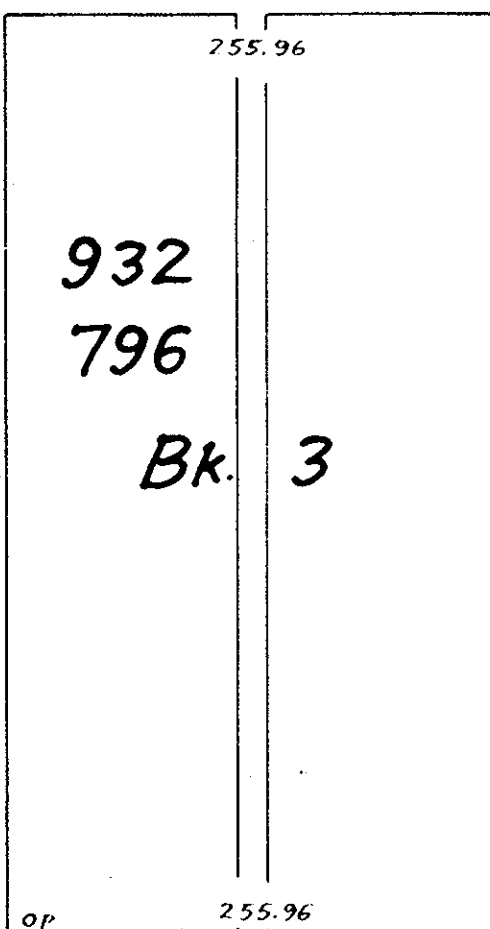
Bk. 1



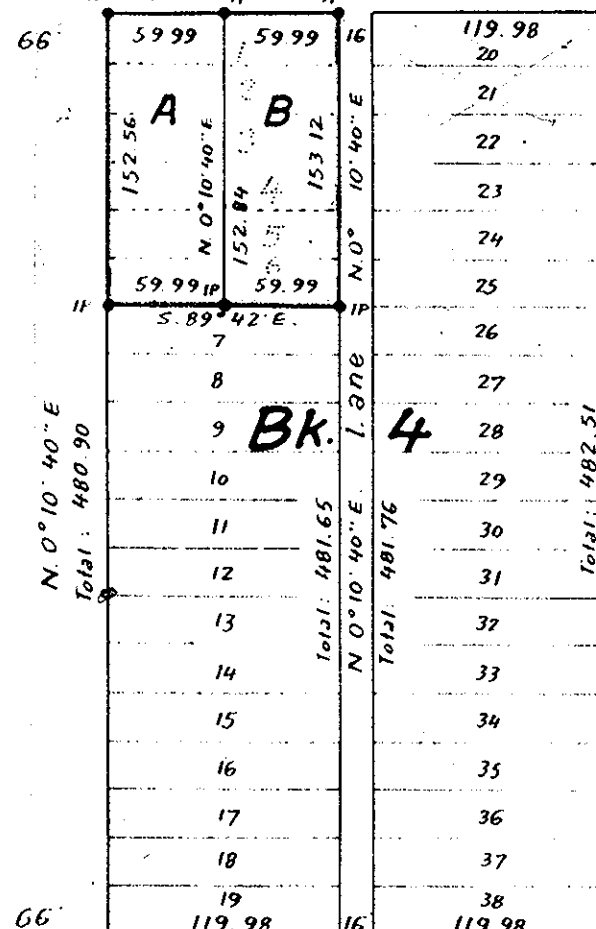
Bk. 2

D.L. Plan 932

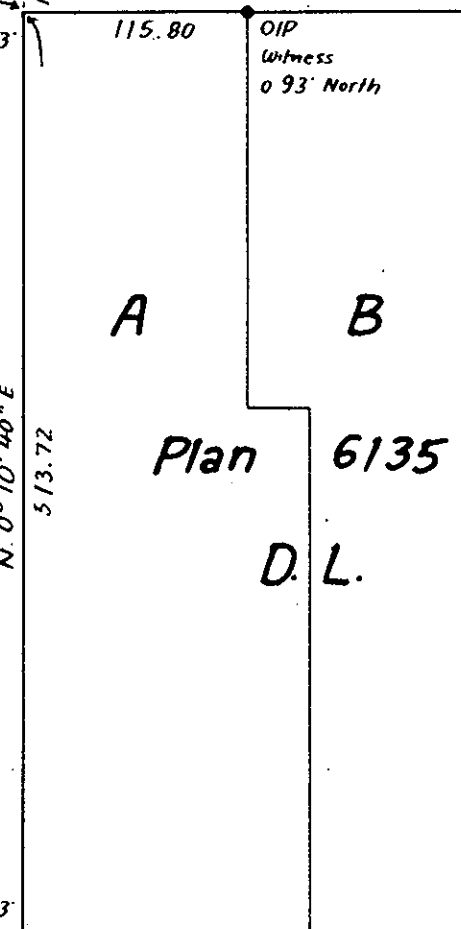
Pine St.



Bk. 3
932
796



S 89° 36' 20" E



Plan 6135

D.L. 931

I, R. J. Goble, of the city of Prince George, British Columbia Land Surveyor, make oath and say that I was present at and did personally superintend the survey represented by this plan and that the survey and plan are correct. The said survey was completed on the 9th day of December 1960.

Inspected
this 17th day of March 1961

B.C.L.S.

Sworn before me at the city of Prince George
this 30th day of January 1961.

William B. Buley
A Commissioner for taking affidavits
within British Columbia

Herbert Schner
owner lots 1, 2, 3 & 4

Edward F. Fliche
Owners lots 5 & 6

Donald A. Burton
witness

Donald A. Burton
witness to both signatures.

Approved under the Land Registry Act
this 12th day of APRIL 1961.

RECORDS

McWilliam
Approving Officer
Dept. of Highways, Prince George, B.C.

Bk. 2
Plan 1810

McWilliam, Whyte, Serle & Goble
British Columbia Land Surveyors

Ref. No. 60198