

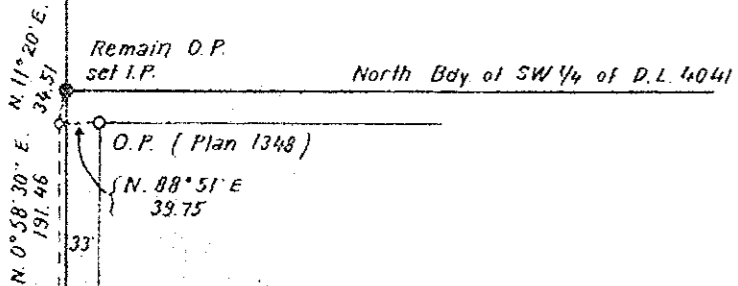
NW 1/4 D.L. 4041

Plan of Subdivision of Part of N 1/2 of SW 1/4 of District Lot 4041 Cariboo District Scale 1" = 200'

PLAN 11475

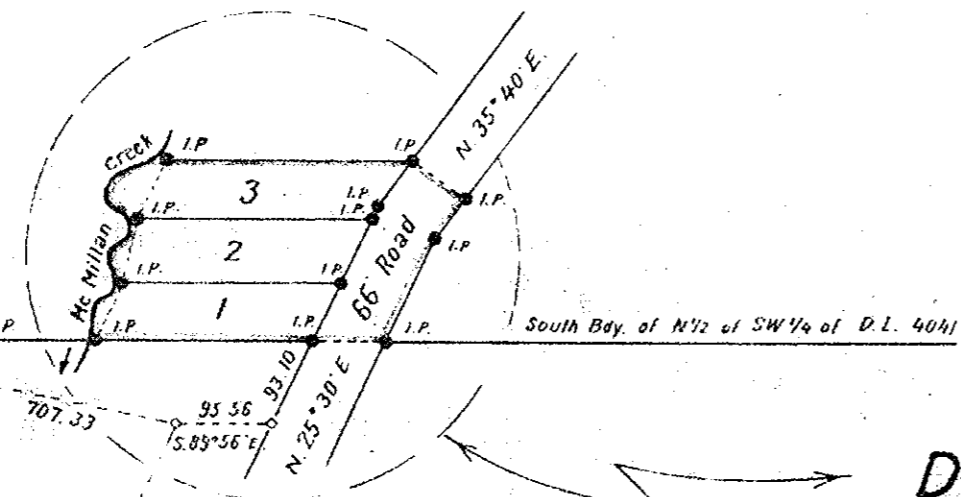
Deposited in the Land Registry Office of Kamloops, B.C.
this 16th day of MAY 1961.

[Signature]
Registrar



Legend
Bearings are astronomic and are derived from
the West Bay of D.L. 4041
Old standard pipe posts found shown ⊙ O.P.P.
Old posts found shown ○ O.P.
Iron posts set shown ● I.P.
Traverse lines and hubs shown ---
Wit. stands for "Witness"
O.B.T. stands for "Old bearing tree"

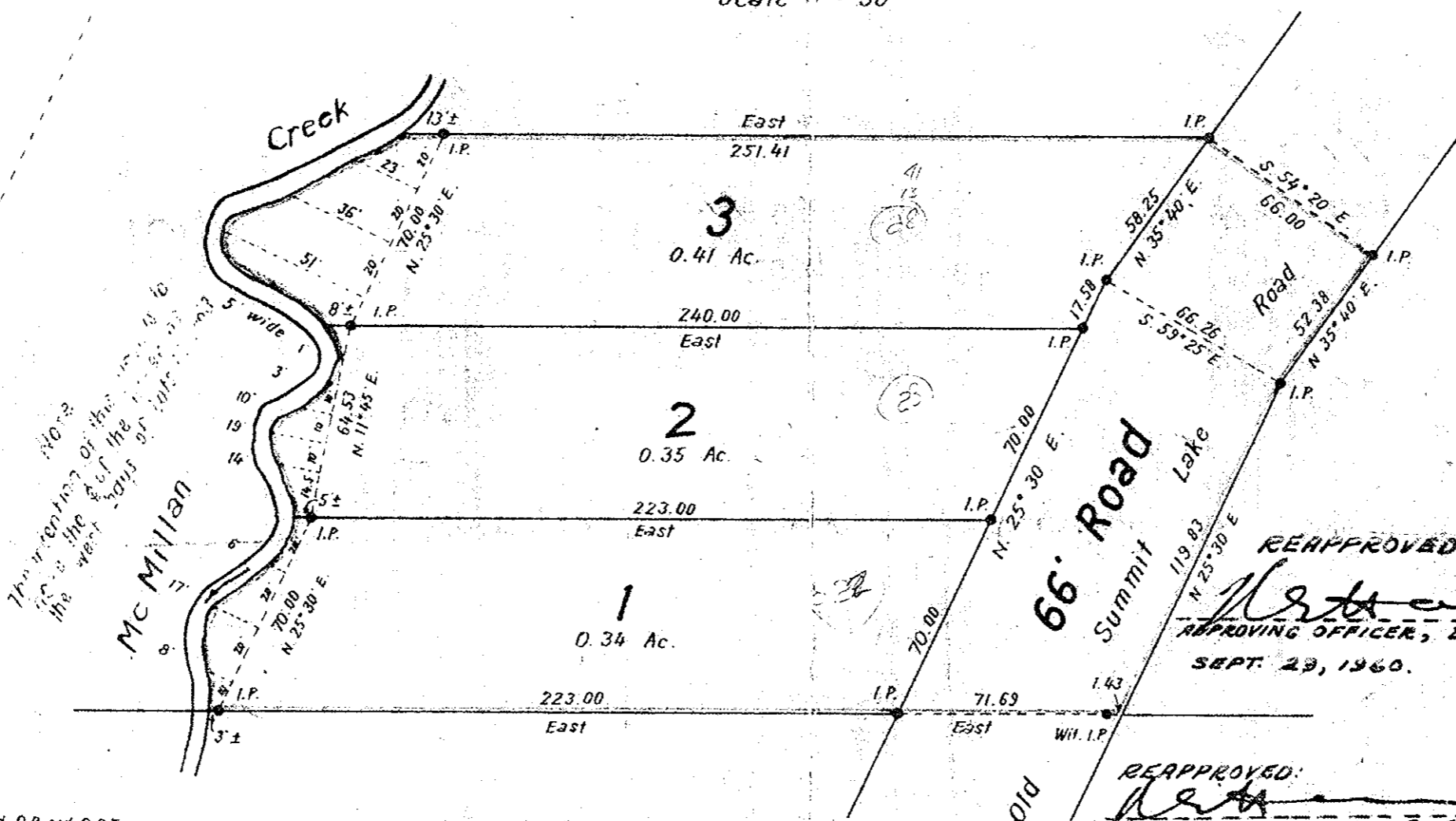
N 1/2 of SW 1/4 of D.L. 4041



Detail
Scale 1" = 50'

D.L.
4040

S 1/2 of SW 1/4 of D.L. 4041



[Signature]
owner

[Signature]
witness

Re-inspected on the 2nd day of April 1960

Inspected on the 28th day of July 1959

[Signature]
R. J. Goble, B.C.L.S.

I, A.W. McWilliam, of the city of Kamloops, British Columbia Land Surveyor,
make oath and say that I was present at and did personally superintend the
survey represented by this plan and that the survey and plan are correct.
The said survey was completed on the 27th day of November 1958.

[Signature]
B.C.L.S.

Sworn before me at the city of Kamloops
this 10th day of August 1959

[Signature]
A Commissioner for taking oaths
within British Columbia

REAPPROVED:
[Signature]
APPROVING OFFICER, DEPT. OF HWYS
SEPT. 29, 1960.

Approved under the Land Registry Act
this 3rd day of JUNE 1960

[Signature]
Approving Officer
Dept. of Highways, Victoria, B.C.

REAPPROVED:
[Signature]
APPROVING OFFICER, DEPT. OF HWYS
MARCH 9, 1961.

McWilliam - Whyte - Serle & Goble
British Columbia Land Surveyors

(Kamloops Job No. 57-71,
F.B. 64; p. 15-20, 24, 25)

D.L. 7645

Ref. No. 58141

