

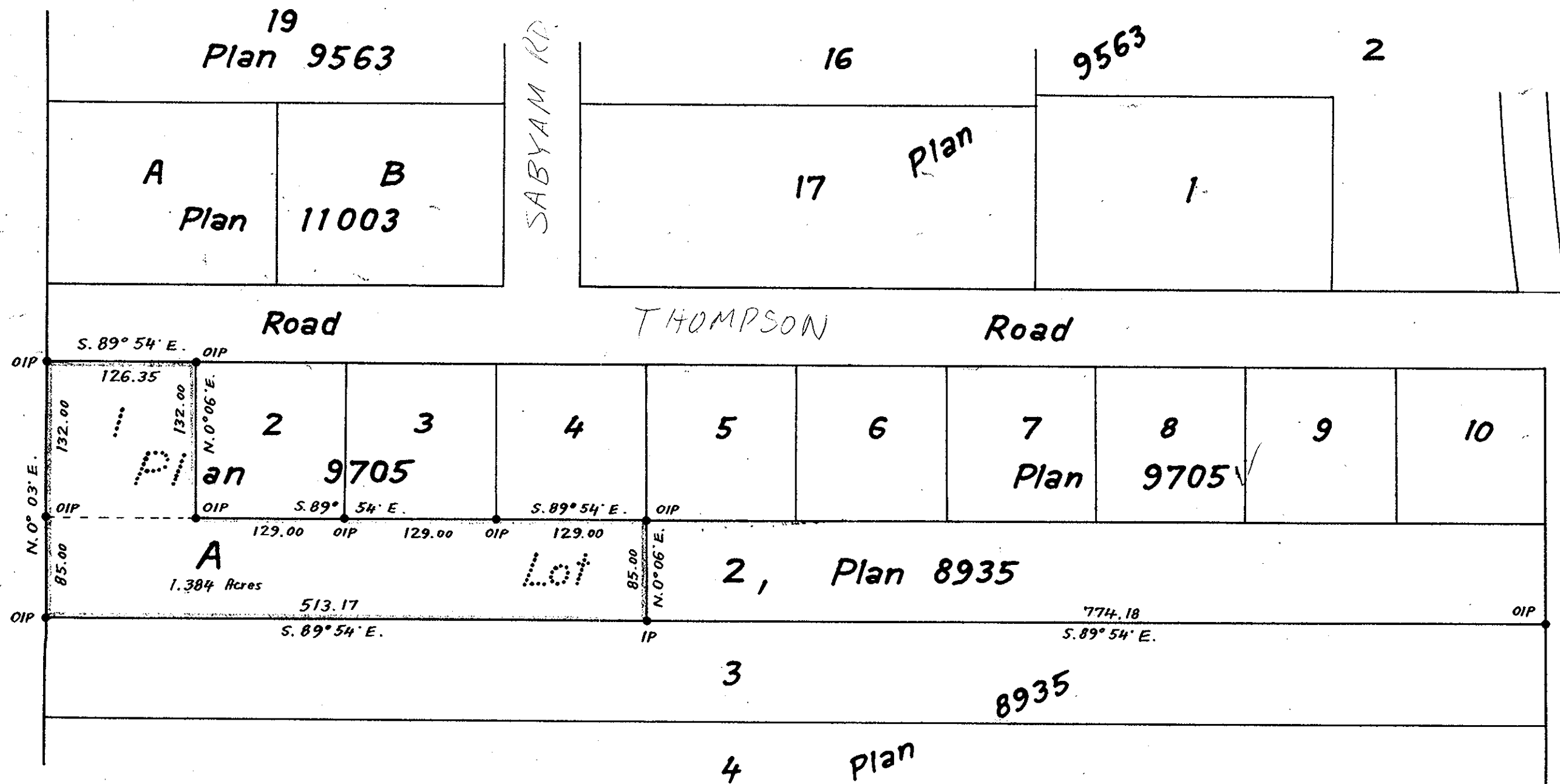
Plan of Subdivision of Lot 1, Plan 9705,
and Part of Lot 2, Plan 8935,
District Lot 2424, Cariboo District
Scale 1" = 100'

11436
PLAN 11436
Deposited in the Land Registry Office at Kamloops, B.C.,
this 4th day of MAY 1961.

Charles Stewart
Registrar

Legend
Bearings are astronomic and are derived from
the North bdy. Lot 2, Plan 8935.
Old iron post found shown ● OIP
Iron post set shown ● IP

West 1/2 of the S.E. 1/4 of D.L. 2424



I, R.J. Goble, of the city of Prince George, British Columbia Land Surveyor,
make oath and say that I was present at and did personally superintend the
survey represented by this plan, and that the survey and plan are correct.
The said survey was completed on the 26th day of January 1961.

Sworn before me at the city of Prince George
this 31 day of January 1961.

W. B. Bley
A Commissioner for taking affidavits
within British Columbia

Gene Brin
Adèle Horteau
L. Horteau
owners

Approved under the Land Registry Act
this 29th day of FEBRUARY 1961.

Admuns
witness

W. B. Bley
Approving Officer
Dept. of Highways, Prince George, B.C.

SACRED NEARBY UNION
per: *H. B. Bland* PRES
W. B. Bley TRES.
witness

McWilliam, Whyte, Serle & Goble
British Columbia Land Surveyors