

# PLAN OF SUBDIVISION OF PART OF N.W. 1/4 L. 2433 - CARIBOO DISTRICT BRITISH COLUMBIA

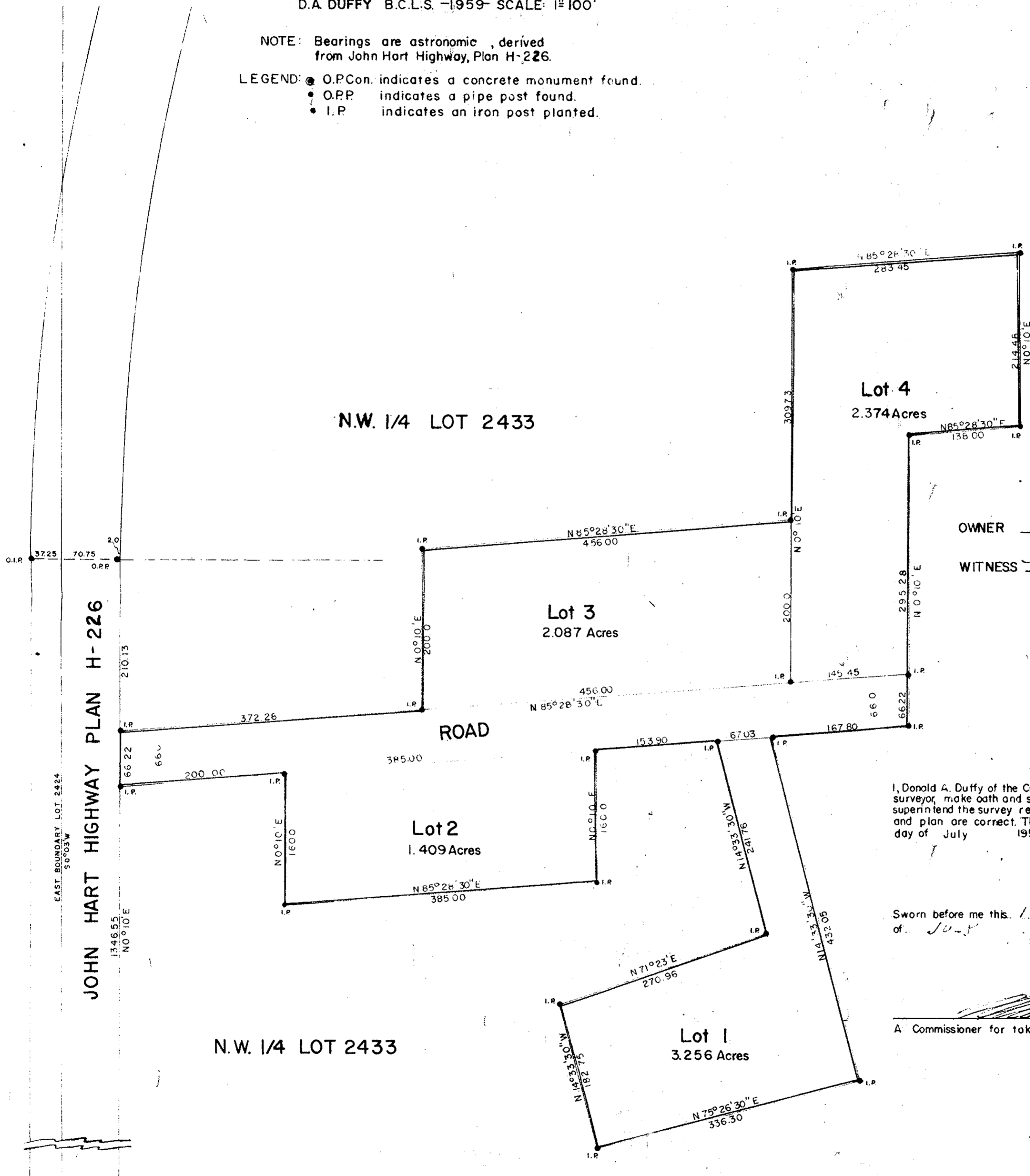
D.A. DUFFY B.C.L.S. -1959- SCALE: 1"=100'

NOTE: Bearings are astronomic, derived from John Hart Highway, Plan H-226.

LEGEND: ● O.P. Con. indicates a concrete monument found.  
○ O.P.P. indicates a pipe post found.  
• I.P. indicates an iron post planted.

Plan No. **11254**  
Deposited in the Land Registry  
Office at Kamloops this 17th  
day of Feb 1961.

*[Signature]*  
REGISTRAR



OWNER *[Signature]*  
WITNESS *[Signature]*

I, Donald A. Duffy of the City of Prince George, British Columbia land surveyor, make oath and say that I was present at and did personally supervise the survey represented by this plan and that the survey and plan are correct. The said survey was completed on the eighth day of July 1959.

Sworn before me this 16 day of July 1959. *[Signature]*  
B.C.L.S.

*[Signature]*  
A Commissioner for taking Affidavits within the Province of British Columbia.

Approved under the Land Registry Act  
this 22 day of NOVEMBER 1960.

*[Signature]*  
Approving Officer Dept. of H'wys.

30' 40.55 69.45 O.P. CON.

JOHN HART HIGHWAY PLAN H-226

EAST BOUNDARY LOT 2424 90°03'W