

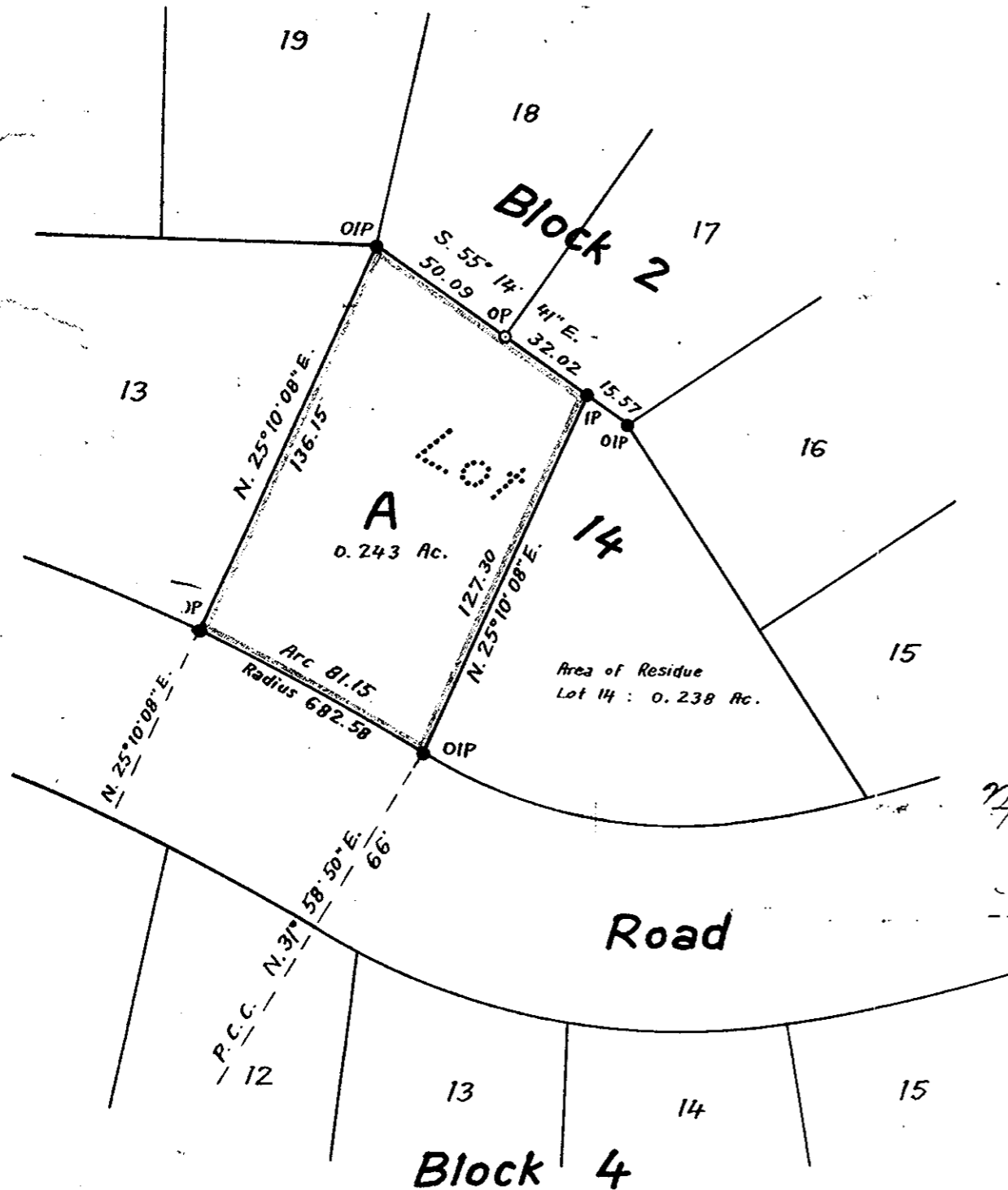
# Plan of Subdivision of Part of Lot 14, Block 2, Plan 10434, District Lot 753, Cariboo District

Scale 1" = 50'

### Legend

Bearings are astronomic and are derived  
from Plan 10434.

- Old iron posts found shown ● OIP
- Old wooden posts found shown ○ OP
- Iron posts set shown ● IP



11231  
**PLAN 11231**

Deposited in the Land Registry Office at Kamloops, B.C.  
this 27<sup>th</sup> day of January 1961.

*[Signature]*  
Registrar

I, R. J. Goble, of the city of Prince George, British Columbia Land Surveyor,  
make oath and say that I was present at and did personally superintend the  
survey represented by this plan and that the survey and plan are correct.  
The said survey was completed on the 30<sup>th</sup> day of November 1960.

*[Signature]*

B. C. L. S.

Sworn before me at the city of Prince George  
this 12<sup>th</sup> day of DECEMBER 1960.

*[Signature]*  
A Commissioner for taking affidavits  
within British Columbia

*[Signature]*  
owner

Approved under the Land Registry Act  
this 23<sup>rd</sup> day of December 1960.

*[Signature]*  
witness

*[Signature]*  
Approving Officer  
Dept. of Highways, Victoria, B.C.

McWilliam - Whyte - Serle & Goble  
British Columbia Land Surveyors